

Excellent Integrated System Limited

Stocking Distributor

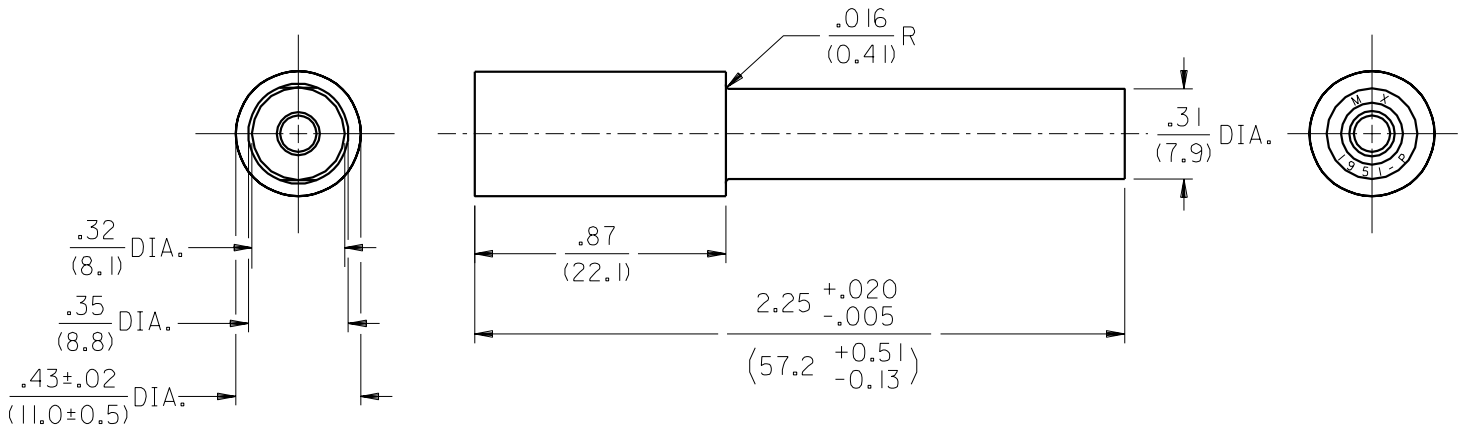
Click to view price, real time Inventory, Delivery & Lifecycle Information:

[Molex Connector Corporation](#)

[03-09-2014](#)

For any questions, you can email us directly:

sales@integrated-circuit.com



NOTES:

1. MATERIAL: NYLON 6/6, U.L. 94V-2
2. HOUSINGS FOR USE WITH MOLEX .093/(2.36) SERIES PIN AND SOCKET TERMINALS.
3. PART MATES TO 195 I-R (03-09-1014).

				DIMENSIONS SHOWN (METRIC) INCH		▽ = 0 ▼ = 0		REVISE ONLY ON CAD SYSTEM	
				UNLESS OTHERWISE SPECIFIED TOLERANCES: ANGULAR ± 1/2°		TITLE			
				INCH METRIC		.093/(2.36) SERIES PLUG HOUSING, 1 CIRCUIT			
				3 PLACE ± .01 ---		MOLEX MOLEX INCORPORATED		SHEET NO. DATE	
				2 PLACE ± .014 ± 0.25		LISLE,ILL. 60532 U.S.A.		1 1/30/96	
				1 PLACE --- ± 0.35		PART NO. DRWG. NO.			
		K2		DRAFT WHERE APPLICABLE MUST REMAIN WITHIN DIMENSIONS		03-09-2014		SD-195 I-P	
		REDRAWN ON CAD ECR U60881 CM 1/30/96 RW		DRWG. BY CM CHK'D. BY RW		FILE NAME		THIS DRAWING CONTAINS INFORMATION THAT IS PROPRIETARY TO MOLEX INC. AND SHOULD NOT BE USED WITHOUT WRITTEN PERMISSION.	
LTR.		REVISIONS		APP'D. BY RAS SCALE 2 : 1		S195 IPX1 DGN		DIV. SIZE CP A	
6		5		4		3		2 NO P.S. 1	