

Excellent Integrated System Limited

Stocking Distributor

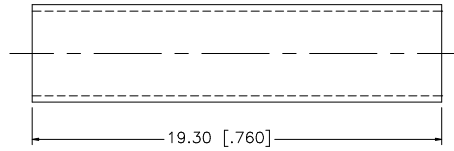
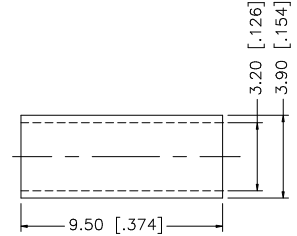
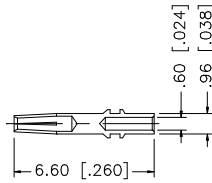
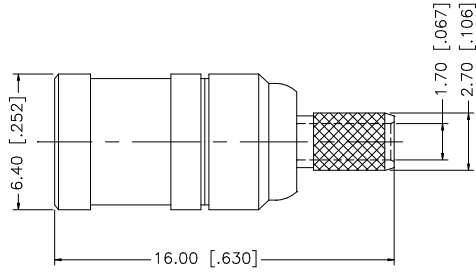
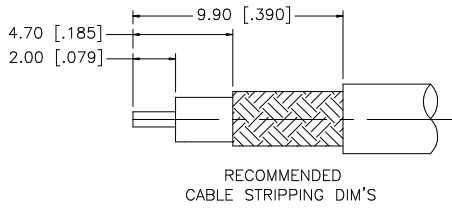
Click to view price, real time Inventory, Delivery & Lifecycle Information:

[Amphenol RF](#)
[142178](#)

For any questions, you can email us directly:

sales@integrated-circuit.com

REV.	DATE	DESCRIPTION
A	04/31/03	UPDATE DRAWING FORMAT
B	05/02/07	REVISE BARREL AND FERRULE DIMENSIONS



NOTE:

1. CRIMPED FERRULE HEX CRIMP SIZE .128"
2. CONTACT PIN TO SOLDER.

8				<small>UNLESS OTHERWISE SPECIFIED DIMENSIONS ARE IN MILLIMETERS. DIMENSIONS IN [] ARE IN INCHES AND FOR CUSTOMER REFERENCE ONLY.</small> <small>UNLESS OTHERWISE SPECIFIED TOLERANCES FOR MILLIMETERS ARE:</small> 0.5 - 8mm ± 0.20mm 8 - 30mm ± 0.40mm 30 - 120mm ± 0.50mm <small>UNLESS OTHERWISE SPECIFIED TOLERANCES FOR INCHES ARE:</small> .020 - .315 = ± 0.007" .315 - 1.180 = ± 0.015" 1.180 - 4.724 = ± 0.020" DO NOT SCALE DRAWING	APPROVALS	DATE	<h1 style="color: blue;">Amphenol Connex</h1> <p>SMB CRIMP PLUG (FOR RG-174/U, 188A/U, 316/U)</p> <p>142178</p>	
7					DRAWN	G.R.S.		05/02/07
6					CHECKED			
5	HEAT SHRINK TUBE	BLACK	1		ISSUED			
4	FERRULE	COPPER	NICKEL		1			
3	CONTACT PIN	BER. COPPER	GOLD		1			
2	INSULATOR	TEFLON	NATURAL		1			
1	BODY	BRASS	NICKEL		1			
	DESCRIPTION	MATERIAL	FINISH	QTY	CAD FILE	DWG. NO.	REV. B SIZE A SCALE NA	
					C:/142/142178.DWG	142178.DWG		