

Excellent Integrated System Limited

Stocking Distributor

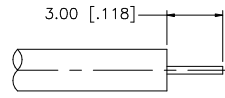
Click to view price, real time Inventory, Delivery & Lifecycle Information:

[Amphenol RF](#)
[132249](#)

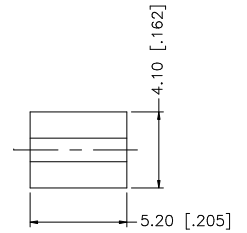
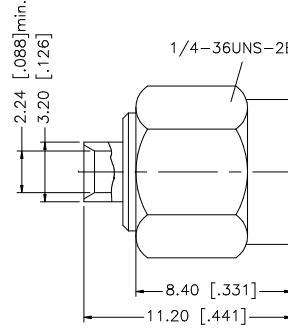
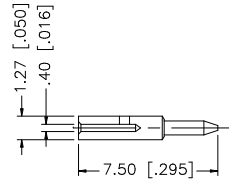
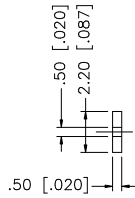
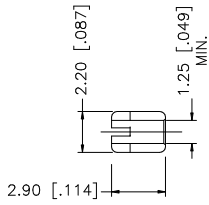
For any questions, you can email us directly:

sales@integrated-circuit.com

| REV. | DATE | DESCRIPTION |
|------|----------|-----------------------|
| A | 04/31/03 | UPDATE DRAWING FORMAT |



RECOMMENDED
CABLE STRIPPING DIM'S



| REV. | DATE | DESCRIPTION |
|------|----------|-----------------------|
| A | 04/31/03 | UPDATE DRAWING FORMAT |

| | | | | | | | | | |
|---|---------------|----------|---------|---|-------------------|--|---|------|-------|
| 8 | | | | <small>UNLESS OTHERWISE SPECIFIED DIMENSIONS ARE IN MILLIMETERS. DIMENSIONS IN [] ARE IN INCHES AND FOR CUSTOMER REFERENCE ONLY.</small> <small>UNLESS OTHERWISE SPECIFIED TOLERANCES FOR MILLIMETERS ARE:</small> 0.5 - 8mm ± 0.20mm 8 - 30mm ± 0.40mm 30 - 120mm ± 0.50mm <small>UNLESS OTHERWISE SPECIFIED TOLERANCES FOR INCHES ARE:</small> .020 - .315 = ± 0.007" .315 - 1.180 = ± 0.015" 1.180 - 4.724 = ± 0.020" | APPROVALS | DATE | <h1 style="color: blue;">Amphenol Connex</h1> | | |
| 7 | | | DRAWN | | G.R.S. | 04/31/03 | | | |
| 6 | | | CHECKED | | | | | | |
| 5 | | | ISSUED | | | | | | |
| 4 | SOLDER BARREL | BRASS | GOLD | | 1 | PART DESCRIPTION | | | |
| 3 | CONTACT PIN | BRASS | GOLD | | 1 | SMA DIRECT SOLDER PLUG (FOR .047" SEMI-RIGID CABLE) | | | |
| 2 | INSULATOR | TEFLON | NATURAL | | 1 | PART NO. | | | |
| 1 | BODY | BRASS | GOLD | | 1 | 132249 | | | |
| | DESCRIPTION | MATERIAL | FINISH | QTY | CAD FILE | DWG. NO. | REV. | SIZE | SCALE |
| | | | | DO NOT SCALE DRAWING | C:/132/132249.DWG | 132249.DWG | A | A | NA |