

Excellent Integrated System Limited

Stocking Distributor

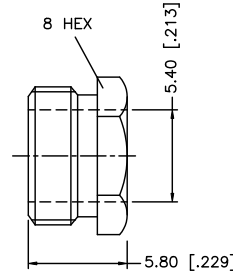
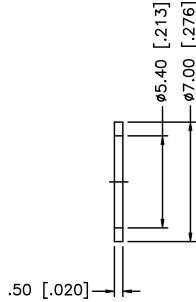
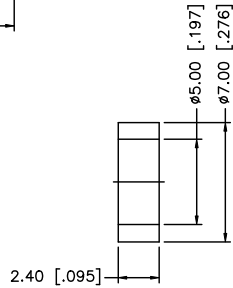
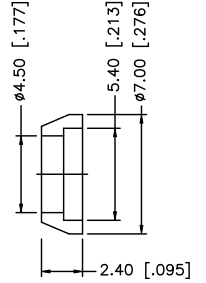
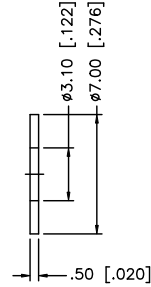
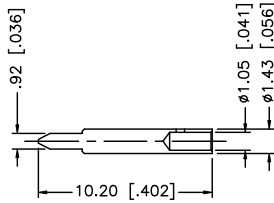
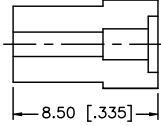
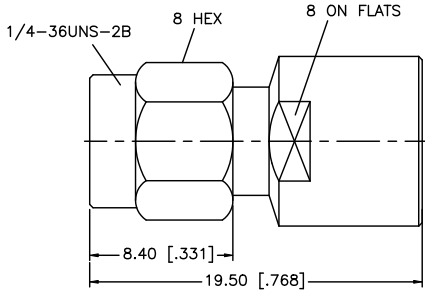
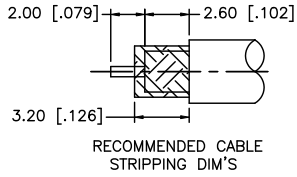
Click to view price, real time Inventory, Delivery & Lifecycle Information:

[Amphenol RF](#)
[132125](#)

For any questions, you can email us directly:

sales@integrated-circuit.com

REV.	DATE	ECR NO.	DESCRIPTION
NC	08/22/08	-	INITIAL RELEASE



DESCRIPTION	MATERIAL	FINISH	QTY	DO NOT SCALE DRAWING	APPROVALS	DATE	Amphenol Connex			
9	HEX NUT	BRASS	GOLD	1				PART DESCRIPTION SMA CLAMP PLUG PART NO. 132125 DWG. NO. 132125.DWG		
8	WASHER	BRASS	GOLD	1						
7	GASKET	SILICONE	RED	1	DRAWN	GRS 08/22/08				
6	TOP HAT	BRASS	GOLD	1	CHECKED					
5	WASHER	BRASS	GOLD	1	ISSUED					
4	CONTACT PIN	BRASS	GOLD	1	SHEET	1 OF 1				
3	INSULATOR	PTFE	NATURAL	1						
2	BODY	BRASS	GOLD	1						
1	SHELL	BRASS	GOLD	1						
<small>UNLESS OTHERWISE SPECIFIED DIMENSIONS ARE IN MILLIMETERS. DIMENSIONS IN [] ARE IN INCHES AND FOR CUSTOMER REFERENCE ONLY.</small> <small>UNLESS OTHERWISE SPECIFIED TOLERANCES FOR MILLIMETERS ARE:</small> 0.5 - 8mm ± 0.20mm 8 - 30mm ± 0.50mm 30 - 120mm ± 0.50mm <small>UNLESS OTHERWISE SPECIFIED TOLERANCES FOR INCHES ARE:</small> .020 - .315 = ± 0.007" .315 - 1.180 = ± 0.015" 1.180 - 4.724 = ± 0.020" CAD FILE C:/132/132125.DWG					REV.	NC	SIZE	A	SCALE	NA