

Excellent Integrated System Limited

Stocking Distributor

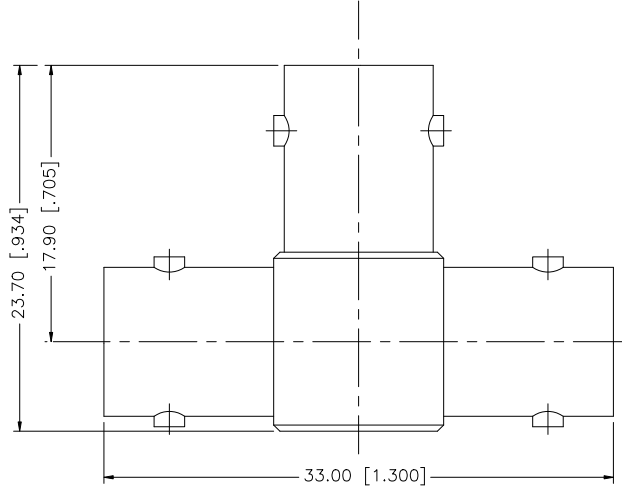
Click to view price, real time Inventory, Delivery & Lifecycle Information:

[Amphenol RF](#)
[112456](#)

For any questions, you can email us directly:

sales@integrated-circuit.com

REV.	DATE	DESCRIPTION
NC	12/11/07	INITIAL RELEASE



				UNLESS OTHERWISE SPECIFIED DIMENSIONS ARE IN MILLIMETERS. DIMENSIONS IN [] ARE IN INCHES AND FOR CUSTOMER REFERENCE ONLY.	APPROVALS	DATE	Amphenol Connex
8					DRAWN	G.R.S.	
7					CHECKED		PART DESCRIPTION
6					ISSUED		BNC JACK, JACK, JACK TEE ADAPTER
5					SHEET	1 OF 1	75 ohm
4							PART NO.
3	CONTACT PIN	PHOS. BRONZE	GOLD	2			112456
2	INSULATOR	DELIN	NATURAL	1			DWG. NO.
1	BODY	BRASS	NICKEL	1			112456.DWG
	DESCRIPTION	MATERIAL	FINISH	QTY	DO NOT SCALE DRAWING	CAD FILE	REV.
						C:/112/112456.DWG	NC
							SIZE
							A
							SCALE
							NA

UNLESS OTHERWISE SPECIFIED DIMENSIONS ARE IN MILLIMETERS. DIMENSIONS IN [] ARE IN INCHES AND FOR CUSTOMER REFERENCE ONLY.

UNLESS OTHERWISE SPECIFIED TOLERANCES FOR MILLIMETERS ARE:
 0.5 - 8mm ± 0.20mm
 8 - 30mm ± 0.40mm
 30 - 120mm ± 0.50mm

UNLESS OTHERWISE SPECIFIED TOLERANCES FOR INCHES ARE:
 .020 - .315 = ± 0.007"
 .315 - 1.180 = ± 0.015"
 1.180 - 4.724 = ± 0.020"

DO NOT SCALE DRAWING

Amphenol Connex

BNC JACK, JACK, JACK TEE ADAPTER
75 ohm

112456

112456.DWG

REV. NC

SIZE A

SCALE NA