

Excellent Integrated System Limited

Stocking Distributor

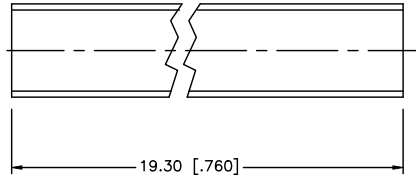
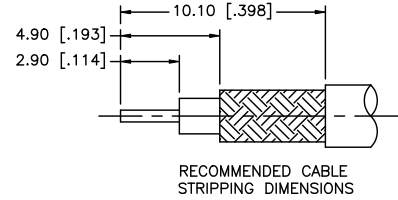
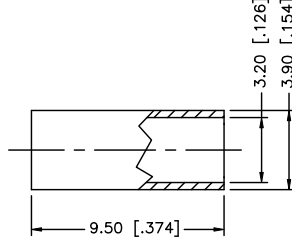
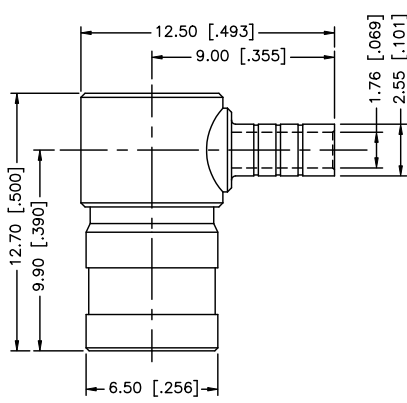
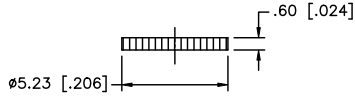
Click to view price, real time Inventory, Delivery & Lifecycle Information:

[Amphenol RF](#)
[142193](#)

For any questions, you can email us directly:

sales@integrated-circuit.com

| REV. | DATE | ECR NO. | DESCRIPTION |
|------|----------|---------|---|
| A | 01/30/04 | - | UPDATE PART DIMENSIONS / DRAWING FORMAT |
| B | 05/08/07 | - | REVISE BARREL, FERRULE DIMENSIONS |
| C | 03/16/08 | - | REVISE FERRULE AND RECOMMENDED CRIMP DIMENSIONS |
| D | 11/13/08 | - | REVISE FERRULE DIAMETERS TO 3.20 I.D. , 3.90 O.D. |



NOTE:
 1. CRIMPED FERRULE HEX CRIMP SIZE .128"
 2. CONTACT PIN TO SOLDER

| DESCRIPTION | MATERIAL | FINISH | QTY | UNLESS OTHERWISE SPECIFIED DIMENSIONS ARE IN MILLIMETERS. DIMENSIONS IN [] ARE IN INCHES AND FOR CUSTOMER REFERENCE ONLY. | APPROVALS | DATE | Amphenol Connex |
|-------------|------------------|-------------|---------|--|----------------------------|----------|------------------------|
| 8 | | | | | | | |
| 7 | HEAT SHRINK TUBE | | 1 | | DRAWN G.R.S. | 11/13/08 | |
| 6 | COVER | BRASS | NICKEL | 1 | | | PART NO. 142193 |
| 5 | FERRULE | COPPER | NICKEL | 1 | | | |
| 4 | CONTACT PIN | BER. COPPER | GOLD | 1 | | | DWG. NO. 142193.DWG |
| 3 | INSULATOR | TEFLON | NATURAL | 1 | | | |
| 2 | BODY | BRASS | NICKEL | 1 | | | REV. D SIZE A SCALE NA |
| 1 | HOUSING | DIE CAST | NICKEL | 1 | | | |
| | | | | UNLESS OTHERWISE SPECIFIED TOLERANCES FOR MILLIMETERS ARE: 0.5 - 8mm ± 0.20mm 8 - 30mm ± 0.40mm 30 - 120mm ± 0.50mm UNLESS OTHERWISE SPECIFIED TOLERANCES FOR INCHES ARE: .020 - .315 = ± 0.007" .315 - 1.180 = ± 0.015" 1.180 - 4.724 = ± 0.020" | | | |
| | | | | DO NOT SCALE DRAWING | CAD FILE C:/142/142193.DWG | | |