

Excellent Integrated System Limited

Stocking Distributor

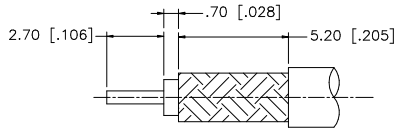
Click to view price, real time Inventory, Delivery & Lifecycle Information:

[Amphenol RF](#)
[252100](#)

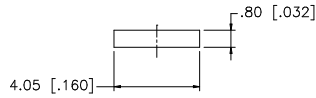
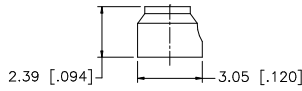
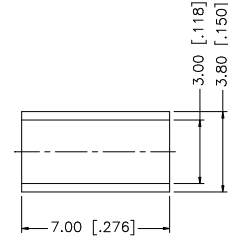
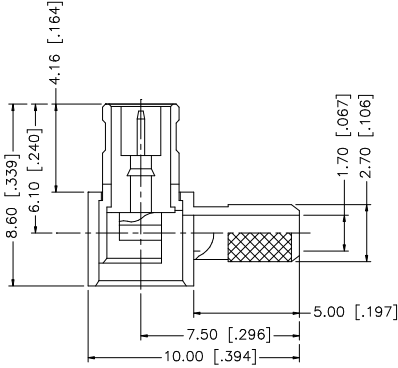
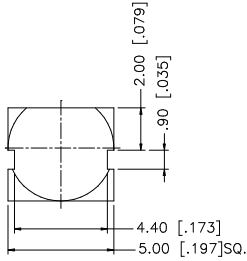
For any questions, you can email us directly:

sales@integrated-circuit.com

| REV. | DATE | DESCRIPTION |
|------|----------|---|
| A | 04/31/03 | UPDATE DRAWING FORMAT |
| B | 10/19/06 | REVISE PLATING TO NICKEL (BODY, COVER, FERRULE) |
| C | 11/13/06 | MODIFY BARREL O.D. TO 2.7mm |



RECOMMENDED
CABLE STRIPPING DIM'S



NOTE:

1. CRIMPED FERRULE HEX CRIMP SIZE .128"
2. CONTACT PIN TO SOLDER

| | | | | UNLESS OTHERWISE SPECIFIED DIMENSIONS ARE IN MILLIMETERS DIMENSIONS IN [] ARE IN INCHES AND FOR CUSTOMER REFERENCE ONLY. | APPROVALS | DATE | Amphenol Connex | |
|---|-------------|----------|---------|--|-----------|----------------------|------------------------|---------------------------|
| 8 | | | | UNLESS OTHERWISE SPECIFIED TOLERANCES FOR MILLIMETERS ARE: 0.5 - 8mm ± 0.20mm 8 - 30mm ± 0.40mm 30 - 120mm ± 0.50mm UNLESS OTHERWISE SPECIFIED TOLERANCES FOR INCHES ARE: .020 - .315 = ± 0.007" .315 - 1.180 = ± 0.015" 1.180 - 4.724 = ± 0.020" | DRAWN | G.R.S. | | 11/13/06 |
| 7 | | | | | CHECKED | | | |
| 6 | FERRULE | COPPER | NICKEL | | 1 | ISSUED | | PART NO. 252100 |
| 5 | COVER | BRASS | NICKEL | | 1 | SHEET | 1 OF 1 | |
| 4 | INSULATOR | DELTRIN | NATURAL | | 1 | CAD FILE | C:/252/252100.DWG | DWG. NO. 252100.DWG |
| 3 | CONTACT PIN | BRASS | GOLD | | 1 | DO NOT SCALE DRAWING | | |
| 2 | INSULATOR | TEFLON | NATURAL | | 1 | | | SIZE A |
| 1 | BODY | BRASS | NICKEL | | 1 | | | SCALE NA |
| | DESCRIPTION | MATERIAL | FINISH | QTY | | | | |