

Excellent Integrated System Limited

Stocking Distributor

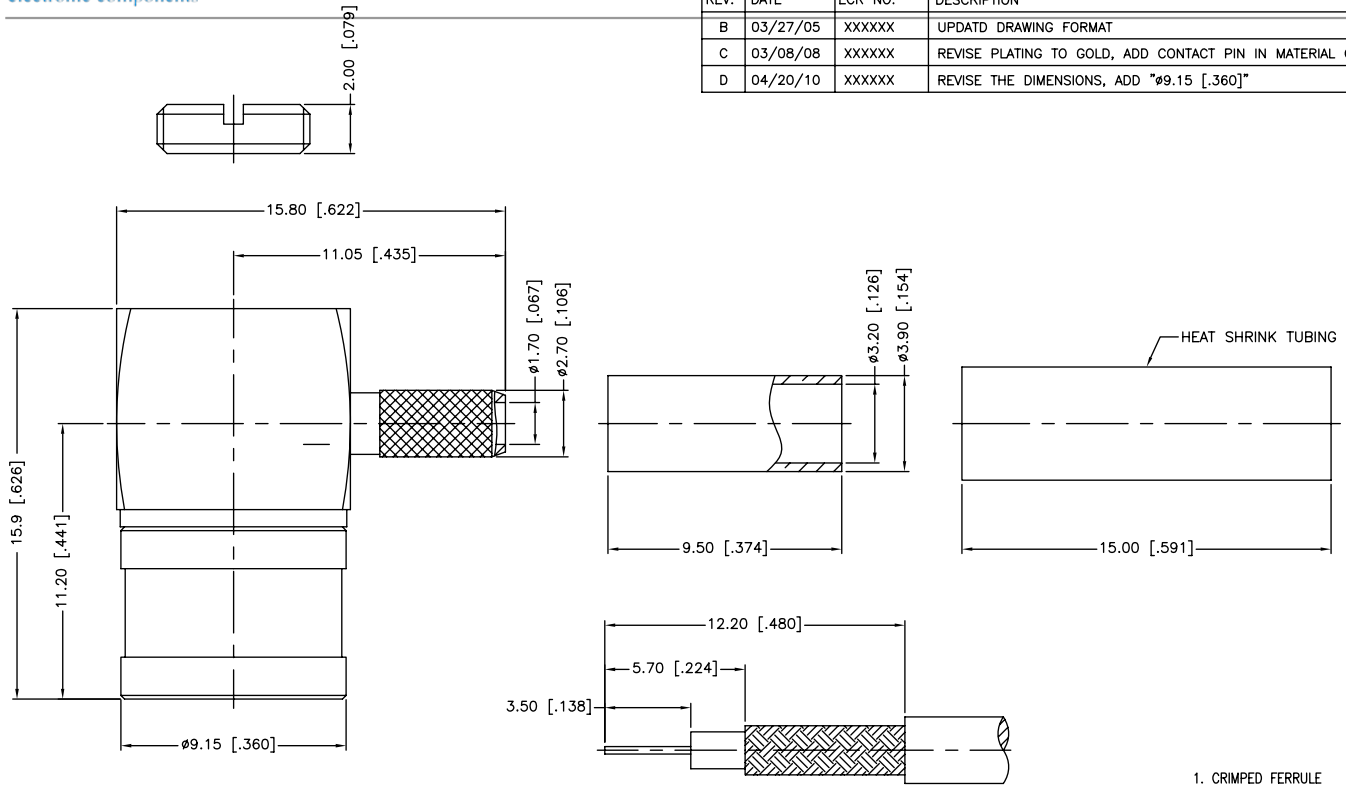
Click to view price, real time Inventory, Delivery & Lifecycle Information:

[Amphenol RF](#)
[142115](#)

For any questions, you can email us directly:

sales@integrated-circuit.com

REV.	DATE	ECR NO.	DESCRIPTION
B	03/27/05	XXXXXX	UPDATD DRAWING FORMAT
C	03/08/08	XXXXXX	REVISE PLATING TO GOLD, ADD CONTACT PIN IN MATERIAL CALLOUT
D	04/20/10	XXXXXX	REVISE THE DIMENSIONS, ADD "Ø9.15 [.360]"



1. CRIMPED FERRULE
HEX CRIMP SIZE .128"
2. CONTACT PIN TO SOLDER

RECOMMENDED
CABLE STRIPPING DIM'S

QTY	DESCRIPTION	MATERIAL	FINISH	QTY
9	HEAT SHRINK TUBING		BLACK	1
8	FERRULE	BRASS	GOLD	1
7	NUT	BRASS	GOLD	1
6	RETAINER RING	BERYLLIUM COPPER	NATURAL	1
5	CONTACT PIN	BERYLLIUM COPPER	GOLD	1
4	INSULATOR	PTFE	NATURAL	1
3	BARREL	BRASS	GOLD	1
2	BODY	BRASS	GOLD	1
1	SHELL	BRASS	GOLD	1
	DESCRIPTION	MATERIAL	FINISH	QTY

UNLESS OTHERWISE SPECIFIED DIMENSIONS ARE IN MILLIMETERS. DIMENSIONS IN [] ARE IN INCHES AND FOR CUSTOMER REFERENCE ONLY.

UNLESS OTHERWISE SPECIFIED TOLERANCES FOR MILLIMETERS ARE:
 0.5 - 8mm ± 0.20mm
 8 - 30mm ± 0.40mm
 30 - 120mm ± 0.50mm

UNLESS OTHERWISE SPECIFIED TOLERANCES FOR INCHES ARE:
 .020 - .315 = ± 0.007"
 .315 - 1.180 = ± 0.015"
 1.180 - 4.724 = ± 0.020"

DO NOT SCALE DRAWING

APPROVALS	DATE
DRAWN M.ZHANG	04/20/10
CHECKED	
ISSUED	
SHEET 1 OF 1	
CAD FILE C:/CONNEX/142115.DWG	

Amphenol Connex

PART DESCRIPTION
**SMB R/A CRIMP PLUG
 (FOR RG-179/U, 187A/U - 75 OHM)**

PART NO.
142115

DWG. NO. 142115.DWG

REV. D SIZE A SCALE NA