

Excellent Integrated System Limited

Stocking Distributor

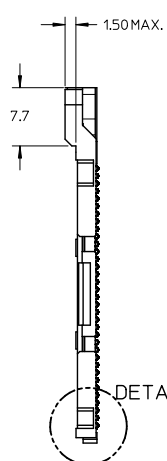
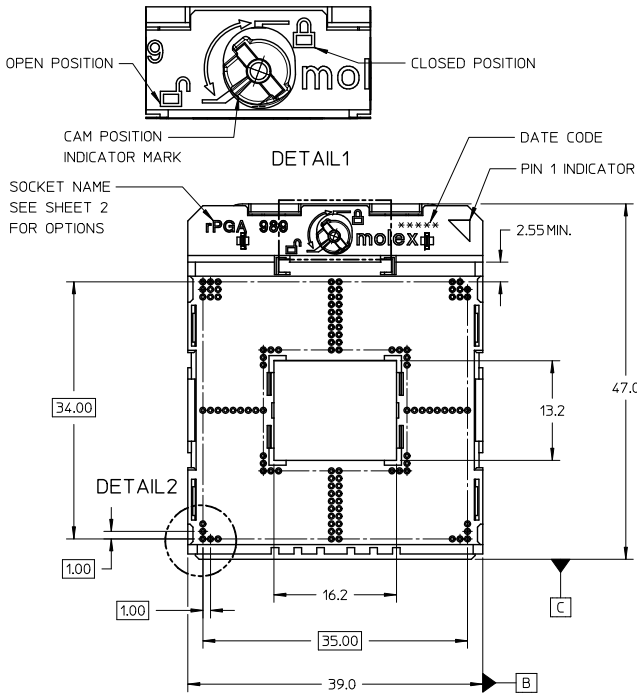
Click to view price, real time Inventory, Delivery & Lifecycle Information:

[Molex Connector Corporation](#)
[0479890142](#)

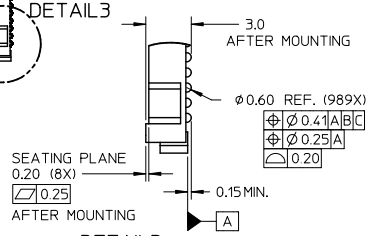
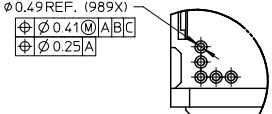
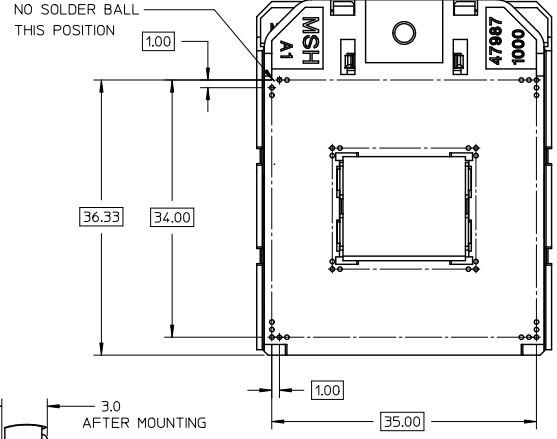
For any questions, you can email us directly:

sales@integrated-circuit.com

10 9 8 7 6 5 4 3 2 1



- NOTES:
- 1) THIS SOCKET COMPLIES WITH ALL SPECIFICATIONS AND PERFORMANCE REQUIREMENTS FOR INTEL rPGA98X SERIES CPU PROCESSORS.
 - 2) SOCKET SHOWN IN OPEN POSITION.
 - 3) SEE SHEET 2 FOR DETAILS PERTAINING TO KEYING, MATERIAL AND PACKAGING OPTIONS.
 - 4) THIS PRODUCT SERIES COMPLIANT TO RoHS DIRECTIVE 2002/95/EC AND ELV DIRECTIVE 2000/53/EC.

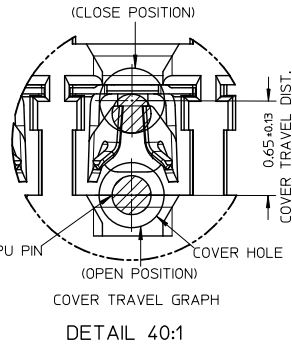
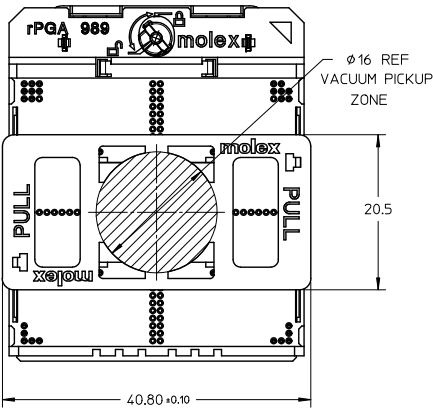


REVISED EC NO: SH2011-0076 DRAWN BY: DRWANZHYAN CHKD: CHKD: APP: AYIN	DESCRIPTION 2010/09/03 2010/09/06 2010/09/17	QUALITY SYMBOLS ▽=0 ▽=0 ▽=0	GENERAL TOLERANCES (UNLESS SPECIFIED)		DIMENSION STYLE MM ONLY		SCALE 2:1	DESIGN UNITS METRIC	THIRD ANGLE PROJECTION		
			4 PLACES ± --- ± ---	3 PLACES ± --- ± ---	2 PLACES ± 0.10 ± ---	1 PLACE ± 0.20 ± ---	ANGULAR ± 2 °	DRAWN BY: QWFANG DATE: 2008/04/25	CHECKED BY: JKACHLIC DATE: 2008/05/29	APPROVED BY: CL IANG DATE: 2008/05/29	TITLE RPGA989 SOCKET ASSEMBLY
DRAFT WHERE APPLICABLE MUST REMAIN WITHIN DIMENSIONS			THIS DRAWING CONTAINS INFORMATION THAT IS PROPRIETARY TO MOLEX INCORPORATED AND SHOULD NOT BE USED WITHOUT WRITTEN PERMISSION								

9 8 7 6 5 4 3 2 1

10 9 8 7 6 5 4 3 2 1

REMOVEABLE PICK & PLACE CAP

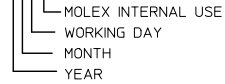


NOTES:

1) MATERIALS:

MOLDED COMPONENTS: LIQUID CRYSTAL POLYMER (LCP) UL 94V-0
 BASE HOUSING COLOR: BLACK
 COVER COLOR: NATURAL
 MYLAR(POLYIMIDE, COLOR:ORANGE) OR PnP COVER(LCP, COLOR: BLACK)
 FOR PICK & PLACE.
 CONTACTS: HIGH STRENGTH COPPER ALLOY
 PLATING: GOLD THICKNESS AS FOLLOWING TABLE 1-3 IN CONTACT AREA,
 1.3µm NICKEL OVERALL
 CAM COMPONENTS: STAINLESS STEEL
 SOLDER BALL: LEAD-FREE BALL SnAg3.0Cu0.5

2) DATE CODE *****



3) PRODUCT SPECIFICATION PS-47989-00* APPLIES

4) PACKAGING SPECIFICATION: PK-47989-001 (TAPE & REEL)
 PK-47989-002 (HARD TRAY)

REVISED EC NO: SH2011-0076 DRW: DRWNYAN CHKD: 2010/09/06 APPR: AYTN 2010/09/17	QUALITY SYMBOLS	GENERAL TOLERANCES (UNLESS SPECIFIED)	DIMENSION STYLE	SCALE	DESIGN UNITS	THIRD ANGLE PROJECTION	
	▽=0	mm INCH	MM ONLY	2:1	METRIC		
	▽=0	4 PLACES ± --- ± ---	DRAWN BY DATE			TITLE	
	▽=0	3 PLACES ± --- ± ---	QWFANG 2008/04/25			RPGA989 SOCKET ASSEMBLY	
	2 PLACES ± 0.10 ± ---	CHECKED BY DATE					
	1 PLACE ± 0.20 ± ---	JKACHLIC 2008/05/29					
	ANGULAR ± 2 °	APPROVED BY DATE					
		CLIANG 2008/05/29					
	DRAFT WHERE APPLICABLE MUST REMAIN WITHIN DIMENSIONS	MATERIAL NO.					
		SEE TABLE					
		SIZE A3					
		THIS DRAWING CONTAINS INFORMATION THAT IS PROPRIETARY TO MOLEX INCORPORATED AND SHOULD NOT BE USED WITHOUT WRITTEN PERMISSION					
					DOCUMENT NO. SD-47989-001	SHEET NO. 2 OF 6	

9 8 7 6 5 4 3 2 1

10 9 8 7 6 5 4 3 2 1

PART NO. OF GF PLATING- TABLE 1

PART NUMBER	PICK UP TYPE		PACKAGE TYPE		PRODUCT SPEC.
	MYLAR	CAP	T&R	HARD TRAY	
47989-0110	◆			◆	PS-47989-002
47989-0120	◆		◆		
47989-0130		◆		◆	
47989-0140		◆	◆		
47989-0210	◆			◆	
47989-0220	◆		◆		
47989-0230		◆		◆	
47989-0240		◆	◆		

PART NO. OF 10u" MIN. GOLD PLATING- TABLE 2

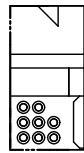
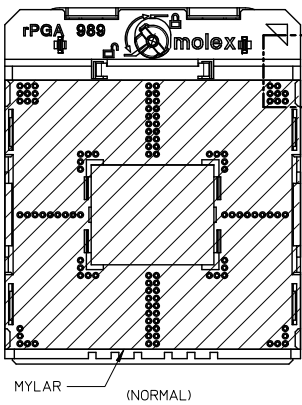
PART NUMBER	PICK UP TYPE		PACKAGE TYPE		PRODUCT SPEC.
	MYLAR	CAP	T&R	HARD TRAY	
47989-0111	◆			◆	PS-47989-003
47989-0121	◆		◆		
47989-0131		◆		◆	
47989-0141		◆	◆		
47989-0211	◆			◆	
47989-0221	◆		◆		
47989-0231		◆		◆	
47989-0241		◆	◆		

PART NO. OF 15u" MIN. GOLD PLATING- TABLE 3

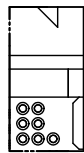
PART NUMBER	PICK UP TYPE		PACKAGE TYPE		PRODUCT SPEC.
	MYLAR	CAP	T&R	HARD TRAY	
47989-0112	◆			◆	PS-47989-001
47989-0122	◆		◆		
47989-0132		◆		◆	
47989-0142		◆	◆		
47989-0212	◆			◆	
47989-0222	◆		◆		
47989-0232		◆		◆	
47989-0242		◆	◆		

SOCKET KEYING OPTIONS

MYLAR PICK & PLACE OPTION



rPGA989
47989-01**

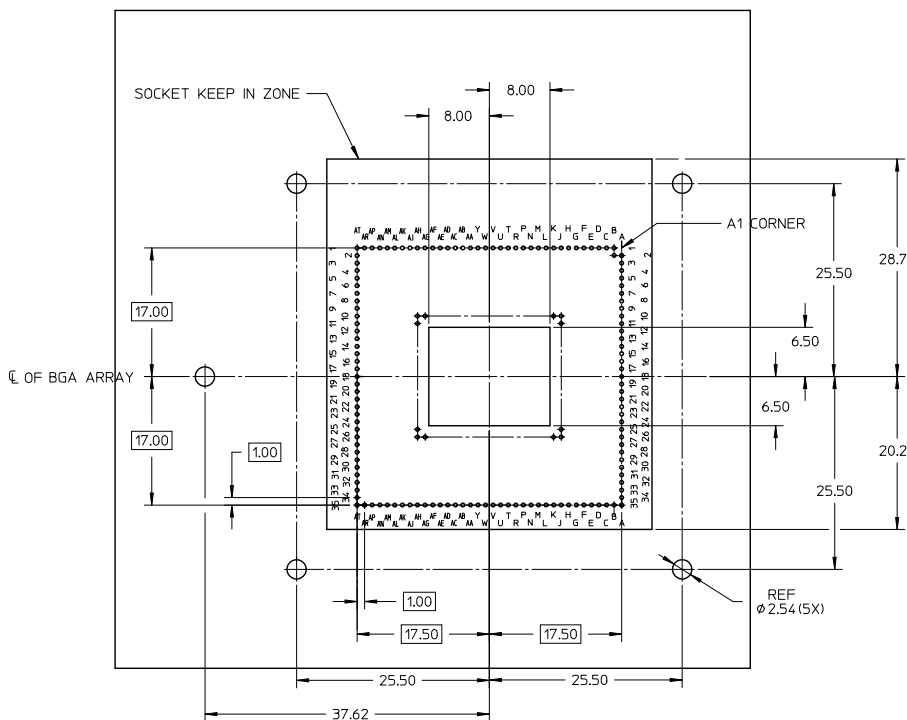


rPGA988A
47989-02**

REVISED EC NO: SH2011-0076 DRAWN BY: DINGWENZYUAN CHKD: 2010/09/06 APPR: AYIN 2010/09/17	QUALITY SYMBOLS √=0 √=0 √=0	GENERAL TOLERANCES (UNLESS SPECIFIED)		DIMENSION STYLE MM ONLY		SCALE 2:1	DESIGN UNITS METRIC	THIRD ANGLE PROJECTION	
		4 PLACES ± --- ± ---	3 PLACES ± --- ± ---	2 PLACES ± 0.10 ± ---	1 PLACE ± 0.20 ± ---	DRAWN BY: QWFANG DATE: 2008/04/25	TITLE RPGA989 SOCKET ASSEMBLY		
		ANGULAR ± 2 °		DRAFT WHERE APPLICABLE MUST REMAIN WITHIN DIMENSIONS		CHECKED BY: JKACHLIC DATE: 2008/05/29	APPROVED BY: CL IANG DATE: 2008/05/29		
		MATERIAL NO. SEE TABLE		MOLEX INCORPORATED		DOCUMENT NO. SD-47989-001		SHEET NO. 3 OF 6	

9 8 7 6 5 4 3 2 1

10 9 8 7 6 5 4 3 2 1



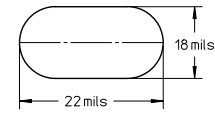
NOTES:

shape pada of PCB are recommended

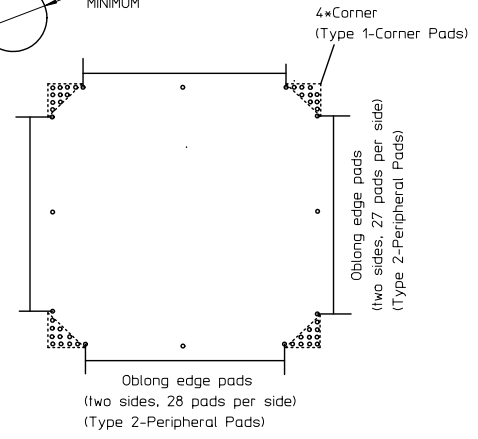
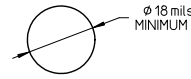
TYPE1-Corner Pads



TYPE2-Peripheral Pads(Oblong-shape pada are recommended)



TYPE3-All Other Location Except for those of Type1 and Type2 Locations)



MOTHERBOARD KEEP IN ZONE (KIZ)
(FOR NORMAL)

REVISED EC NO. SH2011-0076 DRAWN:ZYAN CHKD: APPR:AYIN	DESCRIPTION 2010/09/03 2010/09/06 2010/09/17	QUALITY SYMBOLS ▽=0 ▽=0 ▽=0	GENERAL TOLERANCES (UNLESS SPECIFIED)		DIMENSION STYLE MM ONLY		SCALE	DESIGN UNITS METRIC	THIRD ANGLE PROJECTION
			4 PLACES ± --- ± ---	3 PLACES ± --- ± ---	2 PLACES ± 0.10 ± ---	1 PLACE ± 0.20 ± ---	ANGULAR ± 2 °	DRAWN BY QWFANG	
DRAFT WHERE APPLICABLE MUST REMAIN WITHIN DIMENSIONS			SEE TABLE		MATERIAL NO. CL1ANG		DATE 2008/05/29		MATERIAL NO. MOLEX
THIS DRAWING CONTAINS INFORMATION THAT IS PROPRIETARY TO MOLEX INCORPORATED AND SHOULD NOT BE USED WITHOUT WRITTEN PERMISSION							DOCUMENT NO. SD-47989-001		SHEET NO. 4 OF 6

9 8 7 6 5 4 3 2 1

10 9 8 7 6 5 4 3 2 1

PART NO. OF GF PLATING- TABLE 1

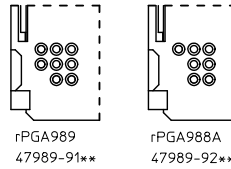
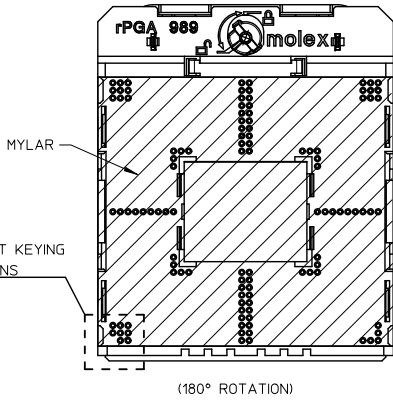
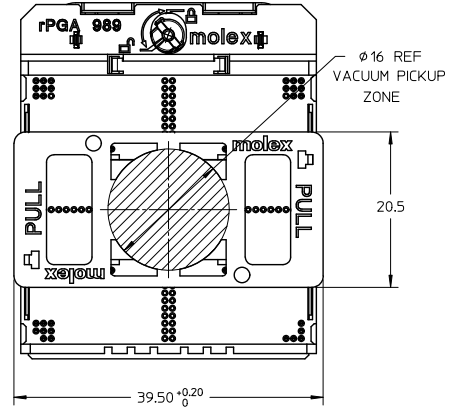
PART NUMBER	PICK UP TYPE		PACKAGE TYPE		PRODUCT SPEC.
	MYLAR	CAP	T&R	HARD TRAY	
47989-9110	◆			◆	PS-47989-002
47989-9120	◆		◆		
47989-9130		◆		◆	
47989-9140		◆	◆		
47989-9210	◆			◆	
47989-9220	◆		◆		
47989-9230		◆		◆	
47989-9240		◆	◆		

PART NO. OF 10u" MIN. GOLD PLATING- TABLE 2

PART NUMBER	PICK UP TYPE		PACKAGE TYPE		PRODUCT SPEC.
	MYLAR	CAP	T&R	HARD TRAY	
47989-9111	◆			◆	PS-47989-003
47989-9121	◆		◆		
47989-9131		◆		◆	
47989-9141		◆	◆		
47989-9211	◆			◆	
47989-9221	◆		◆		
47989-9231		◆		◆	
47989-9241		◆	◆		

PART NO. OF 15u" MIN. GOLD PLATING- TABLE 3

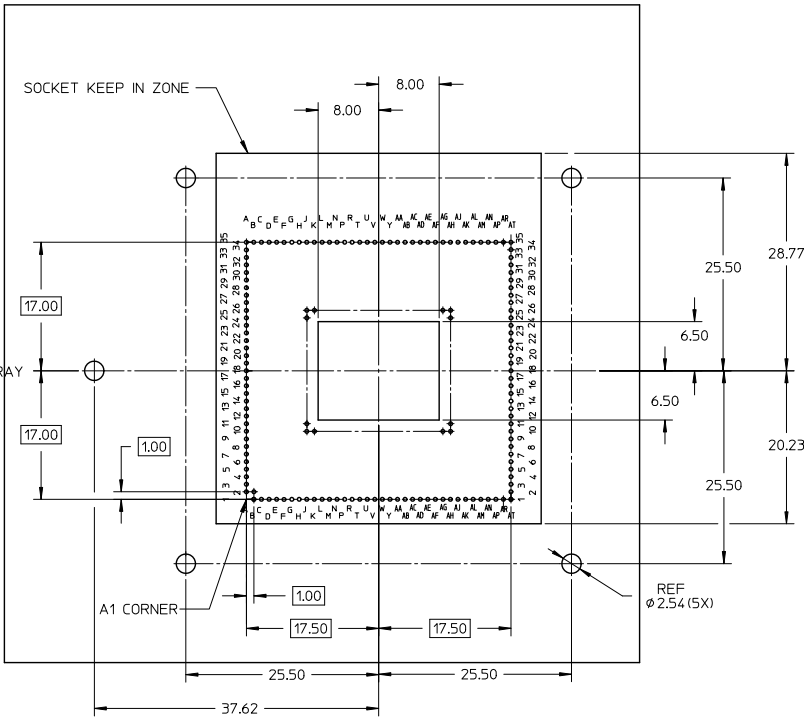
PART NUMBER	PICK UP TYPE		PACKAGE TYPE		PRODUCT SPEC.
	MYLAR	CAP	T&R	HARD TRAY	
47989-9112	◆			◆	PS-47989-001
47989-9122	◆		◆		
47989-9132		◆		◆	
47989-9142		◆	◆		
47989-9212	◆			◆	
47989-9222	◆		◆		
47989-9232		◆		◆	
47989-9242		◆	◆		



REVISED	EC. NO.	REV	DESCRIPTION	QUALITY SYMBOLS	GENERAL TOLERANCES (UNLESS SPECIFIED)		DIMENSION STYLE		SCALE	DESIGN UNITS	THIRD ANGLE PROJECTION
					mm	INCH	MM ONLY	MM ONLY			
REVISED	2010/09/03			▽=0	4 PLACES	± ---	± ---	DRAWN BY	DATE	TITLE	
	2010/09/06			▽=0	3 PLACES	± ---	± ---	QWFANG	2008/04/25	RPGA989 SOCKET ASSEMBLY	
	2010/09/17			▽=0	2 PLACES	± 0.10	± ---	CHECKED BY	DATE		
				▽=0	1 PLACE	± 0.20	± ---	JKACHLIC	2008/05/29		
					ANGULAR ± 2 °			APPROVED BY	DATE		
					DRAFT WHERE APPLICABLE MUST REMAIN WITHIN DIMENSIONS			CL IANG	2008/05/29		
					MATERIAL NO.			MOLEX INCORPORATED			
					SEE TABLE			DOCUMENT NO.			
					SIZE			SD-47989-001			
					THIS DRAWING CONTAINS INFORMATION THAT IS PROPRIETARY TO MOLEX INCORPORATED AND SHOULD NOT BE USED WITHOUT WRITTEN PERMISSION			SHEET NO.			
								5 OF 6			

9 8 7 6 5 4 3 2 1

10 9 8 7 6 5 4 3 2 1

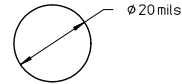


MOTHERBOARD KEEP IN ZONE (KIZ)
(FOR 180° ROTATION)

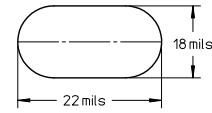
NOTES:

shape pada of PCB are recommended

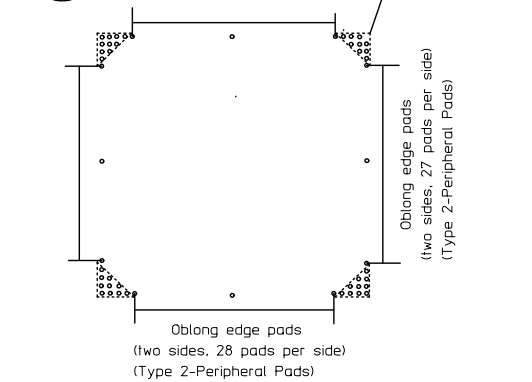
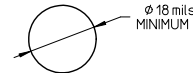
TYPE1-Corner Pads $\phi 20\text{mils}$



TYPE2-Peripheral Pads(Oblong-shape pada are recommended)



TYPE3-All Other Location Except for those of Type1 and Type2 Locations)



REVISED EC NO: SH2011-0076 DRW: ZYXIAN CHKD: ZYXIAN APPR: ATIN	2010/09/03	QUALITY SYMBOLS	GENERAL TOLERANCES (UNLESS SPECIFIED)		DIMENSION STYLE		SCALE	DESIGN UNITS	THIRD ANGLE PROJECTION
	2010/09/06	DESCRIPTION	mm	INCH	MM ONLY		2:1	METRIC	
	2010/09/17	REV	$\nabla=0$	4 PLACES \pm ---	\pm ---	DRAWN BY	DATE	TITLE	RPGA989 SOCKET ASSEMBLY MOLEX INCORPORATED SD-47989-001 SHEET NO. 6 OF 6
			$\nabla=0$	3 PLACES \pm ---	\pm ---	QWFANG	2008/04/25		
		$\nabla=0$	2 PLACES ± 0.10	\pm ---	CHECKED BY	DATE			
		$\nabla=0$	1 PLACE ± 0.20	\pm ---	JKACHLIC	2008/05/29			
			ANGULAR $\pm 2^\circ$		APPROVED BY	DATE			
			DRAFT WHERE APPLICABLE MUST REMAIN WITHIN DIMENSIONS		CLIANG	2008/05/29			
					MATERIAL NO.	SEE TABLE	DOCUMENT NO.		
					SIZE	A3	THIS DRAWING CONTAINS INFORMATION THAT IS PROPRIETARY TO MOLEX INCORPORATED AND SHOULD NOT BE USED WITHOUT WRITTEN PERMISSION		

9 8 7 6 5 4 3 2 1