

Excellent Integrated System Limited

Stocking Distributor

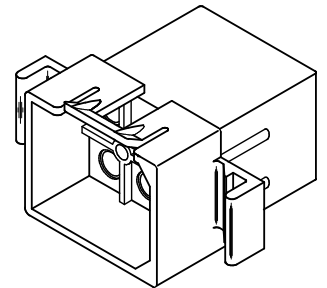
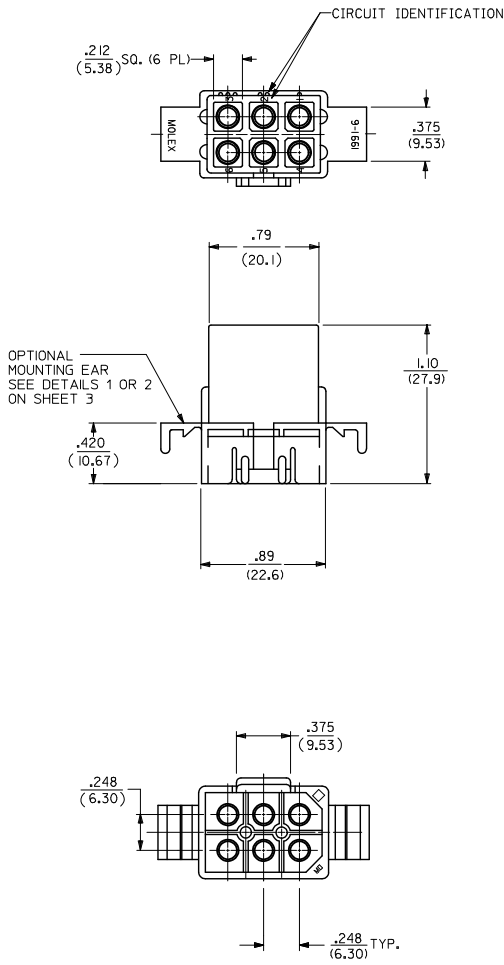
Click to view price, real time Inventory, Delivery & Lifecycle Information:

[Molex Connector Corporation](#)
[19-09-1061](#)

For any questions, you can email us directly:

sales@integrated-circuit.com

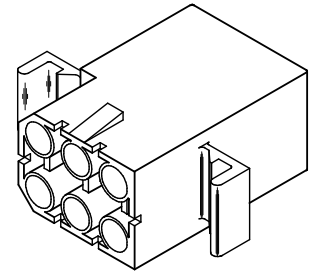
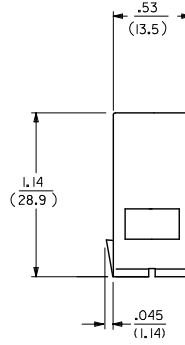
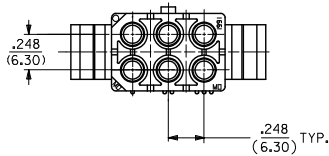
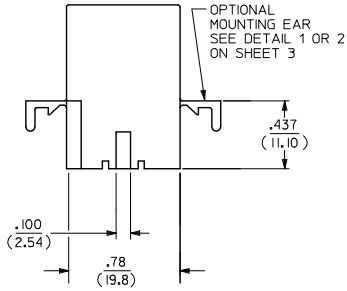
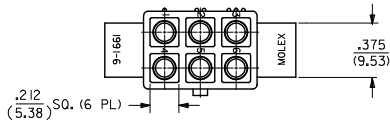
PLUG



PLUG HOUSING

REMOVE 1991-6R1-B EC NO: UCP2014-3949 DRAWN BY: 2014/05/19 CHKD BY: 2014/05/19 APPROVED BY: 2014/06/10	QUALITY SYMBOLS ▽=0 ▽=0 ▽=0	GENERAL TOLERANCES (UNLESS SPECIFIED) mm INCH 4 PLACES ± .005 ± .0005 3 PLACES ± .005 ± .0005 2 PLACES ± 0.25 ± .010 1 PLACE ± 0.36 ± .014 0 PLACE ± .005 ± .0005	DIMENSION STYLE IN/MM	SCALE 2:1	DESIGN UNITS INCH	THIRD ANGLE PROJECTION
			DRAWN BY: JJS CHECKED BY: RW APPROVED BY: SMITH DATE: 1988/02/25 DATE: 1988/02/25 DATE: 2014/06/10	TITLE .093/(2.36) HOUSINGS PLUG AND RECEPTACLE 6 CKT. .248/(6.30) CTRS.	MATERIAL NO. SEE CHART	DOCUMENT NO. SD-1991-6*
DRAFT WHERE APPLICABLE MUST REMAIN WITHIN DIMENSIONS		THIS DRAWING CONTAINS INFORMATION THAT IS PROPRIETARY TO MOLEX INCORPORATED AND SHOULD NOT BE USED WITHOUT WRITTEN PERMISSION				

RECEPTACLE

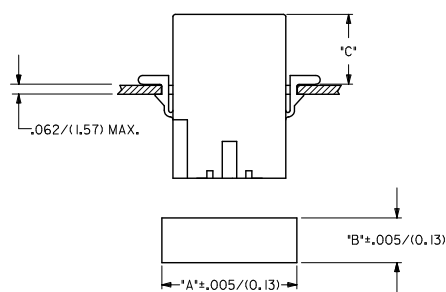


RECEPTACLE HOUSING

SEE SHEET 1 EC NO: UCP2014-3949 DRAWN BY: 2014/05/19 CHKD BY: 2014/05/19 APPROVED BY: 2014/06/10	QUALITY SYMBOLS ∇=0 ∇=0 ∇=0	GENERAL TOLERANCES (UNLESS SPECIFIED)		DIMENSION STYLE IN/MM		SCALE 2:1	DESIGN UNITS INCH	THIRD ANGLE PROJECTION
		4 PLACES ± --- ± ---	3 PLACES ± --- ± .010	DRAWN BY: JJS DATE: 1988/02/25	TITLE .093/(2.36) HOUSINGS PLUG AND RECEPTACLE 6 CKT, .248/(6.30) CTRS.			
		2 PLACES ± 0.25 ± .014	1 PLACE ± 0.36 ± ---	CHECKED BY: RW DATE: 1988/02/25	APPROVED BY: F SMITH DATE: 2014/06/10			
		0 PLACE ± --- ± ---	ANGULAR ± 1 °	MATERIAL NO. SEE CHART	DOCUMENT NO. SD-1991-6*	SHEET NO. 2 OF 3		
DRAFT WHERE APPLICABLE MUST REMAIN WITHIN DIMENSIONS		THIS DRAWING CONTAINS INFORMATION THAT IS PROPRIETARY TO MOLEX INCORPORATED AND SHOULD NOT BE USED WITHOUT WRITTEN PERMISSION						

PLUG		
PART NO.	ENG. NO.	PKG. INFORMATION
19-09-2061	1991-6P	PK-1991-001
19-09-2062	1991-6P1	PK-1991-001
19-09-7061	1991-6PBK	PK-1991-001
19-09-7062	1991-6P1BK	PK-1991-001

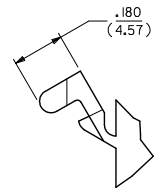
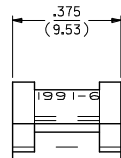
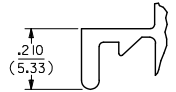
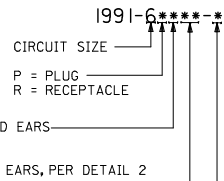
RECEPTACLE		
PART NO.	ENG. NO.	PKG. INFORMATION
19-09-1061	1991-6R	PK-1991-001
19-09-1062	1991-6R1	PK-1991-002
19-09-6061	1991-6RBK	PK-1991-001



HOUSING	DIM. "A"	DIM. "B"	DIM. "C" STD. EAR	DIM. "C" PREBENT
PLUG	1.048/(26.62)	.658/(16.71)	.51/(12.9)	.52/(13.2)
RECEPTACLE	.946/(24.03)	.608/(15.44)	.53/(13.5)	.54/(13.7)

- NOTES:
- MATERIAL CODES:
A - NYLON TYPE 6/6, UL 94V-2
B - NYLON TYPE 6/6, UL 94V-0
 - FINISH: N/A
 - PRODUCT SPECIFICATION: PS-02-09
 - PACKAGING SPECIFICATION: SEE CHART
 - HOUSINGS FOR USE WITH MOLEX STD. .093/(2.36) TYPE TERMINALS.
 - PARTS CONFORM TO CLASS B REQUIREMENTS OF COSMETIC SPECIFICATION PS-45499-002.

LEGEND:



DETAIL 2
PREBENT MOUNTING EAR
(SCALE 4:1)

SEE SHEET 1 EC NO: UCP2014-3949 DRAWN BY: 2014/05/19 CHKD BY: 2014/05/19 APPROVED BY: 2014/06/10	QUALITY SYMBOLS ∇=0 ∇=0 ∇=0	GENERAL TOLERANCES (UNLESS SPECIFIED)		DIMENSION STYLE IN/MM		SCALE 2:1	DESIGN UNITS INCH	THIRD ANGLE PROJECTION		
		4 PLACES ± --- ± ---	3 PLACES ± --- ± .010	2 PLACES ± 0.25 ± .014	1 PLACE ± 0.36 ± ---	0 PLACE ± --- ± ---	DRAWN BY: JJS DATE: 1988/02/25	CHECKED BY: RW DATE: 1988/02/25	APPROVED BY: F SMITH DATE: 2014/06/10	TITLE .093/(2.36) HOUSINGS PLUG AND RECEPTACLE 6 CKT, .248/(6.30) CTRS.
		ANGULAR ± 1 °		DRAFT WHERE APPLICABLE MUST REMAIN WITHIN DIMENSIONS		SEE CHART		MATERIAL NO. SD-1991-6*		DOCUMENT NO.
		THIS DRAWING CONTAINS INFORMATION THAT IS PROPRIETARY TO MOLEX INCORPORATED AND SHOULD NOT BE USED WITHOUT WRITTEN PERMISSION								SHEET NO. 3 OF 3