

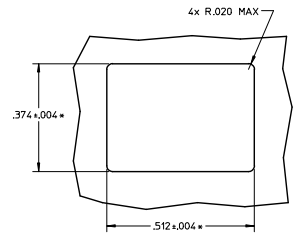
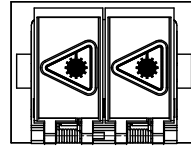
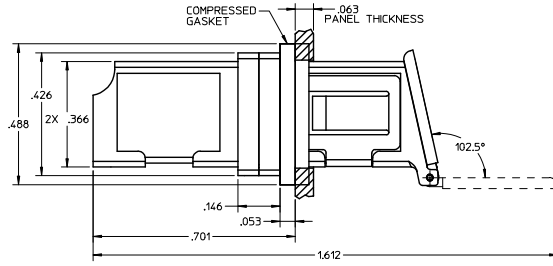
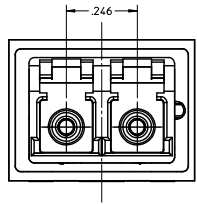
## Excellent Integrated System Limited

Stocking Distributor

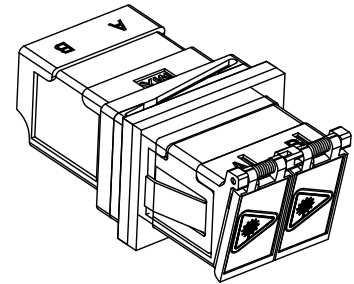
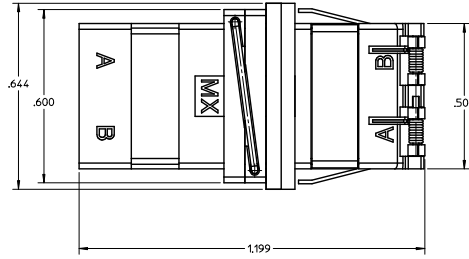
Click to view price, real time Inventory, Delivery & Lifecycle Information:

[Molex Connector Corporation](#)  
[1061152900](#)

For any questions, you can email us directly:  
[sales@integrated-circuit.com](mailto:sales@integrated-circuit.com)



RECOMMENDED PANEL CUTOUT  
PANEL THICKNESS - .063"



NOTES:

1. ALL DIMENSIONS ARE FOR REFERENCE ONLY EXCEPT WHEN MARKED WITH (\*).
2. EMI GASKET IS SUPPLIED WITH PART.
3. PART IS DIECAST.
4. DUST CAP IS NOT SHOWN.
5. ADAPTERS TO BE PACKAGED IN TRAY.

<b>ENTER DESCRIPTION</b> EC NO: MF2010-0005 DRAWN BY: 2009/07/17 CHKD: 2009/07/22 APPR: LGMIN 2009/07/23 A3	<b>QUALITY SYMBOLS</b> ▽=0 ▽=0	GENERAL TOLERANCES (UNLESS SPECIFIED)		DIMENSION STYLE INCH ONLY		SCALE	DESIGN UNITS	THIRD ANGLE PROJECTION		
			mm	INCH	DRAWN BY	DATE	INCH	INCH	TITLE LC-D EMI ADAPTER (SNAP MOUNT, W/SHUTTERS)	
		4 PLACES	±	---	PGIBLIN	2005/12/09			MOLEX INCORPORATED	
		3 PLACES	±	---	CHECKED BY	DATE			MATERIAL NO. 1061152900 DOCUMENT NO. SD-106115-2900 SHEET NO. 1 OF 1	
2 PLACES	±	---	APPROVED BY	DATE	THIS DRAWING CONTAINS INFORMATION THAT IS PROPRIETARY TO MOLEX INCORPORATED AND SHOULD NOT BE USED WITHOUT WRITTEN PERMISSION					
1 PLACE	±	---	ANGULAR ±1/2°							
DRAFT WHERE APPLICABLE MUST REMAIN WITHIN DIMENSIONS										