

## Excellent Integrated System Limited

Stocking Distributor

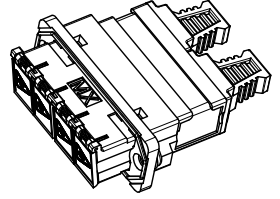
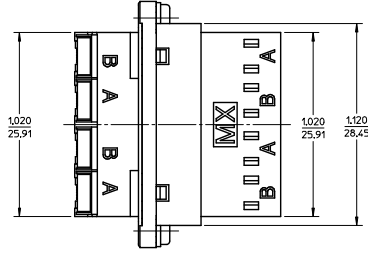
Click to view price, real time Inventory, Delivery & Lifecycle Information:

[Molex Connector Corporation](#)  
[1061230600](#)

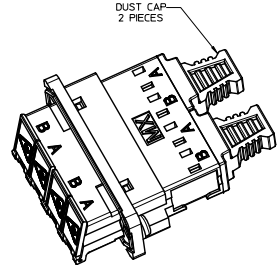
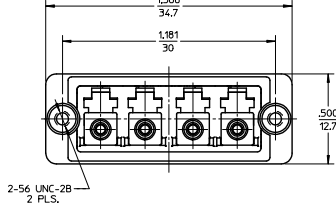
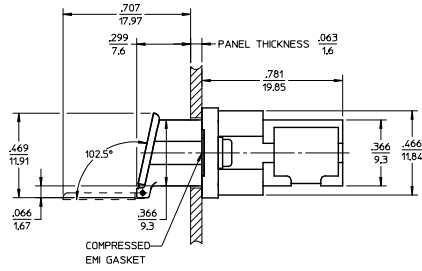
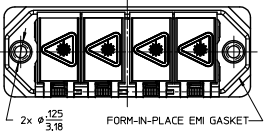
For any questions, you can email us directly:

[sales@integrated-circuit.com](mailto:sales@integrated-circuit.com)

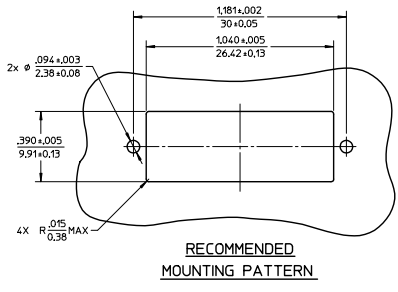
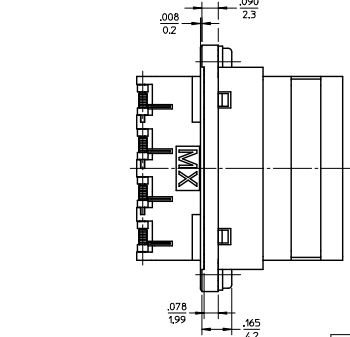
ADAPTER P/N	RECEPTACLE COLOR	LC DOOR COLOR
106123-0600	BLUE	BLUE
106123-0650	GREEN	GREEN



ISO VIEW 2  
SCALE 2:1



ISO VIEW 1  
SCALE 2:1



- NOTES:
1. ALL DIMENSIONS ARE FOR REFERENCE.
  2. TWO DUST CAPS SHOWN IN ISOMETRIC VIEWS ONLY.
  3. LC EMI QUAD ADAPTER HAS SC DUPLEX ADAPTER FOOTPRINT.

ENTER DESCRIPTION EC NO: MF2013-0264 DRAWN BY: YB CHKD: SM APPR: IGMJN DATE: 2012/11/09	QUALITY SYMBOLS ∇=0 ∇=0 ∇=0	GENERAL TOLERANCES (UNLESS SPECIFIED)		DIMENSION STYLE IN/MM		SCALE 2.5:1	DESIGN UNITS INCH	THIRD ANGLE PROJECTION
		4 PLACES ± --- ± --- 3 PLACES ± --- ± --- 2 PLACES ± --- ± --- 1 PLACE ± --- ± --- 0 PLACE ± --- ± ---	DRAWN BY: YB DATE: 3.03.06 CHECKED BY: SM DATE: APPROVED BY: IGMJN DATE: 2010/02/23	TITLE LC EMI QUAD ADAPTER SCREW MOUNT			molex	
DRAFT WHERE APPLICABLE MUST REMAIN WITHIN DIMENSIONS		ANGULAR ± --- ° SEE TABLE		MATERIAL NO. SD-106123-0600		DOCUMENT NO.		