

Excellent Integrated System Limited

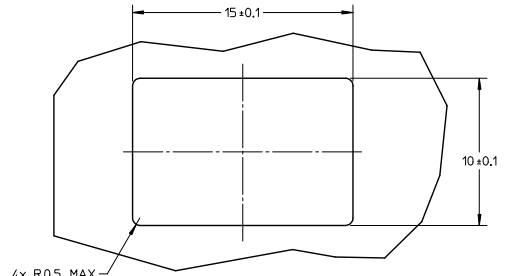
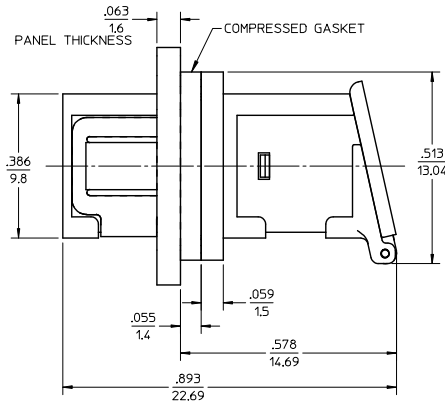
Stocking Distributor

Click to view price, real time Inventory, Delivery & Lifecycle Information:

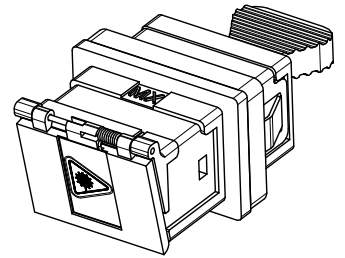
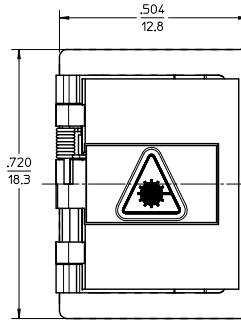
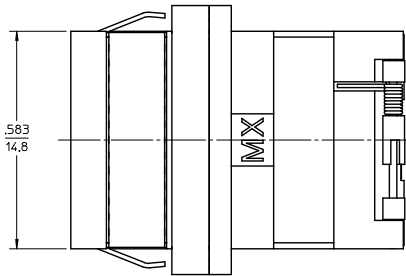
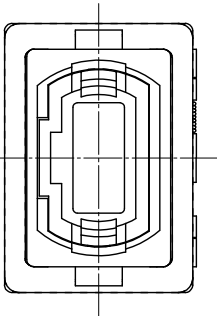
[Molex Connector Corporation](#)
[1061141200](#)

For any questions, you can email us directly:
sales@integrated-circuit.com

10 9 8 7 6 5 4 3 2 106114



RECOMMENDED PANEL CUTOUT FOR .063 THICK PANEL 1.6



NOTES:

1. CONDUCTIVE FABRIC OVER FOAM GASKET (SHOWN COMPRESSED) IS SUPPLIED WITH THE PART.
2. OUTER SHELL OF PART IS DIECAST.
3. DUST CAP SHOWN ONLY IN ISOMETRIC VIEW.
4. ADAPTERS TO BE PACKAGED IN TRAY.

ENTER DESCRIPTION E.C. NO: ME2013-07/7 DRAWN: BEDIYAK 2013/06/04 CHKD: GJM/N 2013/06/14 APPR: GJM/N REV:	QUALITY SYMBOLS ▽=0 ▽=0	GENERAL TOLERANCES (UNLESS SPECIFIED)		DIMENSION STYLE IN/MM		SCALE 4:1	DESIGN UNITS INCH	THIRD ANGLE PROJECTION
		mm	INCH	DRAWN BY	DATE	TITLE MPO EMI ADAPTER FLANGELS SMALL FLANGE		
	4 PLACES	± .---	± .---	KPEVZNER	2010/09/16			
	3 PLACES	± .---	± .---	CHECKED BY	DATE	MOLEX INCORPORATED		
2 PLACES	± 0.10	± .---	APPROVED BY	DATE				
1 PLACE	± 0.10	± .---	WCHEN	2010/09/16	MATERIAL NO. 1061141200			
ANGULAR ±1/2°		DRAFT WHERE APPLICABLE MUST REMAIN WITHIN DIMENSIONS		DOCUMENT NO. SD-106114-1200				SHEET NO. 1 OF 1
				SIZE	THIS DRAWING CONTAINS INFORMATION THAT IS PROPRIETARY TO MOLEX INCORPORATED AND SHOULD NOT BE USED WITHOUT WRITTEN PERMISSION			

9 8 7 6 5 4 3 2 1