

Excellent Integrated System Limited

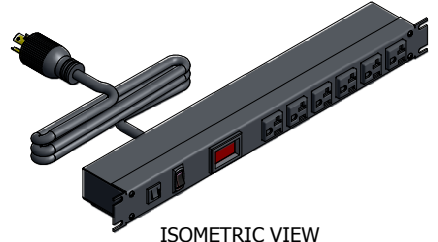
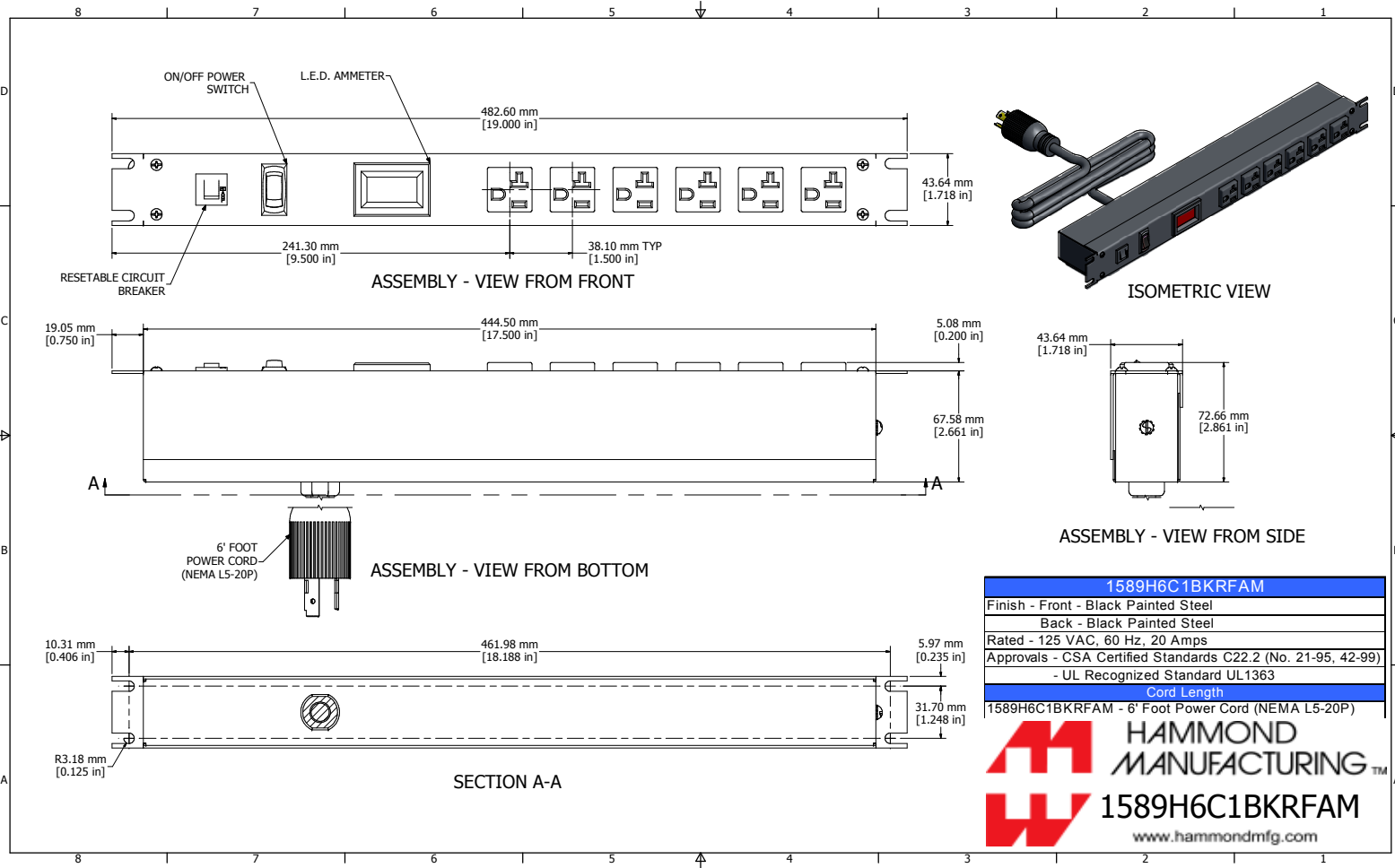
Stocking Distributor


Click to view price, real time Inventory, Delivery & Lifecycle Information:

[Hammond Manufacturing](#)
[1589H6C1BKRFAM](#)

For any questions, you can email us directly:

sales@integrated-circuit.com



1589H6C1BKRFAM	
Finish - Front - Black Painted Steel	Back - Black Painted Steel
Rated - 125 VAC, 60 Hz, 20 Amps	
Approvals - CSA Certified Standards C22.2 (No. 21-95, 42-99)	
- UL Recognized Standard UL1363	
Cord Length	
1589H6C1BKRFAM - 6' Foot Power Cord (NEMA L5-20P)	
 HAMMOND MANUFACTURING™ 1589H6C1BKRFAM www.hammondmfg.com	