

Excellent Integrated System Limited

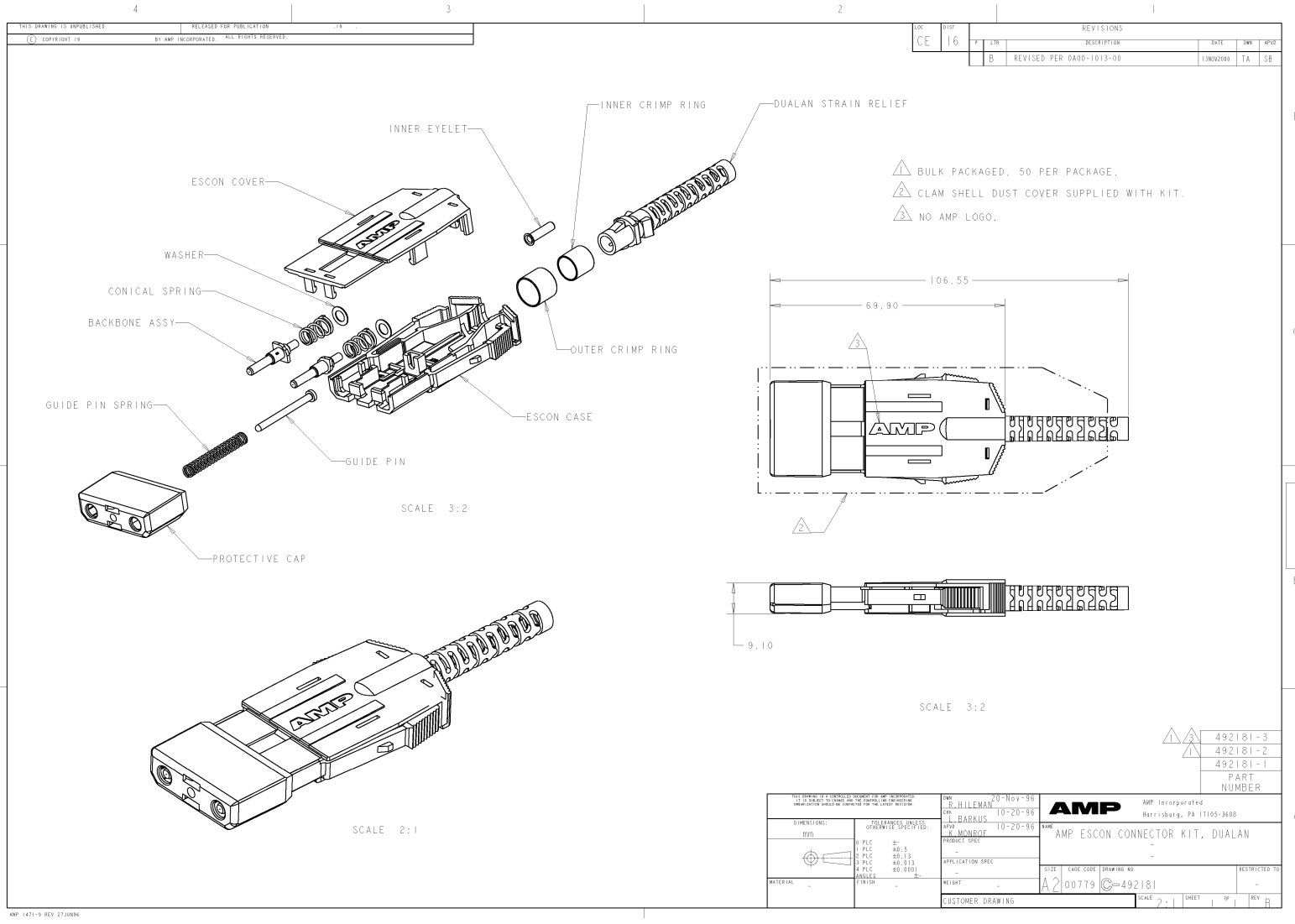
Stocking Distributor

Click to view price, real time Inventory, Delivery & Lifecycle Information:

[TE Connectivity AMP Connectors](#)
[492181-1](#)

For any questions, you can email us directly:

sales@integrated-circuit.com



LOC	REV	REVISED PER	DESCRIPTION	DATE	BY	APP'D
CE	16	B	REVISED PER 0A00-1013-00	13NOV2000	TA	SB

- △ BULK PACKAGED, 50 PER PACKAGE.
- △ CLAM SHELL DUST COVER SUPPLIED WITH KIT.
- △ NO AMP LOGO.

△	492181-3
△	492181-2
△	492181-1
	PART NUMBER

<small>THIS DRAWING IS A TECHNICAL DOCUMENT OF AMP INCORPORATED IT IS SUBJECT TO CHANGE AND THE CORRECT ONE SUPERSEDES OBSOLETE ONES OR BE OBTAINED FOR THE LATEST VERSION</small>		DWG: 20-Nov-96 DES: R. HILLEMANN CHK: L. BARKUS DATE: 10-20-96 APPR: K. MONROE DATE: 10-20-96	AMP AMP Incorporated Harrisburg, PA 17105-9608
DIMENSIONS: DIMS: M 0: PLC ±.005 1: PLC ±0.005 2: PLC ±0.010 3: PLC ±0.005 4: PLC ±0.005 FINISH: R	TOLERANCES UNLESS OTHERWISE SPECIFIED: 0: PLC ±.005 1: PLC ±0.005 2: PLC ±0.010 3: PLC ±0.005 4: PLC ±0.005 FINISH: R	PRODUCT SPEC: APPLICATION SPEC: WEIGHT:	NAME: AMP ESCON CONNECTOR KIT, DUALAN SIZE: A2 CASE CODE: 00779 DRAWING NO: 492181 RESTRICTED TO:
MATERIAL: -		CUSTOMER DRAWING	SCALE: 2:1 SHEET 1 OF 1 REV: B