

## Excellent Integrated System Limited

Stocking Distributor

Click to view price, real time Inventory, Delivery & Lifecycle Information:

[Schurter](#)  
[DKLP-0329-0330](#)

For any questions, you can email us directly:  
[sales@integrated-circuit.com](mailto:sales@integrated-circuit.com)

Compensated High Inductance Choke, 3-phase



**Description**

- Current compensated choke
- 3-phase choke
- Flexible wire
- Flange for mounting onto printed circuit board
- Fully potted resin

**Standards**

- EN 60938
- UL 1283
- CSA 22.2 no 8

**Applications**

- Placed in front of frequency converter
- Stepper motor drives
- UPS-systems
- Inverter

**Weblinks**

[pdf-datasheet](#), [html-datasheet](#), [General Product Information](#), [Approvals](#), [CE declaration of conformity](#), [RoHS](#), [CHINA-RoHS](#), [REACH](#), [Distributor-Stock-Check](#), [Detailed request for product](#)

**Technical Data**

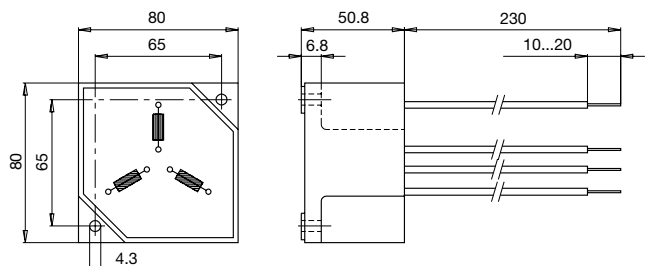
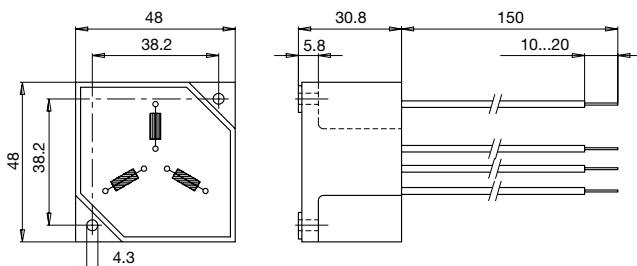
Rated voltage	up to 540VAC
	up to 760VDC
Rated Current	3 - 16A @ Ta 40 °C
Rated inductance	4.0 - 50mH, Tol. -30% +50%
Power Operating Frequency	50 - 400Hz
Terminal Type	Flexible wire
Weight	145 - 1840g
Material: Housing	UL 94V-0
Sealing Compound	UL 94V-0

Test Voltage	2.5kV, 50Hz, 2sec, winding to winding
Isolation Voltage	2.5kV eff., 50Hz, 2sec, winding to ambient
Climatic Category	25/100/21 acc. to IEC 60068-1
Allowable Operation Temp.	-25 °C to 100 °C

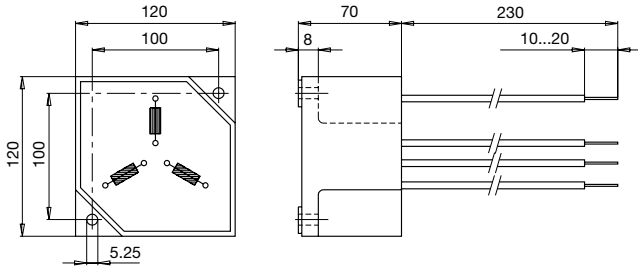
**Dimension**

Case 29-3W

Case 31-3W

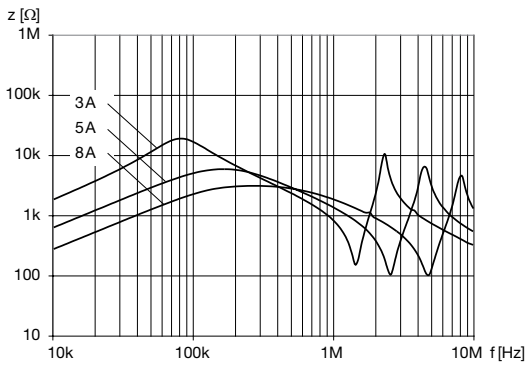


### Case 33-3W

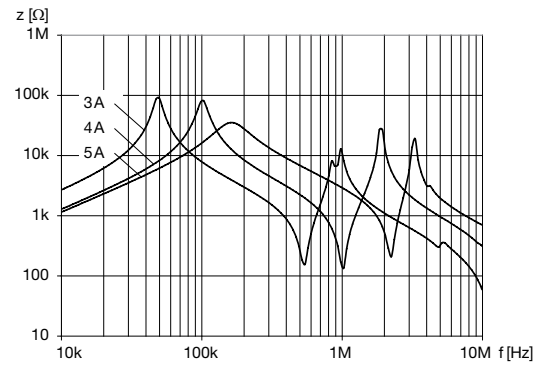


### Impedance curves

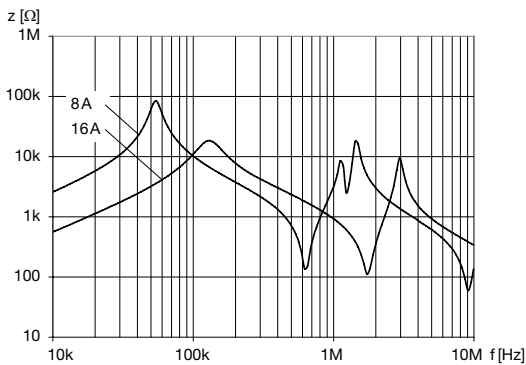
DKLP-0329-xxxx



DKLP-0331-xxxx



DKLP-0333-xxxx



### All Variants

$I_n$ [A]	$L_n$ [mH]	$R_{Cu}$ [mΩ]	$Power_{loss}$ [W]	$f_{RES}$ [MHz]	Copper $\phi$ [mm]	Weight [g]	Housings	Packing unit [pcs.]	Order Number
3	30	130	3.5	0.13	0.71	145 g	29-3W	12	DKLP-0329-0330
5	10	48	3.6	0.15	0.9	145 g	29-3W	12	DKLP-0329-0510
8	4	22	4.2	0.4	1.12	145 g	29-3W	12	DKLP-0329-0804
3	50	260	7	0.055	0.71	509 g	31-3W	2	DKLP-0331-0350
4	30	155	7.5	0.075	0.8	512 g	31-3W	2	DKLP-0331-0430
5	20	100	7.5	0.145	0.9	514 g	31-3W	2	DKLP-0331-0520
8	40	110	21	0.05	1.12	1726 g	33-3W	1	DKLP-0333-0840

**Suppression Chokes**

[www.schurter.com/PG81\\_82](http://www.schurter.com/PG81_82)

**DKLP-3**

---

16    10    30    23    0.14    1.6    1840g    33-3W    1    DKLP-0333-1610

---

Availability for all products can be searched real-time: <http://www.schurter.com/Stock-Check/Stock-Check-SCHURTER>

---