

Excellent Integrated System Limited

Stocking Distributor

Click to view price, real time Inventory, Delivery & Lifecycle Information:

[FCI](#)

[51940-104LF](#)

For any questions, you can email us directly:

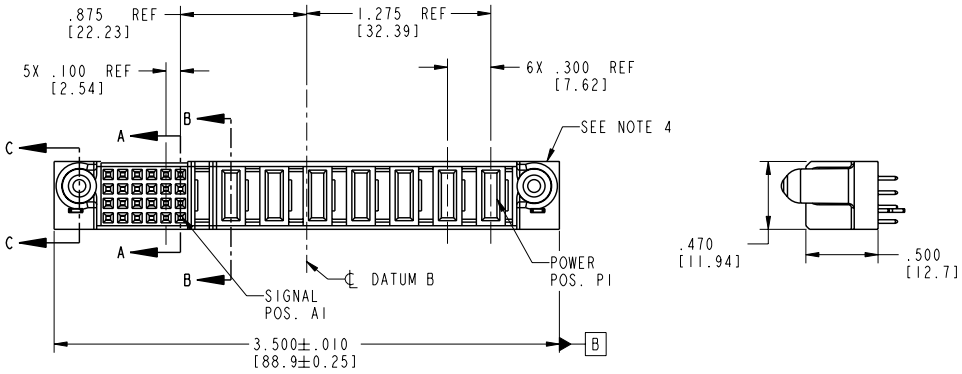
sales@integrated-circuit.com

Tous droits strictement réservés. Reproduction ou communication, o des liers interdite sous quelque forme que ce soit sans autorisation écrite du propriétaire. Propriété de c FCI. Droits de reproduction FCI.



All rights strictly reserved. Reproduction or issue to third parties in any form whatever is not permitted without written authority from the proprietor. Property of FCI. Copyright FCI.

| | | | | | | | | | | | | | | | | | |
|-------------------------|------------------|--------|---|---|---|---|---|---|----|-------|----|----|----|----|----|----|--|
| PRODUCT NO. | ROWS | SIGNAL | | | | | | | | POWER | | | | | | | |
| | | E2 | 6 | 5 | 4 | 3 | 2 | 1 | P7 | P6 | P5 | P4 | P3 | P2 | P1 | E1 | |
| 51940-104... NOTE: 3 | D C B A | | | | | | | | | | | | | | | | |



| CODE | DIM "M" | MATING LENGTH | CONTACT TYPE |
|------|---------|---------------|--------------|
| E | N/A | [N/A] | SIGNAL |
| PA | .042 | [1.07] | POWER |
| HA | N/A | [N/A] | HOLD-DOWN |

| | | | | | | | | | |
|-------------|-----------|----------------|----------|---------------------------------------|------------------------|------------|----------------|------------------------|------|
| mat'l code | | SEE NOTE 2 | | tolerances unless otherwise specified | | CUSTOMER | | FCI | |
| llr | ecn no. | dr | date | linear | .XX±.01/0.X±0.3 | projection | COPY | www.fciconnect.com | |
| A | V04-0907 | TAB | 09/09/04 | | .XXX±.005/0.XX±0.13 | | title | 7P + 24S | |
| B | V04-0951 | TAB | 09/24/04 | angles | .XXXX±.0020/0.XX±0.051 | | product family | VERTICAL SOLDER RECEPT | |
| C | V04-1034 | TAB | 10/19/04 | dr | T. BRUNGARD 09/09/04 | INCH/MM | size | PwrBlade | code |
| D | DG06-0252 | JMG | 06/27/06 | engr | M. GRAY 09/09/04 | scale | dwg no | 51940-104 | 213 |
| sheet index | | revision sheet | D D D D | chr | M. GRAY 09/09/04 | 1:1 | sheet | 1 of 4 | |
| | | | 1 2 3 4 | appd | M. GRAY 09/09/04 | | | | |

Pro/E

cage code 22526

PDM: Rev:D

STATUS:Released

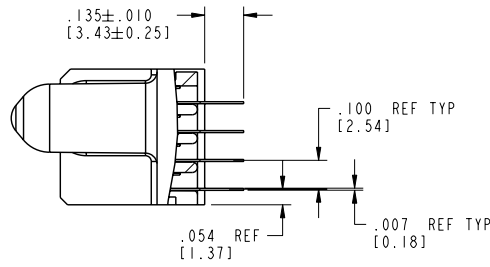
Printed: Dec 20, 2010

Tous droits strictement réservés. Reproduction ou communication, o des liens intermédiaire sous quelque forme que ce soit sans autorisation écrite du propriétaire. Propriété de c FCI. Droits de reproduction FCI.

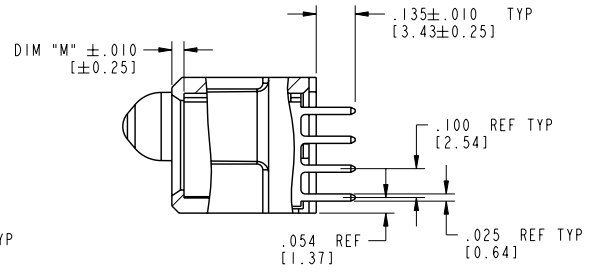


All rights strictly reserved. Reproduction or issue to third parties in any form whatever is not permitted without written authority from the proprietor. Property of FCI. Copyright FCI.

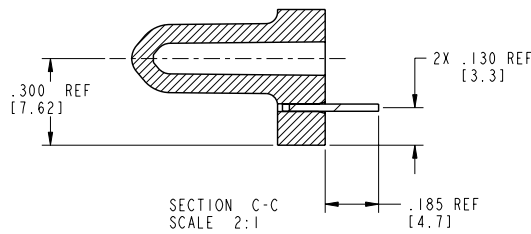
PRODUCT NUMBER
51940-104__
NOTE: 3



SECTION A-A
SCALE 2:1



SECTION B-B
SCALE 2:1



SECTION C-C
SCALE 2:1

| | | | | | | | | | |
|-------------|----------------|------------|----------------------|---------------------------------------|------------------------|------------|----------------|------------------------|--|
| mat'l code | | SEE NOTE 2 | | tolerances unless otherwise specified | | CUSTOMER | | FCI | |
| lfr | ecn no. | dr | date | linear | XX±.01/0, Y±0.3 | projection | COPY | www.fciconnect.com | |
| D | | | | linear | .XXX±.005/0, YY±0.13 | projection | title | 7P + 24S | |
| | | | | angles | XXXX±.0020/0, YY±0.051 | projection | title | VERTICAL SOLDER RECEPT | |
| | | | | angles | 0° ± 2° | projection | product family | PwrBlade | |
| | | dr | T. BRUNGARD 09/09/04 | scale | INCH/MM | projection | product family | code | |
| | | engr | M. GRAY 09/09/04 | scale | 1:1 | projection | product family | 213 | |
| | | chr | M. GRAY 09/09/04 | scale | 1:1 | projection | product family | sheet | |
| | | appd | M. GRAY 09/09/04 | scale | 1:1 | projection | product family | 2 of 4 | |
| sheet index | revision sheet | | | | | | size | A 51940-104 | |

Pro/E

cage code 22526

PDM: Rev:D

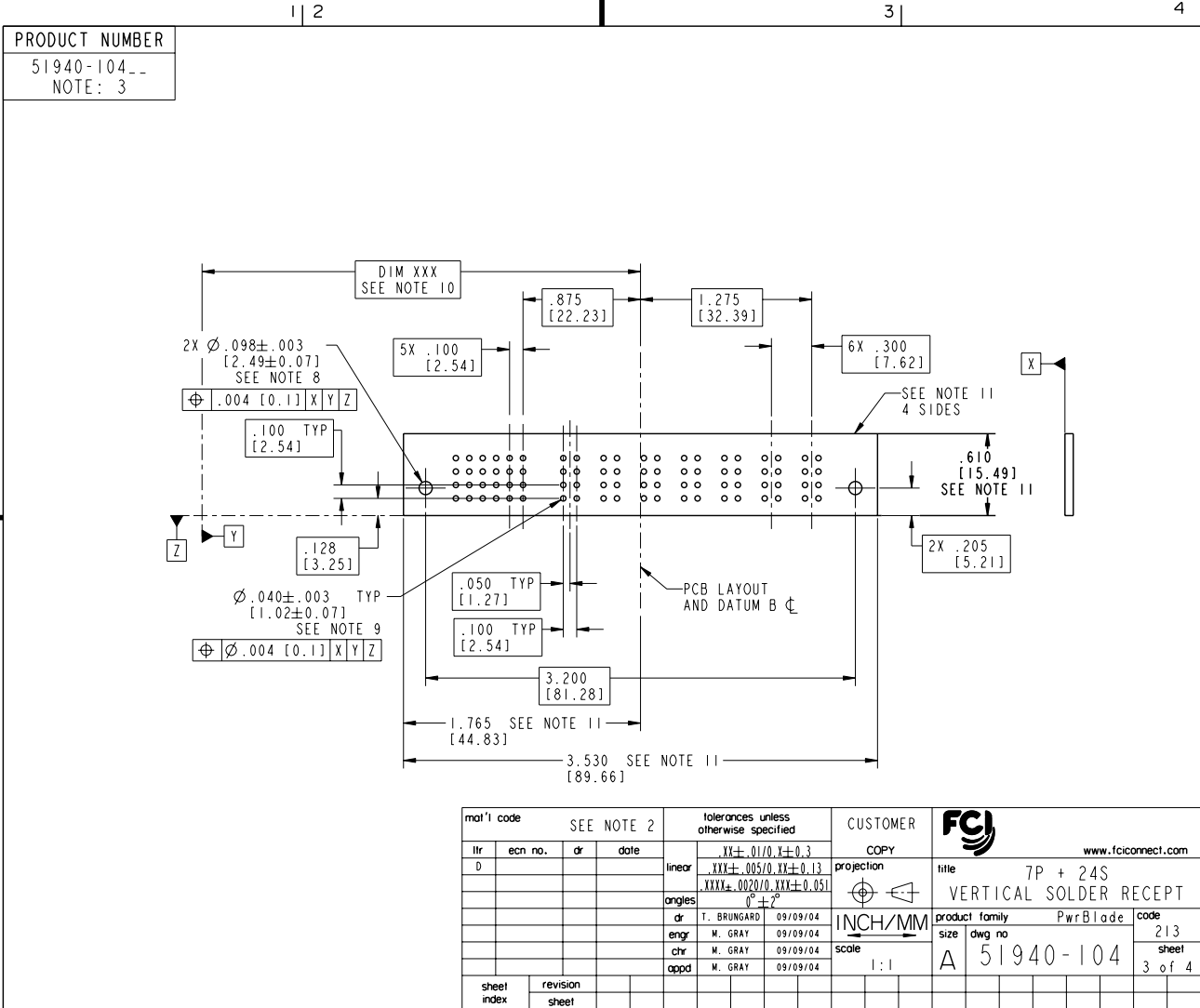
STATUS:Released

Printed: Dec 20, 2010

Tous droits strictement réservés. Reproduction ou communication, o des liens interdite sous quelque forme que ce soit sans autorisation écrite du propriétaire. Propriété de c FCI. Droits de reproduction FCI.



All rights strictly reserved. Reproduction or issue to third parties in any form whatever is not permitted without written authority from the proprietor. Property of FCI. Copyright FCI.



Pro/E

cage code 22526

PDM: Rev:D

STATUS:Released

Printed: Dec 20, 2010

Tous droits strictement réservés. Reproduction ou communication, o des tiers interdite sous quelque forme que ce soit sans autorisation écrite du propriétaire. Propriété de c FCI. Droits de reproduction FCI.

All rights strictly reserved. Reproduction or issue to third parties in any form whatever is not permitted without written authority from the proprietor. Property of FCI. Copyright FCI.

| | | | | | | | | | |
|--|----------------|----|------|----------------------------------|------------|------|--|------------------------------------|--|
| | 1 2 | 3 | 4 | | | | | | |
| PRODUCT NUMBER | | | | | | | | | |
| 51940-104_ | | | | | | | | | |
| NOTE: 3 | | | | | | | | | |
| NOTES: | | | | | | | | | |
| 1. DIMENSIONS AND TOLERANCES ARE IN ACCORDANCE WITH ASME Y14.5M, 1994 UNLESS OTHERWISE SPECIFIED. | | | | | | | | | |
| CONNECTOR NOTES: | | | | | | | | | |
| ② HOUSING MATERIAL: UL 94 V-0 GLASS FILLED HIGH-TEMP THERMOPLASTIC POWER CONTACT MATERIAL: COPPER ALLOY SIGNAL PIN MATERIAL: COPPER ALLOY | | | | | | | | | |
| 3. 51940-104;51940-104LF;51940-104GLF PLATING SPEC. SEE PRINT:10064183 | | | | | | | | | |
| ④ MANUFACTURER'S NAME, P/N, AND DATE CODE TO APPEAR ON THIS SURFACE. | | | | | | | | | |
| 5. PRODUCT SPECIFICATION GS-12-149. APPLICATION SPECIFICATION BUS-20-067. | | | | | | | | | |
| 6. PACKAGED IN TRAYS. | | | | | | | | | |
| PCB NOTES: | | | | | | | | | |
| 7. ALL HOLE DIAMETERS ARE FINISHED HOLE SIZE. | | | | | | | | | |
| ⑧ MOUNTING HOLES, WHERE APPLICABLE, ARE UNPLATED. | | | | | | | | | |
| ⑨ $\varnothing .0453 \pm .0010$ [1.151 \pm 0.025] DRILLED HOLES PLATED WITH .0003 [0.008] MIN SnPb OVER .001 [0.03] TO .003 [0.08] Cu PLATING TO ACHIEVE $\varnothing .040 \pm .003$ [1.02 \pm .07] HOLE. | | | | | | | | | |
| ⑩ "DIM XXX" TO BE DETERMINED BY THE CUSTOMER. | | | | | | | | | |
| ⑪ CONNECTOR KEEP-OUT ZONE. | | | | | | | | | |
| mat'l code SEE NOTE 2 tolerances unless otherwise specified CUSTOMER www.fciconnect.com | | | | | | | | | |
| lfr | ecn no. | dr | date | linear | projection | COPY | | title | |
| D | | | | $.XX \pm .01/0.X \pm 0.3$ | | | | 7P + 24S | |
| | | | | $.XXX \pm .005/0.XX \pm 0.13$ | | | | VERTICAL SOLDER RECEPT | |
| | | | | $.XXXX \pm .0020/0.XX \pm 0.051$ | | | | product family PwrBlade code 213 | |
| | | | | angles $0^\circ \pm 2^\circ$ | | | | size dwg no 51940-104 sheet 4 of 4 | |
| | | | | dr T. BRUNGARD 09/09/04 | INCH/MM | | | | |
| | | | | engr M. GRAY 09/09/04 | scale | | | | |
| | | | | chr M. GRAY 09/09/04 | 1:1 | | | | |
| | | | | appd M. GRAY 09/09/04 | | | | | |
| sheet index | revision sheet | | | | | | | cage code 22526 | |

Pro/E

PDM: Rev:D

STATUS: **Released**

Printed: Dec 20, 2010