

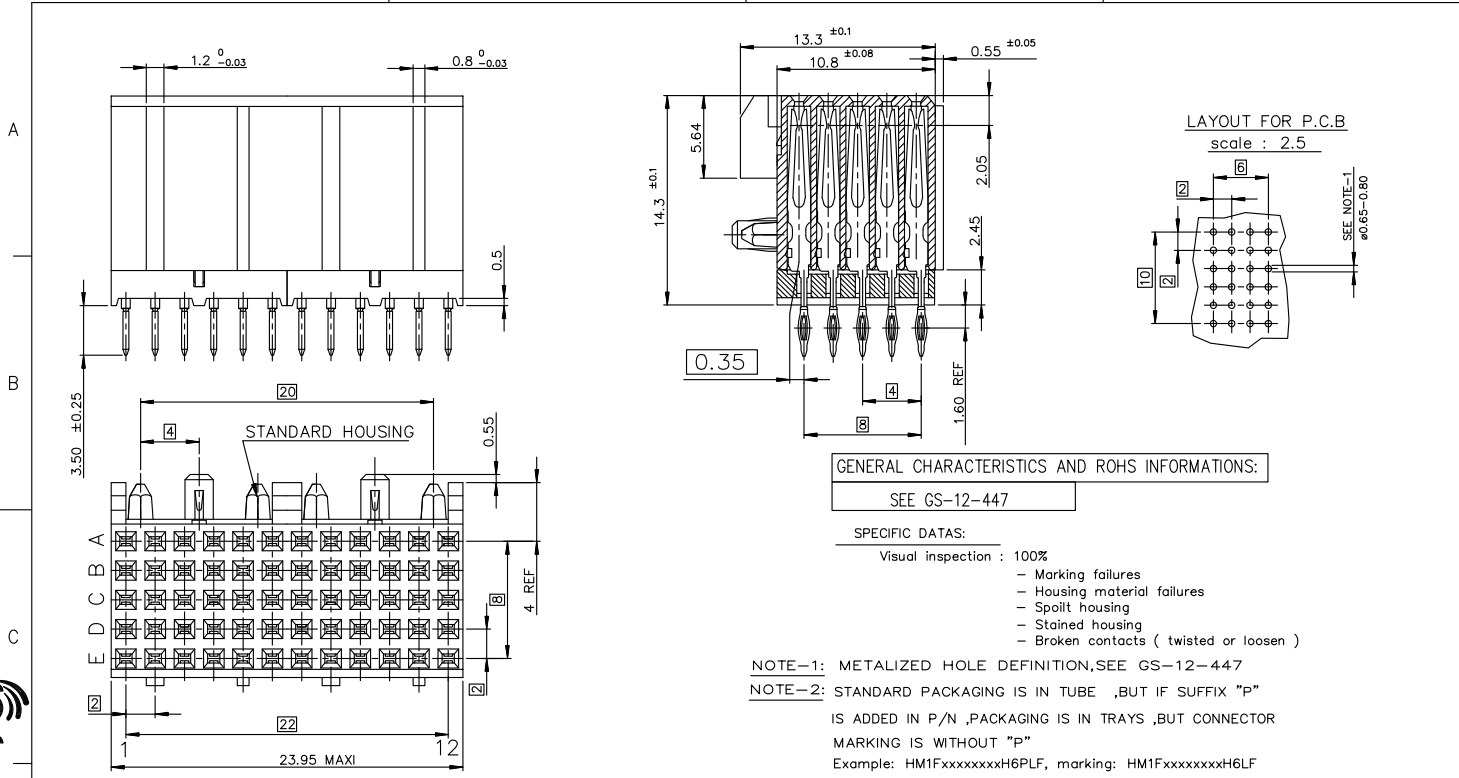
## Excellent Integrated System Limited

Stocking Distributor

Click to view price, real time Inventory, Delivery & Lifecycle Information:

[FCI](#)  
[HM1S52FER400H6PLF](#)

For any questions, you can email us directly:  
[sales@integrated-circuit.com](mailto:sales@integrated-circuit.com)



GENERAL CHARACTERISTICS AND ROHS INFORMATIONS:  
 SEE GS-12-447

- SPECIFIC DATAS:
- Visual inspection : 100%
  - Marking failures
  - Housing material failures
  - Spilt housing
  - Stained housing
  - Broken contacts ( twisted or loosen )

NOTE-1: METALIZED HOLE DEFINITION,SEE GS-12-447  
 NOTE-2: STANDARD PACKAGING IS IN TUBE ,BUT IF SUFFIX "P"  
 IS ADDED IN P/N ,PACKAGING IS IN TRAYS ,BUT CONNECTOR  
 MARKING IS WITHOUT "P"  
 Example: HM1FxxxxxxxH6PLF, marking: HM1FxxxxxxxH6LF

PART NUMBER  $\Delta$   
 HM1S52FER400H\*(LF)  
 LF = FOR LEAD FREE PRODUCT  
 PLATING CODE:  
 6 = TELCORDIA CO  
 E = CUSTOMER SPECIAL, CONTACT  
 30u" GOLD SELECTIVE PLATING.

				European Views			
www.fciconnect.com				surface ISO 1302 <input checked="" type="checkbox"/>	tolerance std ISO 406 ISO 1101	projection 	mm
				TOLERANCES UNLESS OTHERWISE SPECIFIED			
Dr	PERRICHOT	2001/01/26	ANGULAR	0.X	±0.1	size	A3
Eng	LENOIR	2001/01/26	LINEAR	0.XX	±0.1	Scale	4
Chr	LEGARE	2001/01/26	0.XX   ±2	0.XXX	±0.1	ECN	DG09-0367
Appr	LEGARE	2001/01/26	Product family		METRAL	Spec ref	-
FCI title				METRAL FEMALE 5 ROWS		Rev.	
catalog no				60 WAY PRESS-FIT		Eng	C-8626-1112
						CUSTOMER	sheet 1 of 1

rev	ecn no	dr	date
A	-	-	2001/01/26
B	LS05-004	MLE	2005/03/22
C	LS06-0092	MLE	2006/06/01
D	LS06-0159	MLE	2006/10/24
E	LS07-0268	MLE	2007/11/09
F	DG09-0367	TER	2009-11-25
-	-	-	-

Copyright FCI

REV F - 2006-04-17