

Excellent Integrated System Limited

Stocking Distributor

Click to view price, real time Inventory, Delivery & Lifecycle Information:

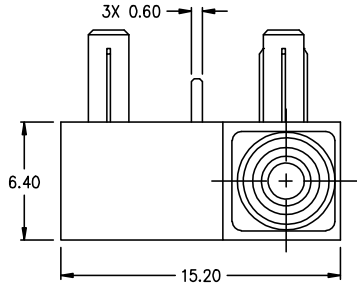
[Honeywell Sensing and Productivity Solutions](#)
[ZD30S60A05-Z](#)

For any questions, you can email us directly:

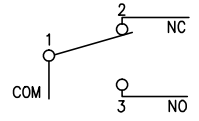
sales@integrated-circuit.com

FO-55118-B 10
HONEYWELL
PART NUMBER
ZD30S60A05-Z
PRODUCT CODE
FBY4023

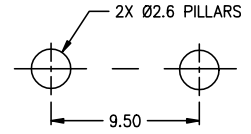
REV	DOCUMENT	CHANGED BY	CHECK
A	0077732	SBH	16JUN11
		CMH	



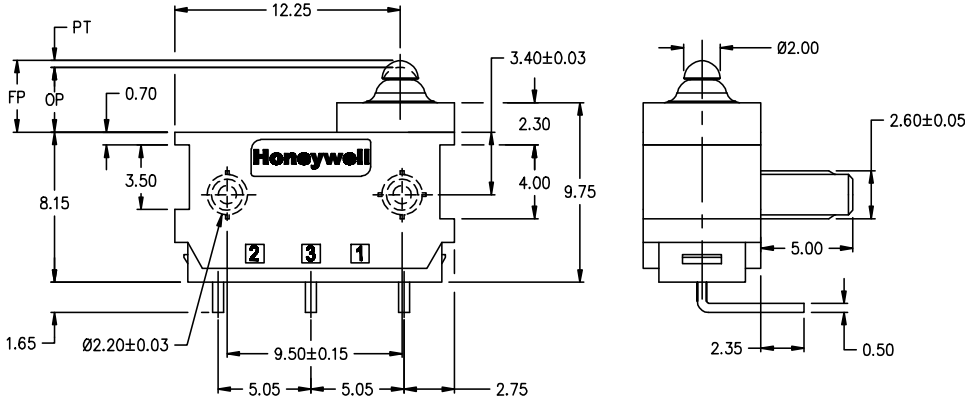
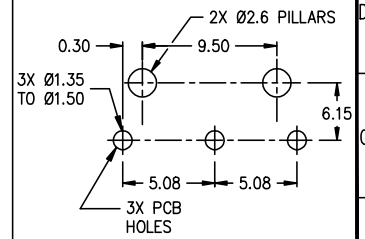
CIRCUIT DIAGRAM



MOUNTING HOLE DIMENSIONS



LEFT/RIGHT PCB TERMINALS MOUNTING HOLE



- NOTES:
 1. MOUNTING HOLES WILL ACCEPT Ø2.6 MAX PINS.
 2. SWITCH PROTECTION IS IP67 IF EXCLUDE THE TERMINALS.

CHARACTERISTICS OPERATING FORCE: 130gf MAX. DIFFERENTIAL FORCE: 15gf MIN. RELEASE FORCE: 15gf MIN. FREE POSITION: 6.85±0.2MM OPERATING POSITION: 0.8MM MAX PRE-TRAVEL: 0.2MM MAX DIFFERENTIAL TRAVEL: 0.8MM MIN. OVER-TRAVEL: 0.8MM MIN. FULL OVERTRAVEL FORCE:		ELECTRICAL DATA CONTACT ARRANGEMENT: S.P.D.T. PROTECTION: IP00 (SEE NOTE 2) RATINGS 0.1A 48VDC 125/250VAC 3A 12VDC µ 40T85 1E5 0.1A 48VDC 125/250VAC 3A 12VDC		DESIGN UNITS: MM TOLERANCES UNLESS NOTED: NO PLACES X ± - ONE PLACE .X ± - TWO PLACE .XX ± 0.40 THREE PLACE .XXX ± - ANGLES X ± 2'		DRAWN: SBH 25MAY11 CHECK: PJ 25MAY11 THIS DRAWING COVERS A PROPRIETARY ITEM AND IS THE PROPERTY OF HONEYWELL. THIS DRAWING IS NOT TO BE COPIED OR USED WITHOUT THE PERMISSION OF HONEYWELL. INTERPRET PER ASME Y14.5M-1994 OTHER HONEYWELL ENGINEERING STANDARDS MAY APPLY AUTOCAD 2D		Honeywell TITLE: SWITCH - BASIC SIZE: A3 TYPE: I CAGE CODE: - DRAWING NAME: ZD30S60A05-Z SCALE: NONE SHEET: 1 OF 1	
---	--	---	--	---	--	---	--	--	--

10 9 8 7 6 5 4 3 2 1