

## Excellent Integrated System Limited

Stocking Distributor

Click to view price, real time Inventory, Delivery & Lifecycle Information:

[Phoenix Contact](#)  
[1762046](#)

For any questions, you can email us directly:

[sales@integrated-circuit.com](mailto:sales@integrated-circuit.com)

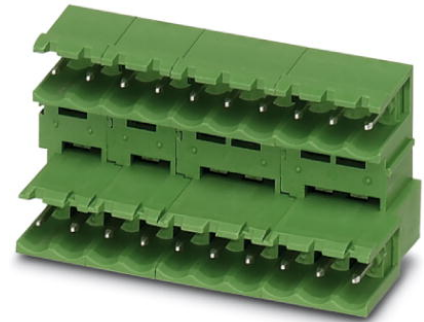


Extract from the online catalog

## MDSTB 2,5/ 2-G

Order No.: 1762046

The figure shows a 10-position version of the product



<http://eshop.phoenixcontact.de/phoenix/treeViewClick.do?UID=1762046>

Header, Nominal current: 10 A, Nom. voltage: 250 V, Pitch: 5 mm,  
 Number of positions: 2, Color: green, Assembly: Soldering

### Commercial data

EAN	4017918030964
Pack	50 pcs.
Customs tariff	85366990
Weight/Piece	0.00345 KG
Catalog page information	Page 258 (CC-2009)

### Product notes

WEEE/RoHS-compliant since:  
 01/01/2003



<http://www.download.phoenixcontact.com>  
 Please note that the data given here has been taken from the online catalog. For comprehensive information and data, please refer to the user documentation. The General Terms and Conditions of Use apply to Internet downloads.

### Technical data

#### Dimensions / positions

Pitch	5 mm
Dimension a	5 mm
Number of positions	2
Pin dimensions	1 x 1 mm
Hole diameter	1.4 mm

MDSTB 2,5/ 2-G Order No.: 1762046  
<http://eshop.phoenixcontact.de/phoenix/treeViewClick.do?UID=1762046>

**Technical data**

Insulating material group	I
Rated surge voltage (III/3)	4 kV
Rated surge voltage (III/2)	4 kV
Rated surge voltage (II/2)	4 kV
Rated voltage (III/2)	320 V
Rated voltage (II/2)	400 V
Connection in acc. with standard	EN-VDE
Nominal current $I_N$	10 A
Nominal voltage $U_N$	250 V
Maximum load current	10 A
Insulating material	PBT
Inflammability class acc. to UL 94	V0

**Certificates / Approvals**



Certification CB, CSA, CUL, GOST, UL, VDE-PZI

**CSA**

Nominal voltage $U_N$	300 V
Nominal current $I_N$	10 A

**CUL**

Nominal voltage $U_N$	300 V
Nominal current $I_N$	10 A

**UL**

Nominal voltage $U_N$	300 V
Nominal current $I_N$	10 A

**Accessories**

Item	Designation	Description
------	-------------	-------------

**Assembly**

1806588	MDSTB 2,5-AS	Ejectors, for assembly on each side of the header
---------	--------------	---

MDSTB 2,5/ 2-G Order No.: 1762046

<http://eshop.phoenixcontact.de/phoenix/treeViewClick.do?UID=1762046>

1786679	MDSTB-SE	Side element, for lateral sealing of MSTB headers, 2.54 mm thick, color: green
1755477	MSTB-BL	Keying cap, for forming sections, plugs onto header pin, green insulating material

**General**

1736771	MDSTB 2,5/ 2-GFL-5,08	Header, Nominal current: 10 A, Nom. voltage: 250 V, Pitch: 5.08 mm, Number of positions: 2, Color: green, Assembly: Soldering
1736768	MDSTB 2,5/ 2-GFR-5,08	Header, Nominal current: 10 A, Nom. voltage: 250 V, Pitch: 5.08 mm, Number of positions: 2, Color: green, Assembly: Soldering

**Marking**

0804183	SK 5/3,8:FORTL.ZAHLEN	Marker card, printed horizontally, self-adhesive, 12 identical decades marked 1-10, 11-20 etc. up to 91-(99)100, sufficient for 120 terminal blocks
---------	-----------------------	---

**Plug/Adapter**

1734401	CR-MSTB	Coding section, inserted into the recess in the header or the inverted plug, red insulating material
---------	---------	--

**Additional products**

Item	Designation	Description
------	-------------	-------------

**Assembly**

1909210	FKCT 2,5/ 2-ST	Plug component, Nominal current: 12 A, Nom. voltage: 250 V, Pitch: 5 mm, Number of positions: 2, Connection type: Spring-cage conn., Color: green
---------	----------------	---

**General**

1910351	FKC 2,5/ 2-ST	Plug component, Nominal current: 12 A, Nom. voltage: 250 V, Pitch: 5 mm, Number of positions: 2, Connection type: Spring-cage conn., Color: green
1910526	FKC 2,5/ 2-STF	Plug component, Nominal current: 12 A, Nom. voltage: 250 V, Pitch: 5 mm, Number of positions: 2, Connection type: Spring-cage conn., Color: green
1909401	FKCT 2,5/ 2-STF	Plug component, Nominal current: 12 A, Nom. voltage: 250 V, Pitch: 5 mm, Number of positions: 2, Connection type: Spring-cage conn., Color: green
1909715	FKCVR 2,5/ 2-ST	Plug component, Nominal current: 12 A, Nom. voltage: 250 V, Pitch: 5 mm, Number of positions: 2, Connection type: Spring-cage conn., Color: green
1909883	FKCVR 2,5/ 2-STF	Plug component, Nominal current: 12 A, Nom. voltage: 250 V, Pitch: 5 mm, Number of positions: 2, Connection type: Spring-cage conn., Color: green

**MDSTB 2,5/ 2-G** Order No.: 1762046

<http://eshop.phoenixcontact.de/phoenix/treeViewClick.do?UID=1762046>

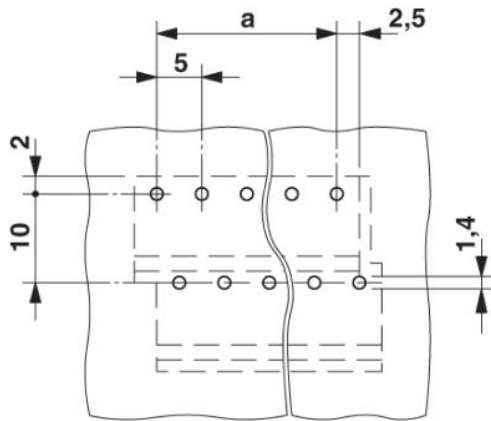
1910034	FKCVW 2,5/ 2-ST	Plug component, Nominal current: 12 A, Nom. voltage: 250 V, Pitch: 5 mm, Number of positions: 2, Connection type: Spring-cage conn.
1910209	FKCVW 2,5/ 2-STF	Plug component, Nominal current: 12 A, Nom. voltage: 250 V, Pitch: 5 mm, Number of positions: 2, Connection type: Spring-cage conn.
1779411	FRONT-MSTB 2,5/ 2-ST	Plug component, Nominal current: 12 A, Nom. voltage: 250 V, Pitch: 5 mm, Number of positions: 2, Connection type: Screw connection, Color: green
1779644	FRONT-MSTB 2,5/ 2-STF	Plug component, Nominal current: 12 A, Nom. voltage: 250 V, Pitch: 5 mm, Number of positions: 2, Connection type: Screw connection, Color: green
1754449	MSTB 2,5/ 2-ST	Plug component, Nominal current: 12 A, Nom. voltage: 250 V, Pitch: 5 mm, Number of positions: 2, Connection type: Screw connection, Color: green
1786831	MSTB 2,5/ 2-STF	Plug component, Nominal current: 12 A, Nom. voltage: 250 V, Pitch: 5 mm, Number of positions: 2, Connection type: Screw connection, Color: green
1765771	MSTBP 2,5/ 2-ST	Plug component, Nominal current: 12 A, Nom. voltage: 250 V, Pitch: 5 mm, Number of positions: 2, Connection type: Screw connection, Color: green
1779835	MSTBT 2,5/ 2-ST	Plug component, Nominal current: 12 A, Nom. voltage: 250 V, Pitch: 5 mm, Number of positions: 2, Connection type: Screw connection, Color: green
1792016	MVSTBR 2,5/ 2-ST	Plug component, Nominal current: 12 A, Nom. voltage: 250 V, Pitch: 5 mm, Number of positions: 2, Connection type: Screw connection, Color: green
1835478	MVSTBR 2,5/ 2-STF	Plug component, Nominal current: 12 A, Nom. voltage: 250 V, Pitch: 5 mm, Number of positions: 2, Connection type: Screw connection, Color: green
1792524	MVSTBW 2,5/ 2-ST	Plug component, Nominal current: 12 A, Nom. voltage: 250 V, Pitch: 5 mm, Number of positions: 2, Connection type: Screw connection, Color: green
1835287	MVSTBW 2,5/ 2-STF	Plug component, Nominal current: 12 A, Nom. voltage: 250 V, Pitch: 5 mm, Number of positions: 2, Connection type: Screw connection, Color: green
1768765	SMSTB 2,5/ 2-ST	Plug component, Nominal current: 12 A, Nom. voltage: 250 V, Pitch: 5 mm, Number of positions: 2, Connection type: Screw connection, Color: green

MDSTB 2,5/ 2-G Order No.: 1762046

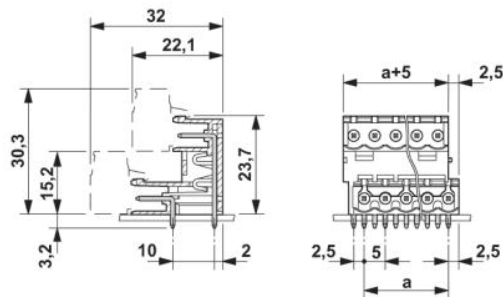
<http://eshop.phoenixcontact.de/phoenix/treeViewClick.do?UID=1762046>

**Diagrams/Drawings**

Drilling plan/solder pad geometry



Dimensioned drawing



MDSTB 2,5/ 2-G Order No.: 1762046

<http://eshop.phoenixcontact.de/phoenix/treeViewClick.do?UID=1762046>

---

**Address**

PHOENIX CONTACT Inc., USA  
586 Fulling Mill Road  
Middletown, PA 17057, USA  
Phone (800) 888-7388  
Fax (717) 944-1625  
<http://www.phoenixcon.com>



© 2010 Phoenix Contact  
Technical modifications reserved;