



**Distributor of Molex Connector Corporation: Excellent Integrated System Limited**  
Datasheet of 87340-0822 - Connector Receptacle 8 Position 0.079" (2.00mm) Gold Surface  
Mount

Contact us: [sales@integrated-circuit.com](mailto:sales@integrated-circuit.com) Website: [www.integrated-circuit.com](http://www.integrated-circuit.com)

---

## **Excellent Integrated System Limited**

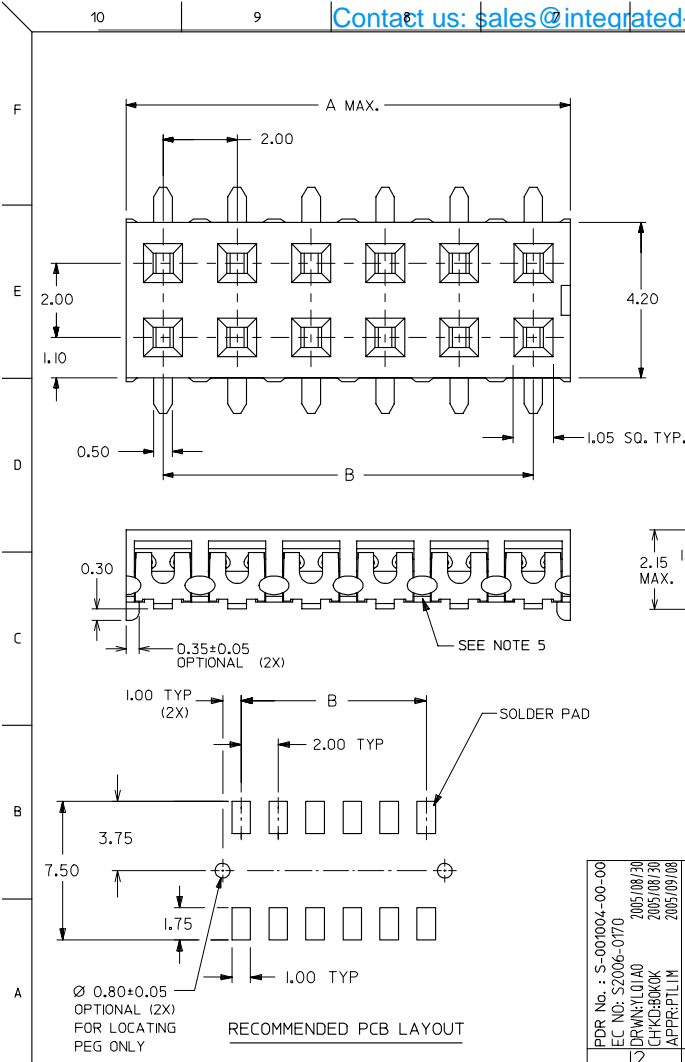
Stocking Distributor

Click to view price, real time Inventory, Delivery & Lifecycle Information:

[Molex Connector Corporation](#)  
[87340-0822](#)

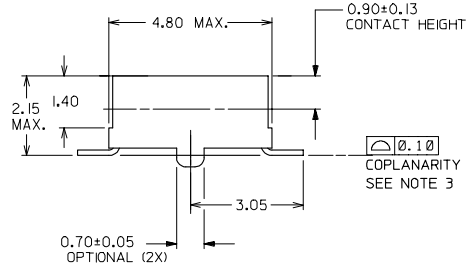
For any questions, you can email us directly:  
[sales@integrated-circuit.com](mailto:sales@integrated-circuit.com)

Contact us: [sales@integrated-circuit.com](mailto:sales@integrated-circuit.com) Website: [www.integrated-circuit.com](http://www.integrated-circuit.com)



- NOTES:
- 12 CIRCUIT SIZE SHOWN FOR ILLUSTRATION ONLY. SEE CHART FOR AVAILABLE PART SIZES.
  - PLATING FINISH:
    - 1 - 0.76µm/30µin MIN. GOLD IN CONTACT AREA  
1.90µm/75µin MIN. TIN/LEAD IN SOLDER TAIL AREA  
BOTH OVER 1.30µm/50µin MIN. NICKEL OVERALL
    - 2 - 0.38µm/15µin MIN. GOLD IN CONTACT AREA  
1.90µm/75µin MIN. TIN/LEAD IN SOLDER TAIL AREA  
BOTH OVER 1.30µm/50µin MIN. NICKEL OVERALL
    - 3 - 0.76µm/30µin MIN. GOLD IN CONTACT AREA  
1.90µm/75µin MIN. TIN IN SOLDER TAIL AREA  
BOTH OVER 1.30µm/50µin MIN. NICKEL OVERALL
    - 4 - 0.38µm/15µin MIN. GOLD IN CONTACT AREA  
1.90µm/75µin MIN. TIN IN SOLDER TAIL AREA  
BOTH OVER 1.30µm/50µin MIN. NICKEL OVERALL
  3. COPLANARITY OF SOLDER TAIL IS TO BE MEASURED BY RESTING THE PART ON A FLAT GAUGE SURFACE.
  4. PRODUCT SPECIFICATION PS-87340 APPLIES.
  5. THIS AREA OF PART TO BE HEAT STAKED TO RETAIN CONTACTS.
  6. PART IS MATEABLE TO ALL MILLI-GRID HEADERS WITH MINIMUM PIN LENGTHS OF 1.90mm FOR TOP ENTRY.

PART NO. IN TUBE	CKT. SIZE	DIM. B	DIM. A
87340-04**	4	2.00	4.00
87340-06**	6	4.00	6.00
87340-08**	8	6.00	8.00
87340-10**	10	8.00	10.00
87340-12**	12	10.00	12.00
87340-14**	14	12.00	14.00
87340-16**	16	14.00	16.00
87340-18**	18	16.00	18.00
87340-20**	20	18.00	20.00

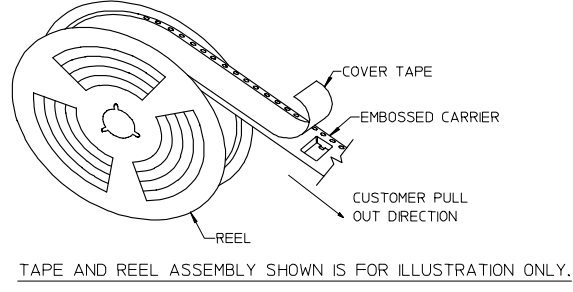
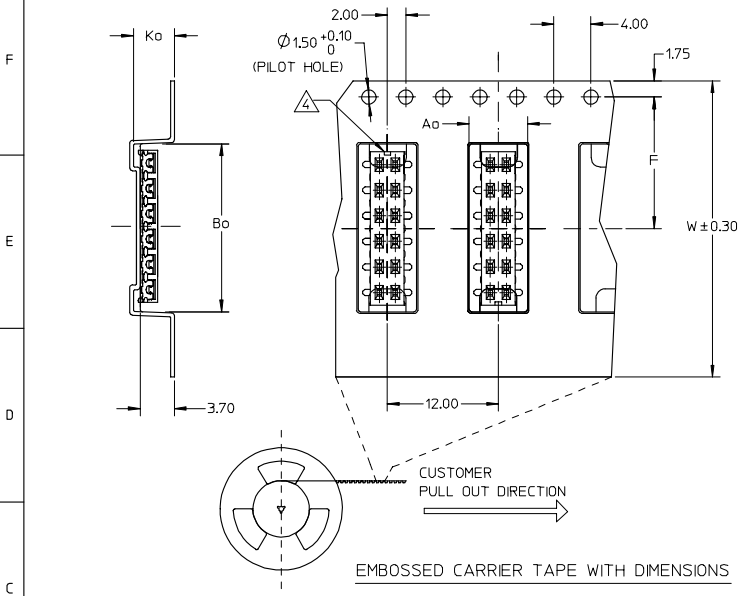


**PART NO. LEGEND**  
87340 - \* \* \* \*  
CIRCUIT SIZE     PLATING  
1 - WITHOUT LOCATING PEGS (HOUSING - BLACK)     1  
2 - WITH LOCATING PEGS (HOUSING - BLACK)     2 (SEE NOTE 2)  
5 - WITHOUT LOCATING PEGS (HOUSING - NATURAL)     3  
6 - WITH LOCATING PEGS (HOUSING - NATURAL)     4

PDR No. : S-001004-00-00 EC NO. : S2006-0170 DRAWN BY : DRWYLO1AD CHECKED BY : CHKDBK0K APPROVED BY : APPRPL1IM 2005/08/20 2005/08/20 2005/09/08	QUALITY SYMBOLS ▽=0 ▽=0	GENERAL TOLERANCES (UNLESS SPECIFIED)		DIMENSION STYLE MM ONLY	SCALE NTS	DESIGN UNITS METRIC	THIRD ANGLE PROJECTION		
		4 PLACES ± --- ± --- 3 PLACES ± --- ± --- 2 PLACES ± 0.20 ± --- 1 PLACE ± --- ± ---	mm     INCH	DRAWN BY JKACHL I	DATE 1991/07/02	TITLE SALES DRAWING MGRID, VLPR II, DUAL ROW 2MM, T/ENTRY RECEPT, SMT			
		ANGULAR ± 3 °		CHECKED BY JNG	DATE 1991/07/09	MOLEX INCORPORATED			
		DRAFT WHERE APPLICABLE MUST REMAIN WITHIN DIMENSIONS		APPROVED BY YTYAP	DATE 1991/07/09	MATERIAL NO. SEE TABLE	DOCUMENT NO. SD-87340-**01	SHEET NO. 1 OF 2	

Contact us: [sales@integrated-circuit.com](mailto:sales@integrated-circuit.com) Website: [www.integrated-circuit.com](http://www.integrated-circuit.com)

PART NO. IN TUBE	PART NO. TAPE/REEL	CKT SIZE	PLATING OPTION	Ao	Bo	F	W	Ko
87340-1014	87340-1019	10	TIN	6.70	10.40	11.50	24.00	5.30
87340-1613	87340-1618	16	TIN	6.60	16.30	11.50	24.00	4.40



TAPE AND REEL ASSEMBLY SHOWN IS FOR ILLUSTRATION ONLY.

**NOTES:**

- LEADER AND TRAILER TAPE
- PEELING OFF FORCE OF THE TOP TAPE: 20-80gf.  
 (PEELING DIRECTION AS SHOWN IN FOLLOWING FIGURE)
- PACKAGING STANDARD IS AS PER EIA-481.
- NO FIX ORIENTATION OF ASSEMBLY PART IN T&R.
- TAPE & REEL QUANTITY : 1000 PCS / REEL

PDR No. : S-001004-00-00 EC NO. : S2006-0170 DRAWN BY : DRWNYL01AO CHKD BY : CHKDBK0K APPR BY : PLIM	QUALITY SYMBOLS ▽=0 ▽=0	GENERAL TOLERANCES (UNLESS SPECIFIED)		DIMENSION STYLE MM ONLY		SCALE NTS	DESIGN UNITS METRIC	THIRD ANGLE PROJECTION	
		4 PLACES ± --- ± --- 3 PLACES ± --- ± --- 2 PLACES ± 0.20 ± --- 1 PLACE ± --- ± ---	mm INCH	DRAWN BY JKACHL I	DATE 1991/07/02	TITLE SALES DRAWING MGRID, VLPR II, DUAL ROW 2MM, T/ENTRY RECEPT, SMT			
		ANGULAR ± 3 °		CHECKED BY JNG	DATE 1991/07/09	MOLEX INCORPORATED			
		DRAFT WHERE APPLICABLE MUST REMAIN WITHIN DIMENSIONS		APPROVED BY YTYAP	DATE 1991/07/09	MATERIAL NO. SEE TABLE	DOCUMENT NO. SD-87340-**01	SHEET NO. 2 OF 2	