

Excellent Integrated System Limited

Stocking Distributor

Click to view price, real time Inventory, Delivery & Lifecycle Information:

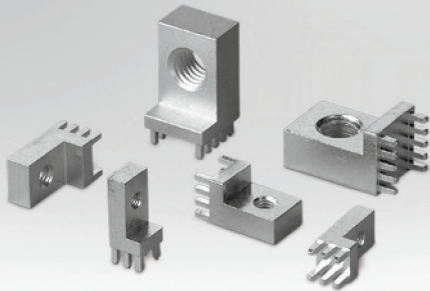
[Wurth Electronics Inc](#)
[7461101](#)

For any questions, you can email us directly:

sales@integrated-circuit.com

Power Elements 90°

with two Rows Pin-Plate



Characteristics

- Prepared hole diameter: 1.60 mm
- Final hole diameter for HAL surface: 1.45 mm ±0.05 mm
- Final diameter for chemical surfaces (e.g. tin): 1.475 mm ±0.05 mm
- Available with hole or threads

Dimensions (mm)

Power Elements									
Order Code	Four corners a (mm)	b (mm)	c (mm)	d (mm)	e	f	g	Pins	Format Type
746 110 1	7	17.5	3.5	4	M 3	3	5	6	A
746 106 2	7	17.5	3.5	4	Ø 3.2	3	5	6	A
746 106 3	9	17.5	3.5	5	M 4	3	5	8	B
746 110 2	9	17.5	3.5	5	Ø 4.2	3	5	8	B
746 110 3	9	17.5	3.5	5	M 5	3	5	8	B
746 110 4	9	17.5	3.5	5	Ø 5.2	3	5	8	B
746 110 6	13	23.5	3.5	8	M 6	3	8	10	C
746 110 7	13	23.5	3.5	8	Ø 6.2	3	8	10	C
746 110 8	13	23.5	3.5	8	M 8	3	8	10	C
746 106 4	13	23.5	3.5	8	Ø 8.2	3	8	10	C
746 106 5	16	28.5	3.5	10	M 10	3	10	12	D
746 110 9	16	28.5	3.5	10	Ø 10.2	3	10	12	D

Note: Space must be given if PCB tracks fall between rows of pins.

Dimensions

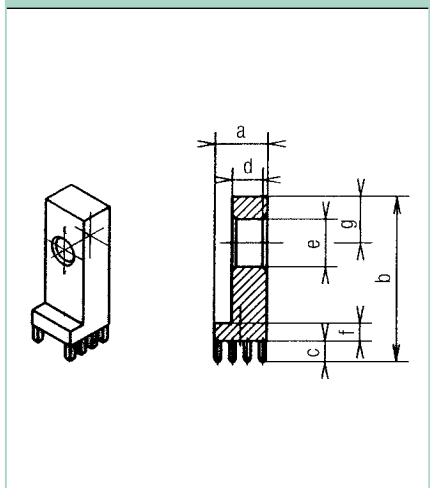


Illustration of hole A

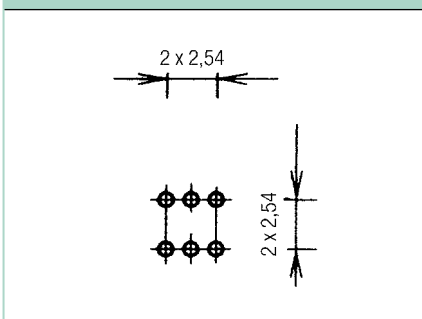


Illustration of hole B

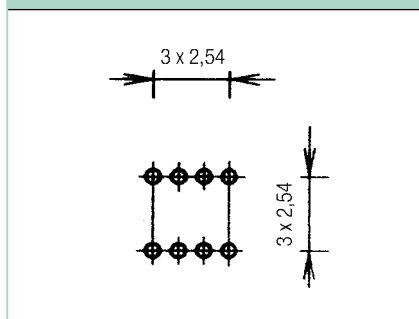


Illustration of hole C

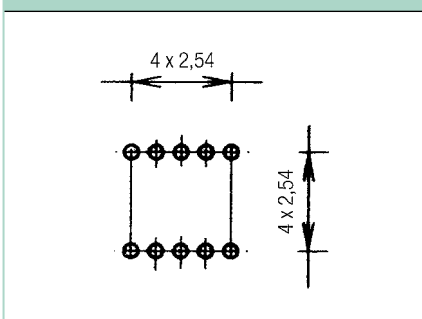


Illustration of hole D

