

Excellent Integrated System Limited

Stocking Distributor

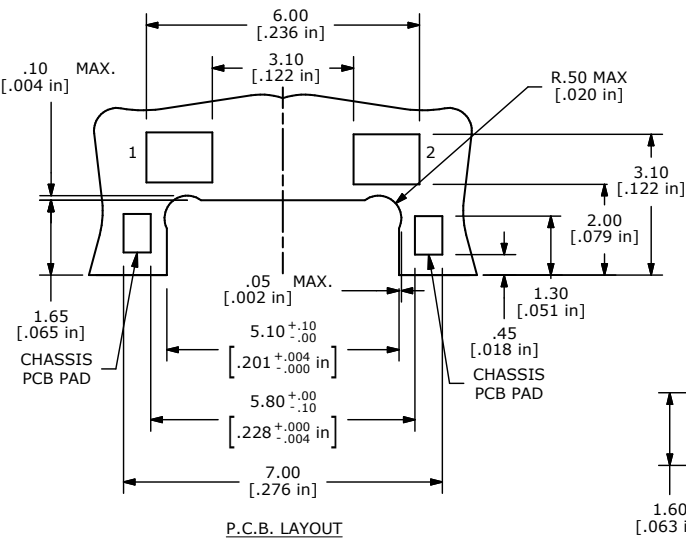
Click to view price, real time Inventory, Delivery & Lifecycle Information:

[E-Switch](#)
[TL4100AF120QG](#)

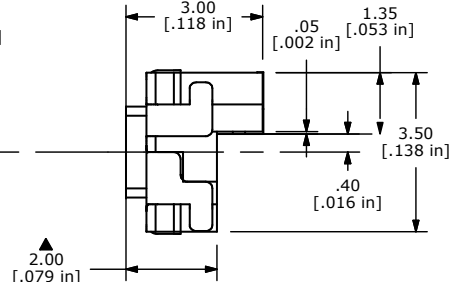
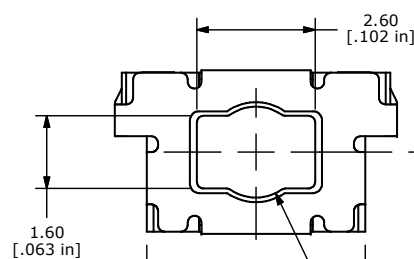
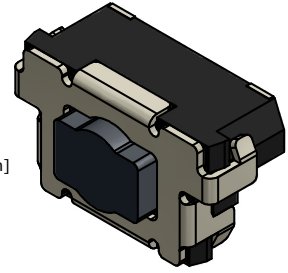
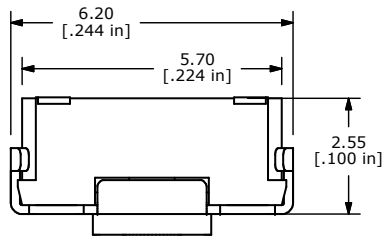
For any questions, you can email us directly:

sales@integrated-circuit.com

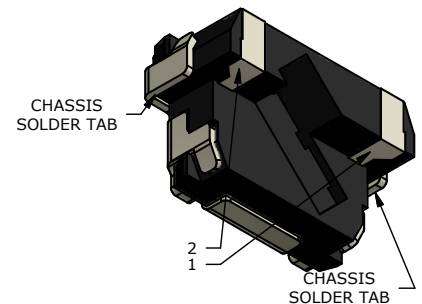
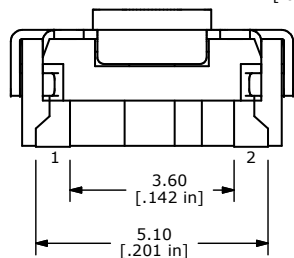
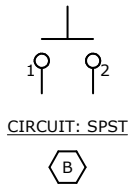
SHEET 1 OF 1



P.C.B. LAYOUT



- NOTES
1. ALL DIMENSIONS IN MM [INCH]
 2. GENERAL TOLERANCE: X.X=±0.4
X.XX=±0.25
 3. TERMINAL NUMBERS FOR REF. ONLY.
 - ▲ 4. OPERATING FORCE: 120±50gf
 5. OPERATING LIFE: 1,000,000 CYCLES
 6. TRAVEL: 0.15±0.1mm
 - ▲ 7. CONTACT RATING: 12 VDC, 50mA
 8. CONTACT RESISTANCE: 100m Ω MAX INITIAL
 9. INSULATION RESISTANCE: 100M Ω MIN. @ 500 VDC
 10. BOUNCE MAX: 10m SEC MAX
 11. DIELECTRIC STRENGTH: 250 VAC FOR 1 MINUTE
 12. OPERATING TEMPERATURE: -40°C TO 85°C
 13. STORAGE TEMPERATURE: -40°C TO 85°C
 14. PACKAGING: REEL 2000 PCS. PER
 15. ▲ DENOTES CRITICAL PARAMETER
 16. 2002/95/EC (ROHS) COMPLIANT



B	20956	ADD CIRCUIT SCHEMATIC	1/8/13	EBP
A	19858	RELEASE TO PRODUCTION	04/18/11	RC
REV	PCR NO	DESCRIPTION	DATE	BY

THE INFORMATION CONTAINED IN THIS DOCUMENT IS PROPRIETARY TO E-SWITCH AND IS NOT TO BE COPIED OR TRANSFERRED

TITLE TL4100AF120QG				
SCALE 8 = 1	DATE 4/18/2011	DR RC	DWG P004000	REV B