

Excellent Integrated System Limited

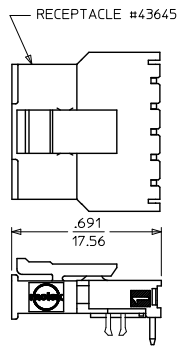
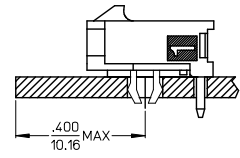
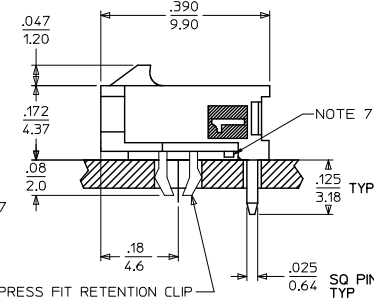
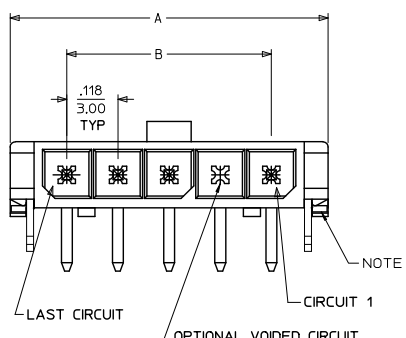
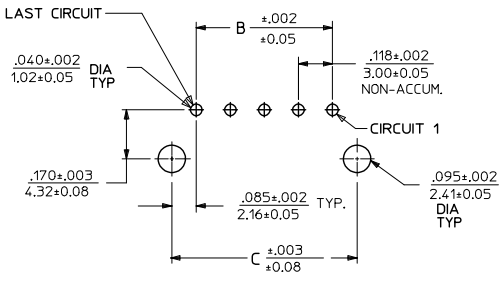
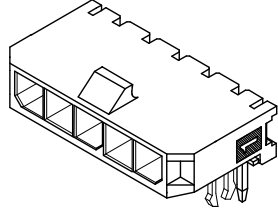
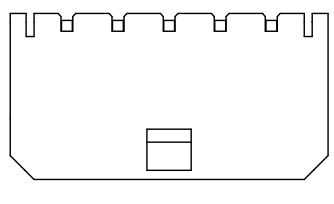
Stocking Distributor

Click to view price, real time Inventory, Delivery & Lifecycle Information:

[Molex Connector Corporation](#)
[0436500504](#)

For any questions, you can email us directly:
sales@integrated-circuit.com

| CKTS | DIM A | DIM B | DIM C |
|------|----------------|----------------|----------------|
| 2 | .380 9.65 | .118 3.00 | .287 7.30 |
| 3 | .498 12.65 | .236 6.00 | .405 10.30 |
| 4 | .616 15.65 | .354 9.00 | .524 13.30 |
| 5 | .734 18.64 | .472 12.00 | .642 16.30 |
| 6 | .852 21.64 | .591 15.00 | .760 19.30 |
| 7 | .970 24.64 | .709 18.00 | .878 22.30 |
| 8 | 1.088 27.64 | .827 21.00 | .996 25.30 |
| 9 | 1.206 30.63 | .945 24.00 | 1.114 28.30 |
| 10 | 1.325 33.66 | 1.063 27.00 | 1.232 31.30 |
| 11 | 1.443 36.65 | 1.181 30.00 | 1.350 34.30 |
| 12 | 1.561 39.65 | 1.299 33.00 | 1.469 37.30 |



- NOTES:
- HOUSING MATERIAL: LIQUID CRYSTAL POLYMER, GLASS FILLED, UL94V-0, COLOR: BLACK
TERMINAL MATERIAL: BRASS ALLOY
 - FINISH:
A = .000060/(0.00152) MIN. REFLOWED MATTE TIN OVER .000050/(0.00127) MIN. NICKEL OVERALL (FINISH IS BRIGHT IN APPEARANCE, THICKNESS AS APPLIED PRIOR TO REFLOW)
B = .000015/(0.00038) MIN. SELECT GOLD IN CONTACT AREA
.000100/(0.00254) MIN. SELECT MATTE TIN ON SOLDER TAILS BOTH OVER .000050/(0.00127) MIN. NICKEL OVERALL
C = .000030/(0.00076) MIN. SELECT GOLD IN CONTACT AREA
.000100/(0.00254) MIN. SELECT MATTE TIN ON SOLDER TAILS BOTH OVER .000050/(0.00127) MIN. NICKEL OVERALL
D = .000100/(0.00254) MIN. MATTE TIN OVER .000050/(0.00127) MIN. NICKEL OVERALL
 - PRODUCT SPECIFICATION: PS-43650
 - TRAY PACKAGED : SEE MOLEX DRAWING PK-70873-0321
 - MATES WITH MICRO FIT (3.0) RECEPTACLE SERIES 43645
 - TO AVOID INTERFERENCE BETWEEN RECEPTACLE AND PCB, HEADER MUST BE PLACED WITHIN .400/(10.16) MAX. FROM EDGE OF PCB, AS SHOWN IN LOCATION DETAIL.
 - METAL TAB MAY BE FLUSH WITH PCB.
 - PART CONFORMS TO CLASS 'B' REQUIREMENTS OF COSMETIC SPECIFICATION' PS-45499-002.

| CKTS | FINISH A | | FINISH B | | FINISH C | | FINISH D | |
|------|--------------|----------|--------------|----------|--------------|----------|--------------|----------|
| | MATERIAL NO: | VOID CKT | MATERIAL NO: | VOID CKT | MATERIAL NO: | VOID CKT | MATERIAL NO: | VOID CKT |
| 02 | 43650-0203 | | 43650-0204 | | 43650-0205 | | 43650-0259 | |
| 03 | 43650-0303 | | 43650-0304 | | 43650-0305 | | 43650-0359 | |
| 04 | 43650-0403 | | 43650-0404 | | 43650-0405 | | 43650-0459 | |
| 05 | 43650-0503 | | 43650-0504 | | 43650-0505 | | 43650-0559 | |
| 06 | 43650-0603 | | 43650-0604 | | 43650-0605 | | 43650-0659 | |
| 07 | 43650-0703 | | 43650-0704 | | 43650-0705 | | 43650-0759 | |
| 08 | 43650-0803 | | 43650-0804 | | 43650-0805 | | 43650-0859 | |
| 09 | 43650-0903 | | 43650-0904 | | 43650-0905 | | 43650-0959 | |
| 10 | 43650-1003 | | 43650-1004 | | 43650-1005 | | 43650-1059 | |
| 11 | 43650-1103 | | 43650-1104 | | 43650-1105 | | 43650-1159 | |
| 12 | 43650-1203 | | 43650-1204 | | 43650-1205 | | 43650-1259 | |
| 07 | 43650-1703 | 05 | | | | | 43650-1759 | 05 |

| | | | | | | | | | |
|--|--------------------------------------|--|---|--|---|---------------------------|------------------------------|---------------------|--|
| REVISE FINISH A REC NO: UCP2016-2546 DRAWN BY: J. W. B. / 2016/01/28 CHKD: J. FOX / 2016/01/28 APPR: S. M. TH / 2016/03/18 E4 | QUALITY SYMBOLS □=0 □=0 □=0 | GENERAL TOLERANCES (UNLESS SPECIFIED) mm INCH 4 PLACES ±.010 ±.010 3 PLACES ±.025 ±.014 2 PLACES ±0.36 ±.010 1 PLACE ±.010 ±.010 0 PLACE ±.010 ±.010 | DIMENSION STYLE IN/MM DRAWN BY: SAMIEC DATE: 2000/07/07 CHECKED BY: MUELLER DATE: 2000/07/07 APPROVED BY: F. SMITH DATE: 2016/03/18 | SCALE: --- DESIGN UNITS: METRIC THIRD ANGLE PROJECTION | TITLE: MICRO FIT (3.0) SINGLE ROW / RIGHT ANGLE THRU HOLE / CLIPS / TRAY molex | MATERIAL NO. SEE CHART | DOCUMENT NO. SD-43650-002 | SHEET NO. 1 OF 1 | |
| | | DRAFT WHERE APPLICABLE MUST REMAIN WITHIN DIMENSIONS | | | | | | | |
| | | THIS DRAWING CONTAINS INFORMATION THAT IS PROPRIETARY TO MOLEX INCORPORATED AND SHOULD NOT BE USED WITHOUT WRITTEN PERMISSION | | | | | | | |
| | | AN ANGULAR ±1/2° | | | | | | | |