

Excellent Integrated System Limited

Stocking Distributor

Click to view price, real time Inventory, Delivery & Lifecycle Information:

[Molex Connector Corporation](#)
[0638300004](#)

For any questions, you can email us directly:

sales@integrated-circuit.com

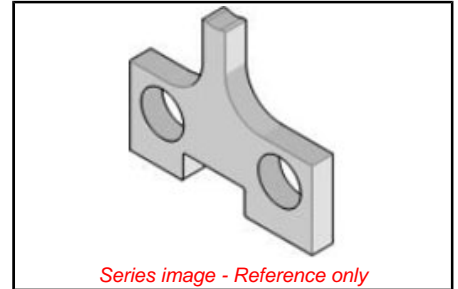
This document was generated on 04/07/2016

PLEASE CHECK WWW.MOLEX.COM FOR LATEST PART INFORMATION

Part Number: [0638300004](#)
Status: **Active**
Description: Insulation Anvil

Documents:
[RoHS Certificate of Compliance \(PDF\)](#)

General	
Product Family	Application Tooling
Series	T9999
Comments	See Tooling Specification (PDF) Above
Function	Cutter
Geographic Area	Global
Level of Automation	Semi-Automatic
More Detailed Tech Information	applicationtooling@molex.com
Product Name	N/A
Survey	www.molex.com/review/apptool_survey.html
Tool Type	Anvil
UPC	800753897335
Warranty Disclaimer	CAUTION: Molex tooling crimp specifications are valid only when used with Molex terminals and tooling manufactured by Molex and sold by Molex or authorized distributors ("Molex Tooling"). When using tooling other than Molex Tooling with Molex specific connector systems listed in our ATS documents, the Molex tooling qualification does not apply and the responsibility for full qualification of the connector system is that of the customer. Molex accepts no liability for connector performance or tooling support where tooling other than Molex Tooling is used or where Molex Tooling is modified.
Physical	
Net Weight	5.090/g
Material Info	
Reference - Drawing Numbers	
Application Tooling Documents	ATS-STANDARD-PARTS



EU ELV
Not Relevant

EU RoHS **China RoHS**

Not Relevant
REACH SVHC

Not Relevant

Halogen-Free
Status

Not Relevant

Need more information on product environmental compliance?

Email productcompliance@molex.com
Please visit the [Contact Us](#) section for any non-product compliance questions.

China ROHS
ELV

Not Relevant
Not Relevant

Search Parts in this Series
T9999 Series

Use With
63830-0000 , 63830-0070 , 63891-1000 , 63891-1070

This document was generated on 04/07/2016

PLEASE CHECK WWW.MOLEX.COM FOR LATEST PART INFORMATION