

Excellent Integrated System Limited

Stocking Distributor

Click to view price, real time Inventory, Delivery & Lifecycle Information:

[Capital Advanced Technologies, Inc.](#)
[33115](#)

For any questions, you can email us directly:

sales@integrated-circuit.com

SURFBOARDS®



THE BREADBOARDING MEDIUM FOR **SURFACE MOUNT™**

33000 SERIES APPLICATION SPECIFIC ADAPTERS IDS33115 REV 1-2012

MODEL **33115**

ACCEPTS
THESE
DEVICES
PARTIAL
LISTING

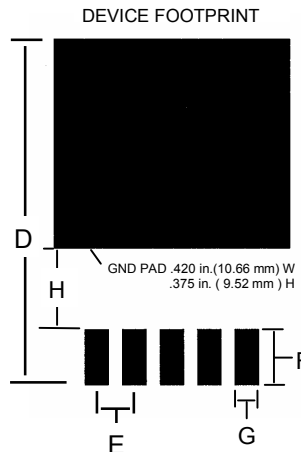
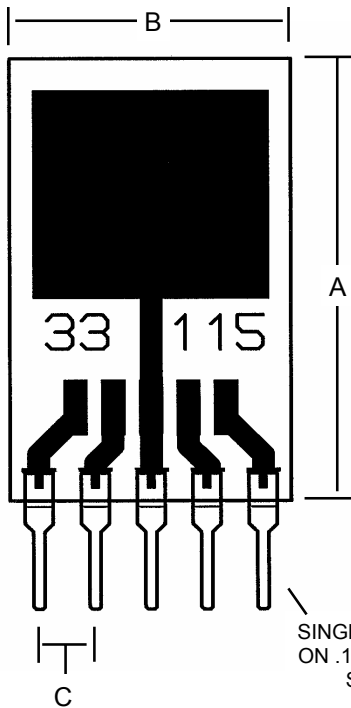
TO-263-5L
LINEAR 5-LEAD DD PKG.
MICREL 5LSPAK
ON SEMI D2PAK 5-L

ALWAYS CONSULT DEVICE DATA SHEET TO INSURE PROPER FIT

PINS ON .1 in CENTERS
 PROVIDE COMPATIBILITY
 WITH BREADBOARDS
 AND SOCKETS.

FOR PROTOTYPING,
 DEVICE EVALUATION OR
 TEST, SMD TO THROUGH
 HOLE CONVERSION.

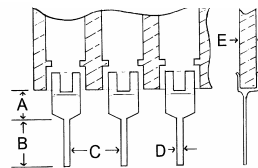
NOTE: CIRCUIT FOILS AND
 OUTPUT PINS MAY NOT BE
 SUITABLE FOR OPERATION AT
 HIGHEST RATED DEVICE
 CURRENT. EXTREME
 TEMPERATURE RISE MAY CAUSE
 FAILURE.



SINGLE-IN-LINE (SIP) PINS
 ON .1 in. CENTERS SEE PIN
 SPECIFICATIONS.

FIG.	INCHES	MM	NOTE:
A	.800	20.32	BOARD HEIGHT +/- .5mm .020in.
B	.500	12.70	BOARD WIDTH +/- .5mm .020in.
C	.100	2.54	SIP PIN SPACE +/- .20mm .008in.
D	.625	15.87	PAD (DEVICE) MAX
E	.067	1.70	DEVICE LEAD PITCH
F	.100	2.54	PAD LENGTH
G	.042	.1.06	PAD WIDTH
H	.150	3.81	GAP

PIN SPECIFICATIONS / TOLERANCES



In Inches

A =	.062 +/- .006
B =	.130 +/- .010
C =	.100 +/- .005
D =	.020 +/- .004
E =	.031 +/- .005



BOARD SPECIFICATIONS

BOARD MATERIAL: .8mm, +/- .13mm .031in+/- .005 in.
 Thick G-10 FR-4 Glass Epoxy or equivalent.
CIRCUITS: 1 oz. Copper with RoHS compliant Lead
 Free solder coating. Patten Position on board +/-
 .5mm .020in.

TOLERANCES: If not noted are +/- .20%. Nominal values are given.
 Controlling unit is Millimeters. Values rounded to nearest decimal. Slight
 Variations due to manufacturing process can occur.

Copyright 1997-2012 by Capital Advanced Technologies, Inc. All rights reserved. Surfboards is a registered trademark of Capital Advanced Technologies, Inc. The Breadboarding medium for surface mount, and the Leaf Circuit Logo are trademarks of Capital Advanced Technologies, Inc. All other trademarks are the property of their respective owners. Specifications, availability, and price is subject to change without notice. All information given is believed to be accurate but is not guaranteed. The user of information given or products represented by such information is responsible for determining the suitability of said information or products for a given purpose. No inducement is intended or permission granted for infringement of any patent or unauthorized use of any intellectual property of Capital Advanced Technologies or others.

CAPITAL ADVANCED TECHNOLOGIES, INC.

CAROL STREAM, ILLINOIS. USA.

PHONE 630-690-1696

WWW.CapitalAdvanced.Com

FAX 630-690-2498