

Excellent Integrated System Limited

Stocking Distributor

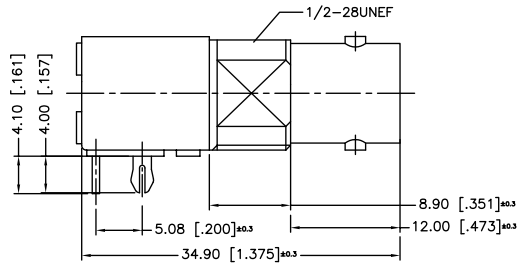
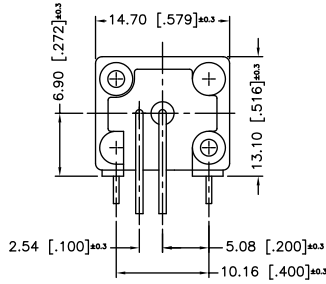
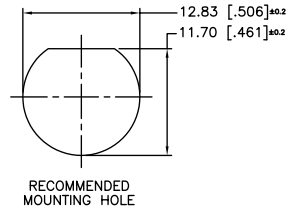
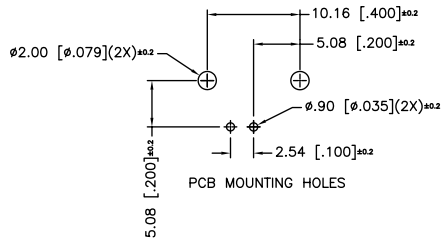
Click to view price, real time Inventory, Delivery & Lifecycle Information:

[Amphenol RF](#)
[112494](#)

For any questions, you can email us directly:

sales@integrated-circuit.com

REV.	DATE	ECR NO	DESCRIPTION
A	09/11/03	--	MODIFY BODY DIMENSIONS
B	03/30/08	--	REVISE MOUNTING PINS, ADD FLAT TO THREADED AREA
C	02/25/10	2012	HARDWARES REMOVED



NOTE:
1. MAX. PANEL THICKNESS = 5mm

DESCRIPTION	MATERIAL	FINISH	QTY	UNLESS OTHERWISE SPECIFIED DIMENSIONS ARE IN MILLIMETERS. DIMENSIONS IN [] ARE IN INCHES AND FOR CUSTOMER REFERENCE ONLY.	APPROVALS	DATE	Amphenol Connex				
5 MOUNTING POST	BRASS	TIN PLATE	1	UNLESS OTHERWISE SPECIFIED TOLERANCES FOR MILLIMETERS ARE: 0.5 - 8mm ± 0.20mm 8 - 30mm ± 0.40mm 30 - 120mm ± 0.50mm UNLESS OTHERWISE SPECIFIED TOLERANCES FOR INCHES ARE: .020 - .315 = ± 0.007" .315 - 1.180 = ± 0.015" 1.180 - 4.724 = ± 0.020" DO NOT SCALE DRAWING	DRAWN	CLEMENT	02/25/10	PART DESCRIPTION			
4 POST	COPPER	TIN PLATE	1		CHECKED			BNC R/A PCB MOUNT RECEPT. JACK (LOW PROFILE)			
3 CONTACT PIN	PHOS. BRONZE	GOLD	1		ISSUED			PART NO. 112494			
2 INSULATOR	P.P.	NATURAL	1		SHEET	1 OF 1		DWG. NO. 112494.DWG			
1 BODY	ZINC DIECAST	NICKEL	1		CAD FILE	C:/112/112494.DWG		REV. C	SIZE A	SCALE NA	