

## Excellent Integrated System Limited

Stocking Distributor

Click to view price, real time Inventory, Delivery & Lifecycle Information:

[Honeywell Sensing and Productivity Solutions](#)  
[10BS212](#)

For any questions, you can email us directly:

[sales@integrated-circuit.com](mailto:sales@integrated-circuit.com)



**MICRO SWITCH**

FREEPORT ILLINOIS, U.S.A  
 A DIVISION OF HONEYWELL  
 FED. MFG. CODE 91929

**SWITCH-BASIC**

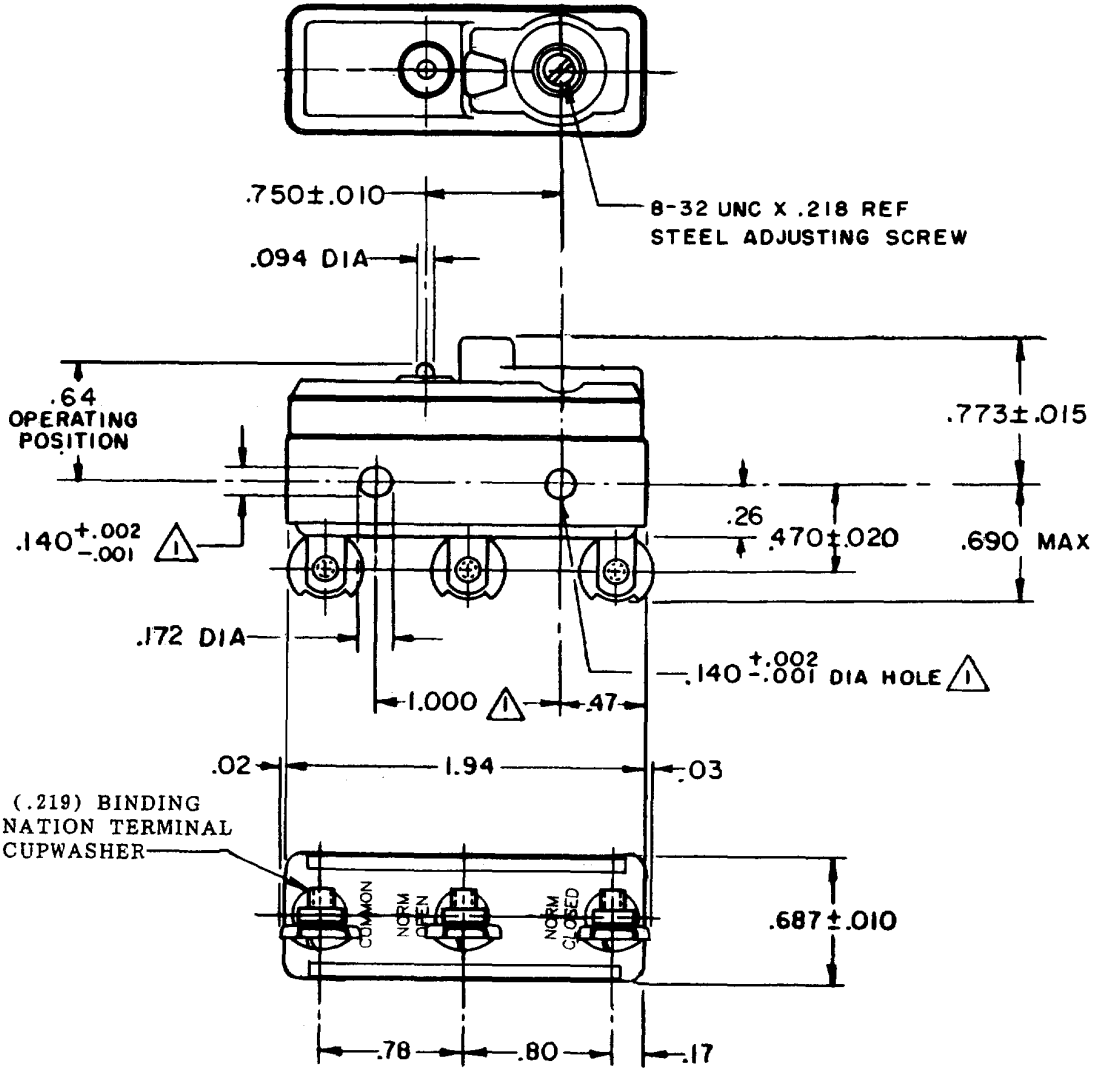
CATALOG LISTING

**10BS212**

X38737-BS  
 ISSUE 2

CATALOG LISTING  
**10BS212**  
 PAGE 1 OF 1  
**M**  
 DRAWING NUMBER  
 ISSUE 9  
 RELEASE NO. PR-125  
 REPLACES

REVISIONS	
A	037063 R R R 8 DEC 76
B	044871 WJM 8 NOV 78
C	045807 CSM 23 APR 79
D	54910 MAM 29 AUG 84
E	58782 WJM 25 JAN 86
F	73287-G CO- 20 OCT 93
G	75367B L J F 3 MAR 94
	REINST PR-24413 G J W 31 JAN 00



NOTE -  
 ▲ MOUNTING HOLES WILL ACCEPT PINS OR SCREWS OF .139 MAX DIA ON 1.000 ± .002 CENTERS  
 2 - ADJUSTING SCREW IS AT SAME ELECTRICAL POTENTIAL AS NORMALLY CLOSED TERMINAL

THIS DRAWING COVERS A PROPRIETARY ITEM AND IS THE PROPERTY OF MICRO SWITCH, A DIVISION OF HONEYWELL. THIS DRAWING IS NOT TO BE COPIED OR USED WITHOUT THE APPROVAL OF MICRO SWITCH.

CHARACTERISTICS	ELECTRICAL DATA	SCALE FULL
AT MIN. SETTING OPERATING FORCE — — — 32 OZ MAX	CONTACT ARRANGEMENT S P D T	DO NOT SCALE PRINT
RELEASE FORCE — — — — 10 OZ MIN		UNLESS OTHERWISE NOTED DIMENSIONS ARE IN INCHES
AT MAX. SETTING OVERTRAVEL — — — — .010 MIN	20A-125, 250 OR 480 VAC 3/4HP-125 VAC; 1 1/2HP-250 VAC 60/75°C (Cu)	<b>TOLERANCES ARE:</b> ONE PLACE (.0) ± .030 TWO PLACE (.00) ± .015 THREE PLACE (.000) ± .005 ANGLES ± .005
	UL ®	WEIGHT

FORMTEK  
 FO-50376-1A  
 DRAWN  
 ORD 19 FEB 68  
 CHECK