

## Excellent Integrated System Limited

Stocking Distributor

Click to view price, real time Inventory, Delivery & Lifecycle Information:

[Honeywell Sensing and Productivity Solutions](#)  
[10BS221](#)

For any questions, you can email us directly:

[sales@integrated-circuit.com](mailto:sales@integrated-circuit.com)

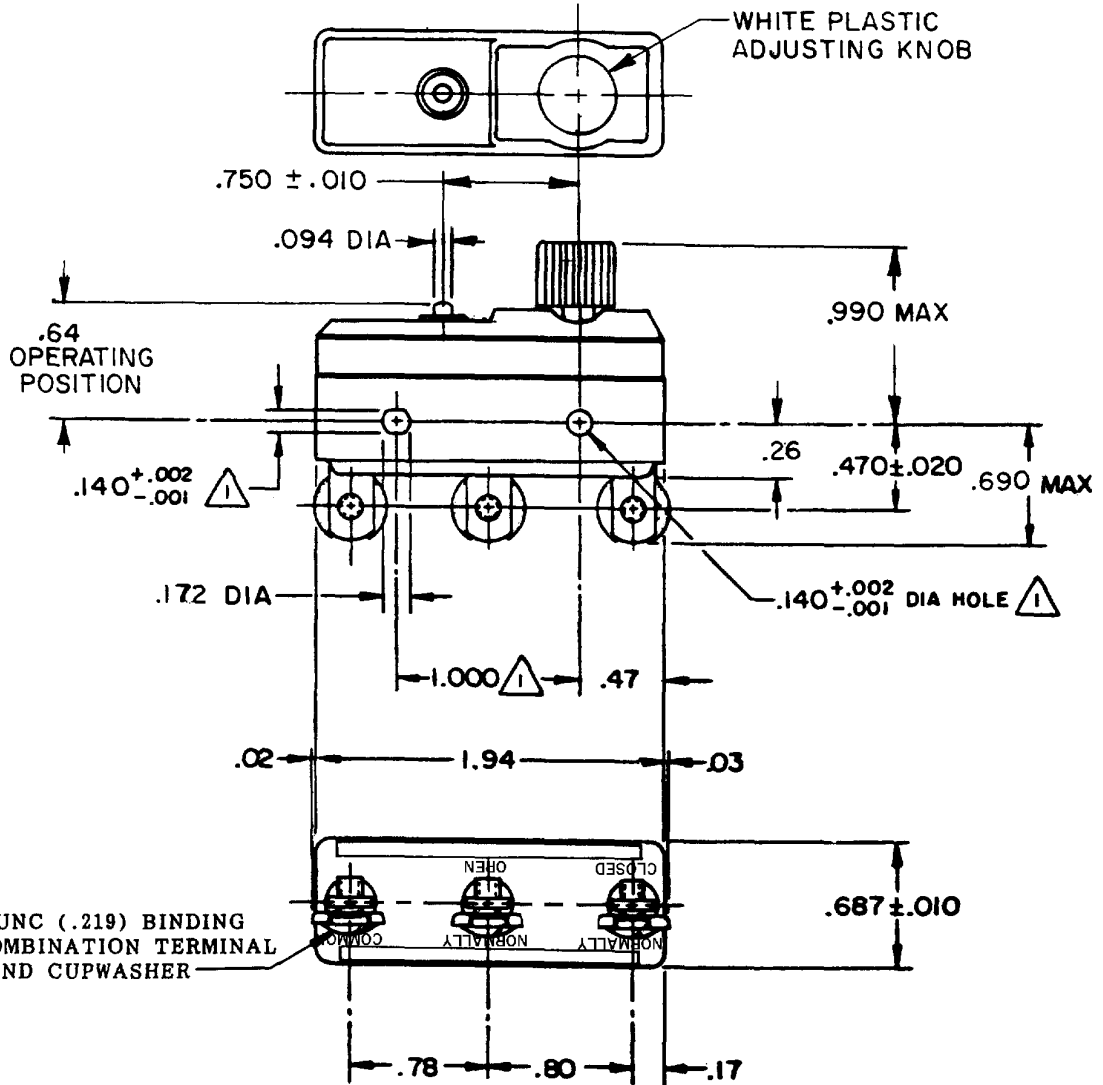
**MICRO SWITCH**

FREEPORT ILLINOIS, U.S.A  
 A DIVISION OF HONEYWELL  
 FED. MFG. CODE 91829

**SWITCH — BASIC**

CATALOG LISTING

**10BS221**

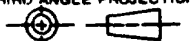


**NOTES**

- ⚠ MOUNTING HOLES WILL ACCEPT PINS OR SCREWS OF .139 MAX DIA ON 1.000 ± .002 CENTERS
- 2 DIAL WHEEL ROTATION 300°

THIS DRAWING COVERS A PROPRIETARY ITEM AND IS THE PROPERTY OF MICRO SWITCH, A DIVISION OF HONEYWELL. THIS DRAWING IS NOT TO BE COPIED OR USED WITHOUT THE APPROVAL OF MICRO SWITCH.

THIRD ANGLE PROJECTION



**CHARACTERISTICS(AT MIN SETTING)**

AT MIN SETTING  
 OPERATING FORCE ———— 32 OZ MAX  
 RELEASE FORCE ———— 10 OZ MIN  
 DIFFERENTIAL TRAVEL ——— .0015-.0020

AT MAX SETTING  
 OVERTRAVEL ———— .010 MIN

**ELECTRICAL DATA**

CONTACT ARRANGEMENT  
 S P D T

20A-125, 250 OR 480 VAC  
 3/4 HP-125 VAC; 1 1/2 HP-250 VAC  
 60/75°C(Cu)



SCALE FULL

DO NOT SCALE PRINT

TOLERANCES  
 APPLY TO DIMEN UNITS. CONVERSIONS ARE ONLY FOR REFERENCE. UNLESS NOTED, TOLERANCES ARE 2

	DIM.	TOL.	DIM.	TOL.
	mm	mm/in	in	mm/in
NO PLACES	X	1/64	X	0.010
ONE PLACE	X	0.0015	X	0.0005
TWO PLACES	X, XX	0.0005	X, XX	0.0002
THREE PLACES	X, XX, XXX	0.0002	X, XX, XXX	0.0001

DESIGN UNITS  SI METRIC  US CUSTOMARY

WEIGHT

10BS221

M

DRAWING NUMBER

ISSUE 10

**REVISIONS**

A	C080053	JALA	5 APR 95
B	CO-77863	G J W	10 MAY 96

REPLACES X72317-10BS

RELEASE NO. PR-10010-T

CHECK

CHECK

CHECK

CHECK

CHECK

CHECK

FORMTEK

DRAWN

T S K 6 APRIL 81