

Excellent Integrated System Limited

Stocking Distributor

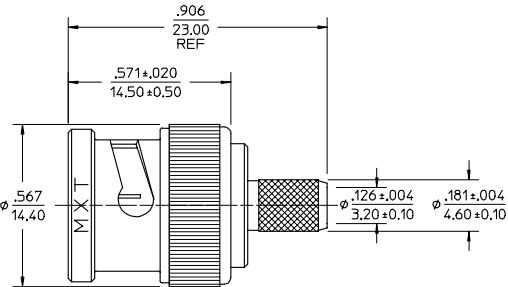
Click to view price, real time Inventory, Delivery & Lifecycle Information:

[Molex Connector Corporation](#)
[0731740083](#)

For any questions, you can email us directly:
sales@integrated-circuit.com

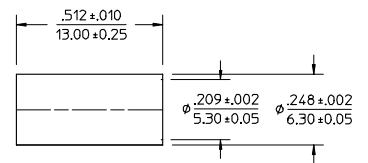
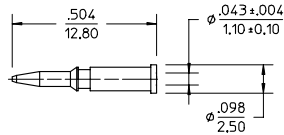
MATERIALS AND FINISHES

- BODY BRASS
PLATED NICKEL
- CENTER CONTACT BRASS
PLATED GOLD (10u")
- INSULATOR POLYPROPYLENE
- WASHER , RETAINING RING BRASS
PLATED NICKEL
- COUPLING NUT BRASS
PLATED NICKEL
- SPRING WASHER PHOSPHOR BRONZE
PLATED NICKEL
- GASKET SILICONE RUBBER



CABLE ATTACHMENT:
INNER CONTACT ATTACHMENT--SOLDER/CRIMP(HEX:1.69)
OUTER CONDUCTOR--CRIMP(HEX:5.41)

PACKAGING: INDIVIDUAL PLASTIC BAGS.



PART # 73174-0083

AS-89678-9040	PRODUCT SPECIFICATION
PS-73598-0024	ASSEMBLY INSTRUCTION
SPECIFICATION	DESCRIPTION

CHG: AS-89678-9070 WAS AS-73597-0042 TITLE CHG. 'SD' WAS 'SDA' EC NO. RF03-134 DRWN: CLAIRE 05/20/03 CHK: JOHNSON APPR: NISEN	REV D	DESCRIPTION
---	----------	-------------

UNLESS OTHERWISE SPECIFIED DIMS ARE INCHES AND ANGLES ARE DEGREES.
1. ✓ 63 ALL OVER.
2. NO CHATTER OR NON-UNIFORM SURFACE FINISH ALLOWED.
3. PARTS TO BE FREE OF BURRS & SHARP EDGES .005 MAX BREAK.
4. EXTERNAL THREADS TO BE ROLLED OR SINGLE POINT.
5. DIAMETERS TO BE CONCENTRIC WITHIN .003 TIR.

QUALITY SYMBOLS
MAJOR
CRITICAL

GENERAL TOLERANCES: (UNLESS SPECIFIED)	
4 PLACES	± .005
3 PLACES	± .004
2 PLACES	± .003
1 PLACE	± .002
ANGULAR: +2°	
DRAFT WHERE APPLICABLE MUST REMAIN WITHIN DIMENSIONS	

SCALE	DESIGN UNITS
DRAWN BY & DATE	KELLY92/06/20
CHECKED BY & DATE	
APPROVED BY & DATE	
CAD FILENAME	

TITLE:	50 OHMS BNC STRAIGHT PLUG FOR RG58C/U, RG141A/U, RG303/U
MATERIAL NO.	SEE NOTE
DRAWING NO.	SD-73174-0083
SHEET NO.	1 of 1
SIZE	B