

Excellent Integrated System Limited

Stocking Distributor

Click to view price, real time Inventory, Delivery & Lifecycle Information:

[Molex Connector Corporation](#)
[0733560210](#)

For any questions, you can email us directly:

sales@integrated-circuit.com

MATERIALS AND FINISHES

BODY, COUPLING NUT: BRASS OR ZINC
PLATED NICKEL

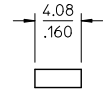
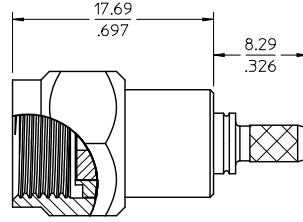
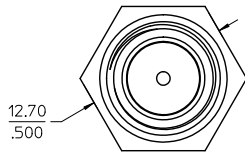
CRIMP TUBE: BRASS
PLATED NICKEL

CONTACT: BRASS
PLATED GOLD

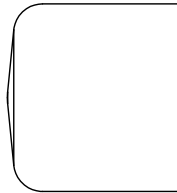
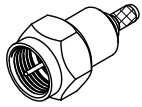
INSULATOR: TEFLON

CAP: VINYL (BLACK)

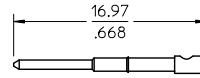
SNAP RING: BERYLLIUM COPPER



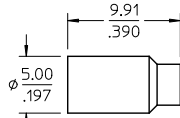
STIFFENER
73356-0211 ONLY



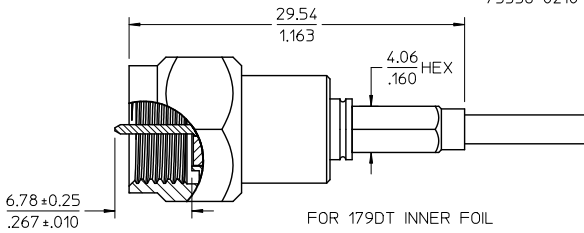
PROTECTIVE CAP
73356-0210 ONLY



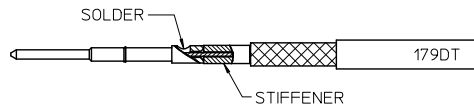
CONTACT



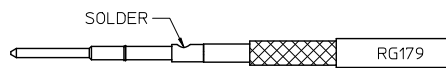
CRIMP TUBE



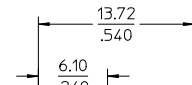
FOR 179DT INNER FOIL
GOES INSIDE
CONNECTOR REAR BODY



SOLDER
STIFFENER
179DT



SOLDER
RG179



73356-0212	RG-179
73356-0211	BELDEN 179DT
73356-0210	RG-179
PART NO.	FOR CABLE

PS-89675-3640	ELECTRO PERFORMANCE
SPECIFICATION	DESCRIPTION
DIMENSION STYLE MM/IN	SCALE INCH
DESIGN UNITS INCH	THIRD ANGLE PROJECTION

CHG: PS WAS -1710 EC NO: URF202-0297 DRAWN: JWIENER CHK'D: JWIENER APPR: JWIENER B5	QUALITY SYMBOLS ▽=0 ▽=0	GENERAL TOLERANCES (UNLESS SPECIFIED)		DRAWN BY LMB CHECKED BY GMH APPROVED BY JWIENER MATERIAL NO. SEE TABLE SIZE C	DATE 2000/10/20 DATE 2000/10/20 DATE 2010/03/31 DOCUMENT NO. SD-73356-021 SHEET NO. 1 OF 1	TITLE F PLUG STRAIGHT FOR RG179 OR 179DT F-PC MOLEX INCORPORATED
		mm	INCH			
		4 PLACES ±	±			
		3 PLACES ±	±			
2 PLACES ±	±	ANGULAR ± 2°		DRAFT WHERE APPLICABLE MUST REMAIN WITHIN DIMENSIONS		
1 PLACE ±	±					