

Excellent Integrated System Limited

Stocking Distributor

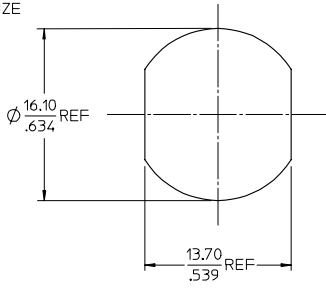
Click to view price, real time Inventory, Delivery & Lifecycle Information:

[Molex Connector Corporation](#)
[0733861090](#)

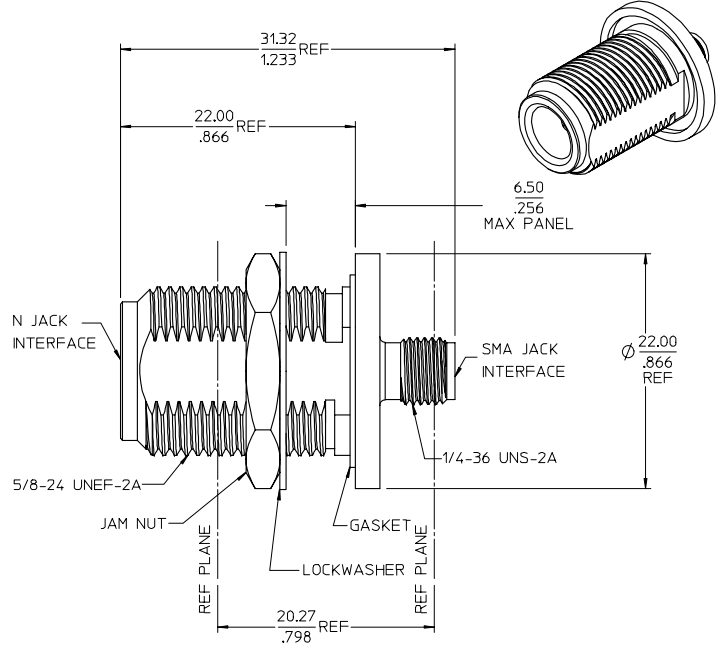
For any questions, you can email us directly:
sales@integrated-circuit.com

MATERIALS AND FINISHES

- J BODY STAINLESS STEEL
PASSIVATED
- I JAM NUT BRASS
PLATED NICKEL
- H CENTER CONTACT BERYLLIUM COPPER
PLATED GOLD
- G INSULATOR TEFLON
- F GASKET SILICONE RUBBER
- E LOCK WASHER PHOSPHOR BRONZE
PLATED NICKEL



RECOMMENDED MOUNTING HOLE



MIL-STD-348A, FIG 304-2	N INTERFACE
MIL-STD-348A, FIG 310-2	SMA INTERFACE
PS-89675-2720	ELEC/MECH PERFORMANCE
SPECIFICATION	DESCRIPTION

73386-1091	73386-1090, ONE PER BAG
73386-1090	BULK
PART NO.	PACKAGING

CHG: ADDED P/N 73386-1091 ELC NO: URF2007-0287 DRW: TELAHERTY 2007/02/08 CHK: KOSHAH 2007/02/08 APPR: JMWENER 2007/02/08 DESCRIPTION A1	QUALITY SYMBOLS	GENERAL TOLERANCES (UNLESS SPECIFIED)	DIMENSION STYLE	SCALE	DESIGN UNITS	THIRD ANGLE PROJECTION	
	▽=0 ▽=0	mm INCH 4 PLACES ± .005 ± .005 3 PLACES ± .005 ± .005 2 PLACES ± .005 ± .005 1 PLACE ± .005 ± .005 ANGULAR ± 2°	MM/IN	DATE	METRIC	☉	
				DRAWN BY JM DATE 2005/08/23 CHECKED BY JM DATE 2005/08/23 APPROVED BY JDW DATE 2005/08/23			BSA, N JACK BULKHEAD TO SMA JACK, 50 OHMS EWR-2892, BSA-NJ/SMAJ
		DRAFT WHERE APPLICABLE MUST REMAIN WITHIN DIMENSIONS	MATERIAL NO. SEE TABLE SIZE C	DOCUMENT NO. SD-73386-109 MOLEX INCORPORATED			SHEET NO. 1 OF 1