

Excellent Integrated System Limited

Stocking Distributor

Click to view price, real time Inventory, Delivery & Lifecycle Information:

[Molex Connector Corporation](#)
[0734152381](#)

For any questions, you can email us directly:

sales@integrated-circuit.com

MATERIALS AND FINISHES

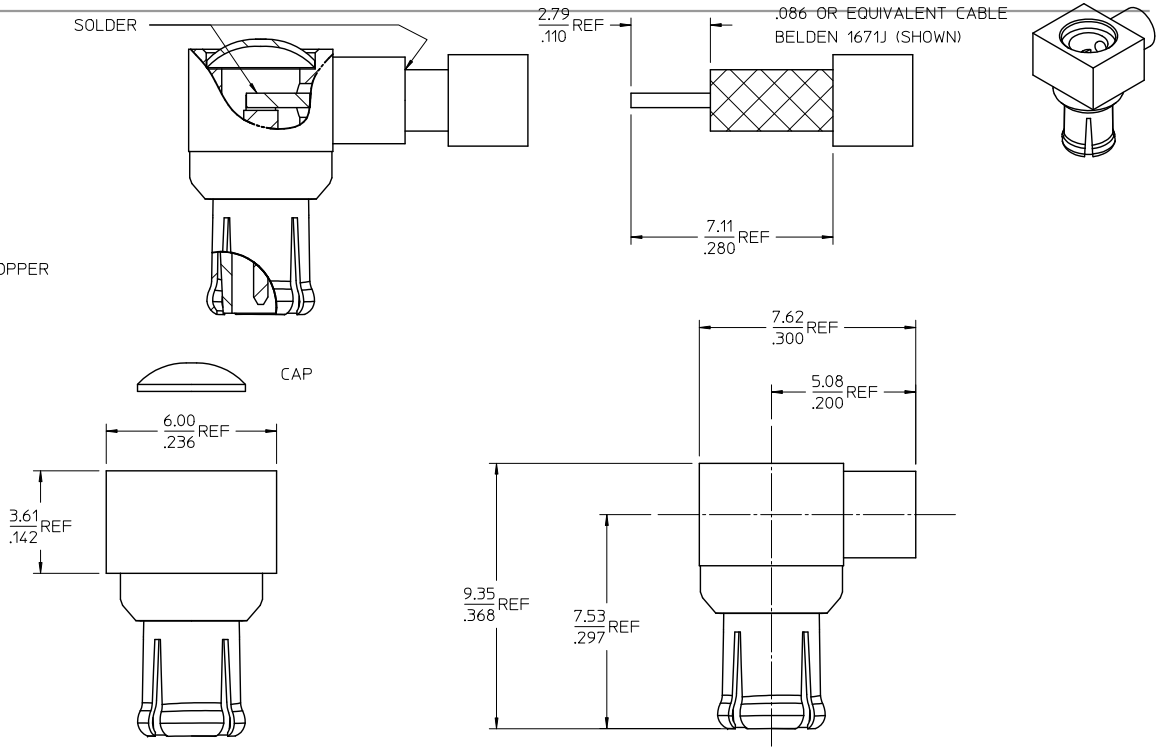
BODY, CAP: BRASS
PLATED SEE TABLE

CENTER CONTACT: BRASS
PLATED GOLD

INSULATOR, SPACER: TEFLON

OUTER CONTACT: BERYLLIUM COPPER
PLATED GOLD

SOLDER



73415-2383	GOLD	GOLD	-
73415-2382	NICKEL	NICKEL	73366-6032
73415-2381	GOLD	GOLD	73366-6030
73415-2380	TIN	NICKEL	73366-6031
PART NO.	BODY	CAP	SAME AS
	FINISH	FINISH	

PS-89675-1740	PRODUCT SPECIFICATION
CECC-22-220	INTERFACE
SPECIFICATION	DESCRIPTION

ADDED P/N:
73415-2383
PER PDR110908
EC NO: URF2012-0568
2011/10/07
DRAWN BY:
CHKD:
APPR:HUANG
2012/04/11

QUALITY SYMBOLS
 = 0
 = 0

	GENERAL TOLERANCES (UNLESS SPECIFIED)	
	mm	INCH
4 PLACES	± .010	± .0004
3 PLACES	± .015	± .0006
2 PLACES	± .020	± .0008
1 PLACE	± .030	± .0012
ANGULAR ± 2 °		

DRAFT WHERE APPLICABLE MUST REMAIN WITHIN DIMENSIONS

DIMENSION STYLE		SCALE	DESIGN UNITS	THIRD ANGLE PROJECTION
MM/IN			METRIC	
DRAWN BY	DATE			
SSS	2000/07/26			
CHECKED BY	DATE			
TEF	2000/07/27			
APPROVED BY	DATE			
GMH	2000/07/27			

TITLE		SHEET NO.	
MCX PLUG, R/A 50 OHMS FOR 086 CABLE MCX-PC		1 OF 1	
MATERIAL NO.		DOCUMENT NO.	
SEE TABLE		SD-73415-238	
MOLEX INCORPORATED			
<small>THIS DRAWING CONTAINS INFORMATION THAT IS PROPRIETARY TO MOLEX INCORPORATED AND SHOULD NOT BE USED WITHOUT WRITTEN PERMISSION</small>			