

Excellent Integrated System Limited

Stocking Distributor

Click to view price, real time Inventory, Delivery & Lifecycle Information:

[Molex Connector Corporation](#)
[0734153210](#)

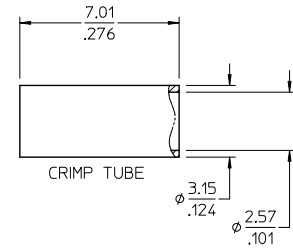
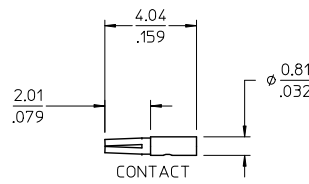
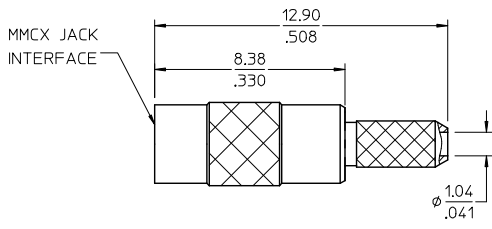
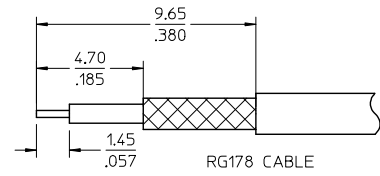
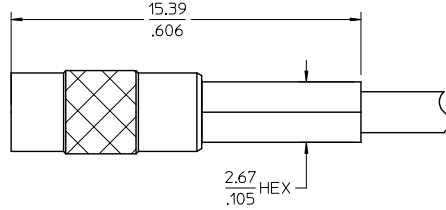
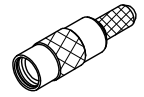
For any questions, you can email us directly:
sales@integrated-circuit.com

MATERIALS AND FINISHES

BODY, CRIMP TUBE BRASS
PLATED GOLD

CENTER CONTACT BERYLLIUM COPPER
PLATED SEE TABLE

INSULATOR TEFLON



AS-89678-6900	CABLE ASSEMBLY INSTR.
ES-73599-0000-016	INTERFACE
SPECIFICATION	DESCRIPTION

73415-3213	SINGLE PIECE 73415-3211 PER BAG
73415-3212	SINGLE PIECE 73415-3210 PER BAG
73415-3211	GOLD (30 MICROINCHES MIN)
73415-3210	GOLD (10 MICROINCHES MIN)
PART NO.	PLATING

CHG: ADDED
CABLE STRIP DIM.
EWR RF-15-E148
EC NO: URF2015-0484
DRAWN: CHENG 2015/03/04
CHKD:
APPR: CHENG 2015/03/04
A4

QUALITY SYMBOLS
▽=0
▽=0

GENERAL TOLERANCES (UNLESS SPECIFIED)	
mm	INCH
4 PLACES ±	±
3 PLACES ±	±
2 PLACES ±	±
1 PLACE ±	±
ANGULAR ± 2°	

DIMENSION STYLE	
MM/IN	SCALE
DRAWN BY: GMH	DATE: 2011/04/20
CHECKED BY: KERRIE	DATE: 2015/03/02
APPROVED BY:	DATE:

DESIGN UNITS	THIRD ANGLE PROJECTION
METRIC	
TITLE: MMCX JACK, RG178 50 OHMS, EWR-2603 MMCX-JC	
MOLEX INCORPORATED	
MATERIAL NO. SEE TABLE	DOCUMENT NO. SD-73415-321
SIZE C	SHEET NO. 1 OF 1

DRAFT WHERE APPLICABLE MUST REMAIN WITHIN DIMENSIONS

THIS DRAWING CONTAINS INFORMATION THAT IS PROPRIETARY TO MOLEX INCORPORATED AND SHOULD NOT BE USED WITHOUT WRITTEN PERMISSION