

Excellent Integrated System Limited

Stocking Distributor

Click to view price, real time Inventory, Delivery & Lifecycle Information:

[Bel Fuse Inc.](#)
[CBBJ379](#)

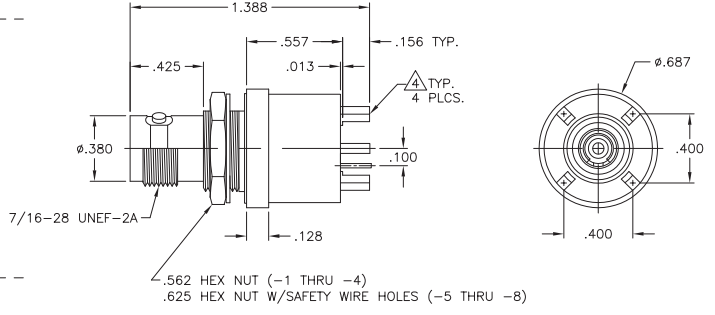
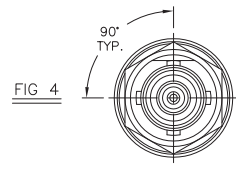
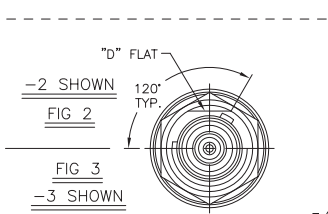
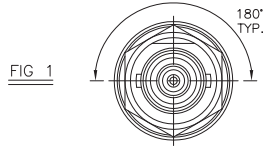
For any questions, you can email us directly:
sales@integrated-circuit.com

THE INFORMATION CONTAINED HEREON IS THE PROPERTY OF EMERSON NETWORK POWER, RECEIPT, POSSESSION OR TRANSMITTAL OF THIS DRAWING DOES NOT LICENSE OR IMPLY ANY RIGHT TO USE, SELL, PROTOTYPE OR MANUFACTURE FROM THIS INFORMATION. NO REPRODUCTIONS OR PUBLICATION OF THIS INFORMATION, IN WHOLE OR IN PART, SHALL BE MADE WITHOUT WRITTEN AUTHORIZATION FROM EMERSON NETWORK POWER.

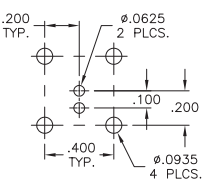
DWG NO. 3-0272 SH 1

REVISIONS			
REV	DESCRIPTION	DATE	APPROVED
C	ECO 12672	1/7/99	C.N.M.
D	ECO 52441	6/10/10	T. KOHLER

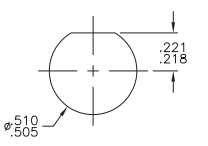
DASH NO	FIG NO	CONNECTOR TYPE	MODEL NO
-1	1	2-LUG	CBBJ79TL
-2	2	3-LUG	CBBJ79
-3	3	THREADED	CBBJ379
-4	4	4-LUG	CBBJ79FL
-5	1	2-LUG	CBBJ79TLS
-6	2	3-LUG	CBBJ79S
-7	3	THREADED	CBBJ379S
-8	4	4-LUG	CBBJ79FLS



RECOMMENDED MTG HOLE PATTERN SCALE 2:1



RECOMMENDED PANEL CUTOUT SCALE 2:1



- PRE-TINNED, .0015 MAXIMUM THICKNESS WITH SN63 OR EQUIVALENT SOLDER, PER QQ-S-571, TO WITHIN .060 MAXIMUM OF SHOULDER, AFTER PLATING.
- MAXIMUM PANEL THICKNESS .109
- FEMALE 2/3/4 LUG & THREADED CONCENTRIC BOARD AND NON-INSULATED BULKHEAD MOUNT RECEPTACLE.
- FINISH: TFS-1A (NICKEL)

SURFACE AREA (IN ²)	UNLESS OTHERWISE SPECIFIED DIMENSIONS ARE IN INCHES		
	TOLERANCES ARE:		
	FRACTIONS ±	DECIMALS ±	ANGLES ±
		.XXX ± .005	
		.XXXX ± .0010	
MATERIAL	SIGNATURES	DATE	CBBJ79/TL/FL/379 CBBJ79S/TLS/FLS/379S
	DRAWN BY C. WALLACE	6/17/10	
FINISH	CHECKED BY	APPROVED BY	SIZE CAGE CODE DWG NO. B 14949 3-0272
DO NOT SCALE DRAWING	APPROVED BY	SCALE	DATE: 4/9/85 SHEET 1 OF 2 DATE: 4/9/85 SHEET 1 OF 2