

## Excellent Integrated System Limited

Stocking Distributor

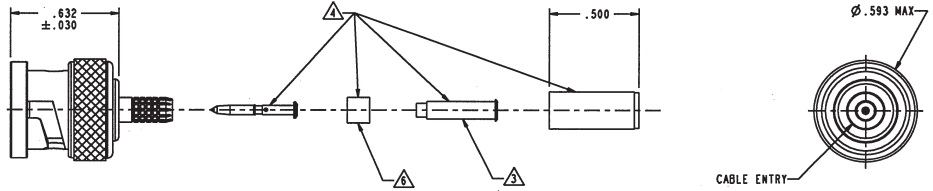
Click to view price, real time Inventory, Delivery & Lifecycle Information:

[Bel Fuse Inc.](#)  
[UPL220-025/T50](#)

For any questions, you can email us directly:  
[sales@integrated-circuit.com](mailto:sales@integrated-circuit.com)

DASH NO	CABLES ACCOMMODATED	A HEX	ASSEMBLE PER
-001	RG-178, -196	.178	TAI-D118
-002	HEWLETT PACKARD 8120-1107	.197	
-003	RG-174, 316	.178	
-004	RG-179, 187	.178	
-005	NORTHERN ELECTRIC DBL-SHLD RG-187	.197	
-006	GC875GP1, GRUMMAN DBL-SHLD RG-188	.197	
-007	275-3991, MICRODOT	.178	
-008	RG-195, -180 421-1111, ESSEX	.178	
-009	8218, BELDEN YR23023 BELDEN 21-597, ESSEX	.178	
-010	RG-122	.213	
-011	RG-58; RG-141; RG-303, TCC-50-2	.213	
-012	RG-55, -142 -223, -400	.213	
-013	RG-59	.255	
-013A	TCC-75-2	.255	
-014	8212, BELDEN	.290	
-015	730A, LUCENT	.324	
-016	724, LUCENT 8281, BELDEN	.344	
-017	RG-6	.255	
-018	9268, BELDEN	.290	
-019	8279, BELDEN	.290	
-020	9248, BELDEN	.213	
-021	88240, BELDEN	.255	
-022	88241, 88269, BELDEN	.290	
-023	89108, BELDEN	.255	
-024	89120, BELDEN	.255	
-025	734A, LUCENT	.178	
-026	735A, LUCENT	.178	
-026-X		.178	
-027	KS19224L2, LUCENT	.324	
-030	32448A, DRAKA	.213	
-031	COT RAT000	.213	
			TAI-D118
			TAI-C118
			TAI-D118
			TAI-243
			TAI-D118

REVISIONS			
REV	DESCRIPTION	DATE	APPROVED
AU	REVISED PER ECO# 16945		<i>[Signature]</i>



RED INDICATES ORIGINAL



- ⚠ IF PLASTIC STRAIN RELIEF REQUIRED, ADD SUFFIX "BT" TO MODEL NO. (ONLY AVAILABLE WITH -011, -013 & -013A)
- ⚠ CONTACT SUPPORT BUSHING REED ON -002 THRU -007-022 & -027 ONLY
- 5. RF COAXIAL 75 OHM BNC FULL CRIMP CABLE PLUG
- ⚠ P.W. SLEEVE, CRIMP SLEEVE & CONTACT SUPPORT BUSHING ARE SUPPLIED LOOSE
- ⚠ SLEEVE REQUIRED ON -001 THRU -007 & -027 ONLY
- 2. FINISH: TFS-1A NICKEL
- 1. ALL DIM ARE IN INCHES

⚠ FOR CABLE GROUP -011 SUPPLY 1 EA ACCO11 FOR CABLE GROUPS -013 & -013A SUPPLY 1 EA ACCO13 MAY BE ASSEMBLED TO CABLE CONNECTOR ASSY USING 3M SCOTCHGRIP NO 1099 PLASTIC ADHESIVE, OR EQUIV

NOTES: UNLESS OTHERWISE SPECIFIED.

INTERPRET DRAWING PER BELDEN-100 DIMENSIONS ARE IN INCHES UNLESS OTHERWISE SPECIFIED DIMENSIONS UNLESS OTHERWISE SPECIFIED		TOL: UNLESS SPECIFIED .XX ± .02 .XXX ± .010 ANGLE ± 1°	
DESIGNED BY L.M. 7-30-09	MATERIAL	TITLE: UPL220	
CHECKED BY M.J. 8-5-09	FINISH	SIZE B 14949	DRAWING NO. 1-0468
APPROVED BY Z.M. 8-5-09	DO NOT SCALE DWG	SCALE 2/1	REV AU
NEXT ASSY	PROBE FILE NO. 1-0468	DATE 2/17/82	SHEET 1C