

Excellent Integrated System Limited

Stocking Distributor

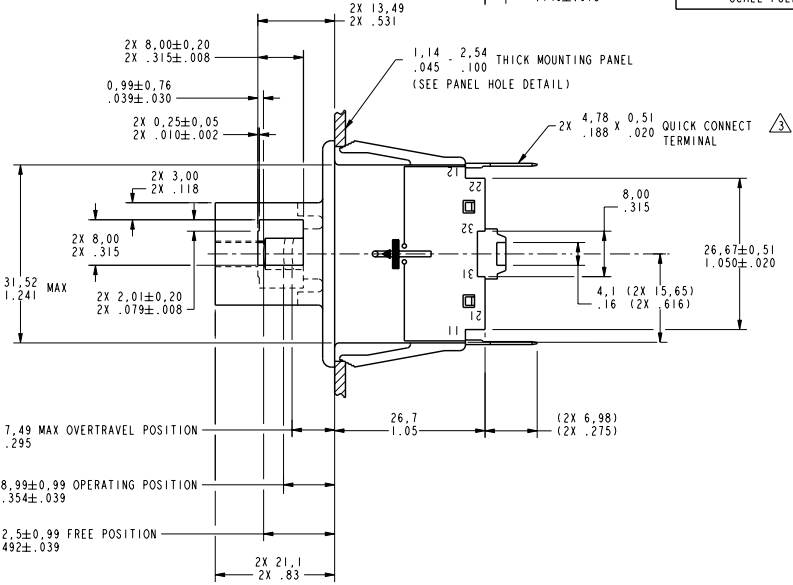
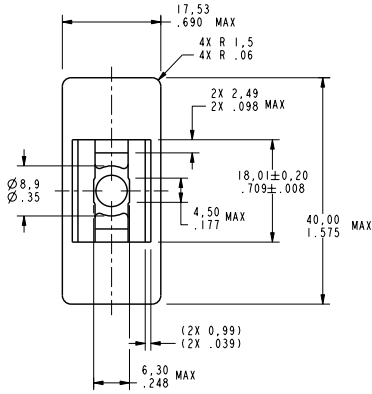
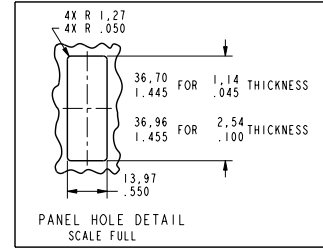
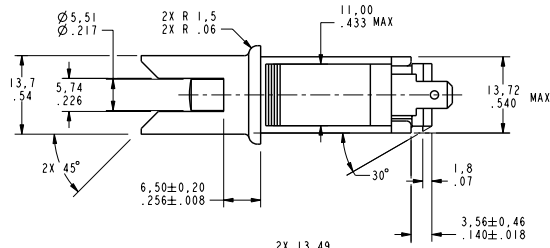
Click to view price, real time Inventory, Delivery & Lifecycle Information:

[Honeywell Sensing and Productivity Solutions](#)
[WW1A24A-D8](#)

For any questions, you can email us directly:

sales@integrated-circuit.com

WW1A24A-D8



- NOTES
 1 - BLACK PLASTIC HOUSING AND PLUNGER
 2 - HOUSING HAS BOSS AROUND PLUNGER TO MEET BS1 AND VDE AGENCY
 3 - 8.0/.315 CLEARANCE REQUIREMENT
 QUICK CONNECT TERMINALS CONFORM TO 4.78/.188 WIDE X 0.51/.020 THICK NEMA DC-2 SPECIFICATION

CHARACTERISTICS	ELECTRICAL DATA
OPERATING FORCE - - 5.62N/20 OZ APPROX	CONTACT ARRANGEMENT SINGLE POLE
OVERTRAVEL - - - - - 2.00/.079 MIN	16A 1/2HP 125, 250 VAC 3A 1/2S VAC 1" PILOT DUTY: 150 VA 125, 250 VAC 2A - 24 VDC (CFL 11-12 AND 31-32) 60/75°C (CU)

THIS DRAWING COVERS A PROPRIETARY ITEM AND IS THE PROPERTY OF MICRO SWITCH, A DIVISION OF HONEYWELL. THIS DRAWING IS NOT TO BE COPIED OR USED WITHOUT THE APPROVAL OF MICRO SWITCH.

MICRO SWITCH
a Honeywell Division

SWITCH - BASIC

WW1A24A-D8

CATALOG LISTING

FED. MFG. CODE 91929

THIRD ANGLE PROJECTION			
SCALE 2:1			
DO NOT SCALE PRINT			
TOLERANCES			
APPLY TO DESIGN UNITS. CONVERSIONS ARE ONLY FOR REFERENCE. UNLESS NOTED, TOLERANCES ARE:			
FR	IN	MM	IN
NO PLACES	2, 1	1/32	0.015, 0.010, 0.005
ONE PLACE	2, 1	0.0004	0.0004, 0.0003, 0.0002
TWO PLACES	2, 1	0.0010	0.0010, 0.0008, 0.0005
THREE PLACES	2, 1	0.0001	0.0001, 0.00008, 0.00005
DESIGN UNITS	SI METRIC	US CUSTOMARY	
WEIGHT			

P.T.C./CAD 20
 C.S.E. 1/29 JAN 02
 SAU 29 JAN 02
 REV. 1 OF 1
 REVISIONS
 5
 WW1A24A-D8
 REVISION NO. 19351
 REVISIONS 193515-WW

ANSI Y14.5M-1982 APPLIES