

## Excellent Integrated System Limited

Stocking Distributor

Click to view price, real time Inventory, Delivery & Lifecycle Information:

[Honeywell Sensing and Productivity Solutions](#)  
[YA-2R-A2](#)

For any questions, you can email us directly:

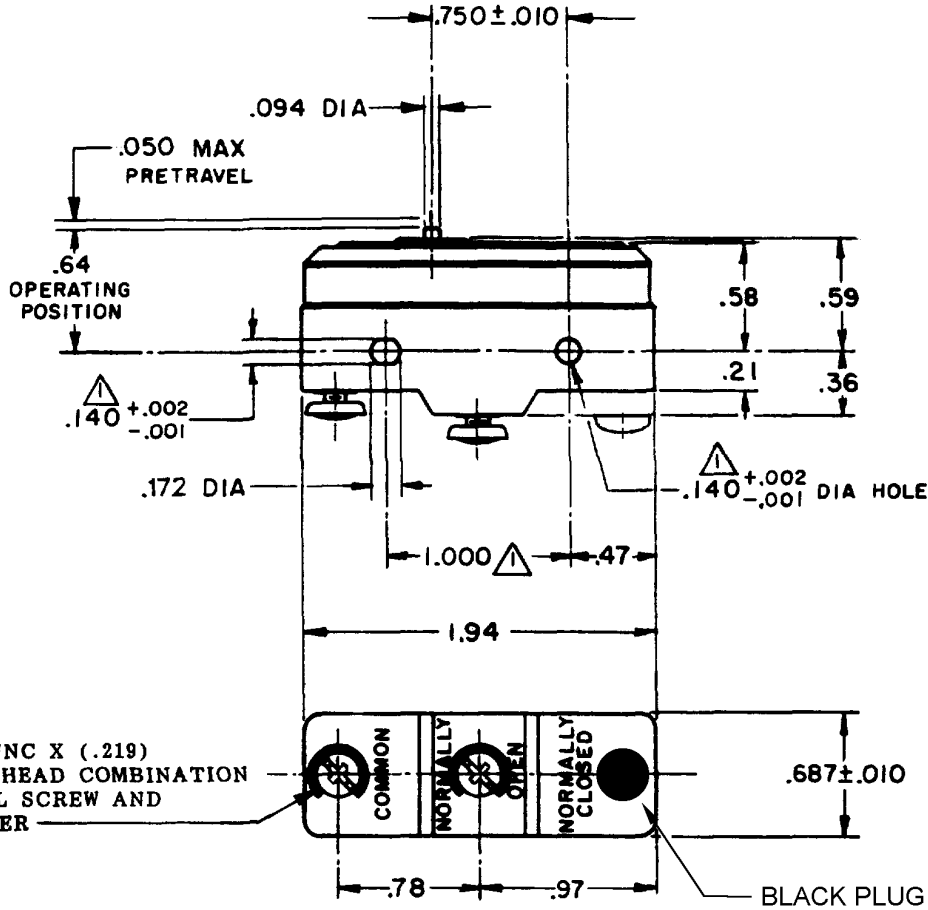
[sales@integrated-circuit.com](mailto:sales@integrated-circuit.com)

**MICRO SWITCH**  
 A DIVISION OF MINNEAPOLIS-HONEYWELL REGULATOR COMPANY  
 FEDERAL MFR. CODE 91929

**SWITCH - BASIC**

CATALOG LISTING  
**YA-2R-A2**  
 ADF8500

CATALOG LISTING  
**YA-2R-A2**  
 PAGE 1 OF 1  
 ISSUE 8  
 REVISIONS  
 A CO 9600 RER 25 APR 60  
 B CO34308 K P 28 NOV 73  
 C CO-73287-J J A L 22 NOV 93  
 D CO-77588 K D R 29 MAR 94  
 E C093346 D L T 27 AUG 98  
 F 0000763 C S L 2 JUL 03  
 G 0018388 T G P 17 FEB 06  
 RER 25 APR 60  
 GCH 5 MAY 60  
 RASTER  
 DRAWN  
 74-95



2X 6-32 UNC X (.219)  
 BINDING HEAD COMBINATION  
 TERMINAL SCREW AND  
 CUPWASHER

**NOTE**  
 ▲ - MOUNTING HOLES WILL ACCEPT PINS OR SCREWS  
 OF .139 MAX DIA ON 1.000 ± .002 CENTERS

THIS DRAWING COVERS A PROPRIETARY ITEM AND IS THE PROPERTY OF MICRO SWITCH, A DIVISION OF MINNEAPOLIS-HONEYWELL REGULATOR CO. THIS DRAWING IS NOT TO BE COPIED OR USED WITHOUT THE APPROVAL OF MICRO SWITCH.

CHARACTERISTICS	ELECTRICAL DATA	SCALE FULL
OPERATING FORCE - - - - - 14-22 OZ	CONTACT ARRANGEMENT S P N O	DO NOT SCALE PRINT
RELEASE FORCE - - - - - 10 OZ MIN	L23 20A - 125, 250 OR 480 VAC 10A - 125 VAC "L" 1HP - 125 VAC, 2HP - 250 VAC 1/2A - 125 VDC, 1/4A - 250 VDC	UNLESS OTHERWISE SPECIFIED DIMENSIONS ARE IN INCHES <b>TOLERANCES ARE:</b> ONE PLACE (.0) ±.030 TWO PLACE (.00) ±.015 THREE PLACE (.000) ±.005 ANGLES ±
DIFFERENTIAL TRAVEL - - - .002-.0075	L288 L308 L315	WEIGHT .064 LB
OVERTRAVEL - - - - - .010 MIN	CE 20(3)A 250V ~ T85 5E4	