

## Excellent Integrated System Limited

Stocking Distributor

Click to view price, real time Inventory, Delivery & Lifecycle Information:

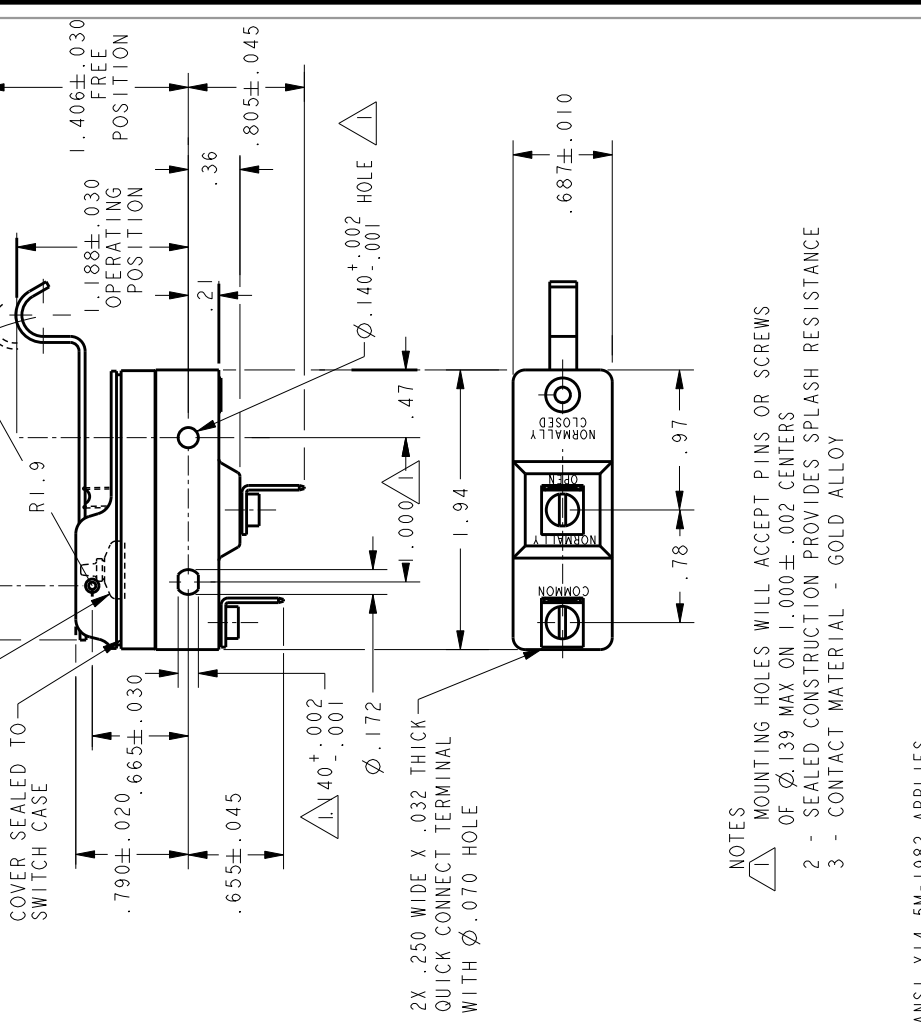
[Honeywell Sensing and Productivity Solutions](#)  
[YZ-2RW80725551-D6](#)

For any questions, you can email us directly:

[sales@integrated-circuit.com](mailto:sales@integrated-circuit.com)

MICRO SWITCH  
 a Honeywell Division  
 FED. MFG. CODE 91929

SWITCH - BASIC  
 YZ-2RW80725551-D6  
 CATALOG LISTING



THIS DRAWING COVERS A PROPRIETARY ITEM AND IS THE PROPERTY OF MICRO SWITCH, A DIVISION OF HONEYWELL. THIS DRAWING IS NOT TO BE COPIED OR USED WITHOUT THE APPROVAL OF MICRO SWITCH.		THIRD ANGLE PROJECTION 
<b>CHARACTERISTICS</b> OPERATING FORCE ----- 3 1/2 OZ MAX RELEASE FORCE ----- 3/4 OZ MIN DIFFERENTIAL TRAVEL ----- .004 - .040 OVERTRAVEL ----- .156 MIN		<b>ELECTRICAL DATA</b> CONTACT ARRANGEMENT S P N 0 L22 1A 125 VAC L288 L307 L315 1A 250V ~ T85 25E3
<b>SCALE</b> FULL SCALE PRINT UNLESS OTHERWISE SPECIFIED TOLERANCES ARE ONE PLACE (.0) ± .030 TWO PLACE (.00) ± .015 THREE PLACE (.000) ± .005 ANGLES WEIGHT .076 LB		<b>DO NOT SCALE PRINT</b> 

P T C / C A D 2 D DRAWN	T S M 1 4 J U L 0 0	C H E C K S A Y 1 4 J U L 0 0	C H E C K R J 2 3 N O V 0 5	C H E C K 4 I S S U E	P A G E 1 O F 1 Y Z - 2 R W 8 0 7 2 5 5 5 1 - D 6 C A T A L O G L I S T I N G	R E P L A C E S X 1 0 0 8 9 1 - Y Z
----------------------------	------------------------	-------------------------------------	-----------------------------------	-----------------------------	---	--

R E V I S I O N S A 200763 T S M 1 4 J U L 0 0 B 0016786 S P Y 2 3 N O V 0 5	R E L E A S E N O . P R - 2 2 4 5 9	F E D . M F G . C O D E 9 1 9 2 9
--	--	--------------------------------------