

Excellent Integrated System Limited

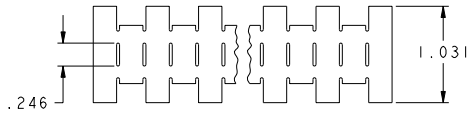
Stocking Distributor

Click to view price, real time Inventory, Delivery & Lifecycle Information:

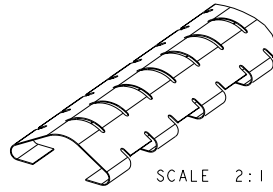
[Laird Technologies EMI](#)
[0077005702](#)

For any questions, you can email us directly:

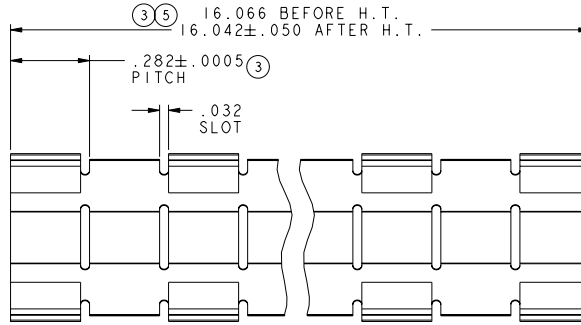
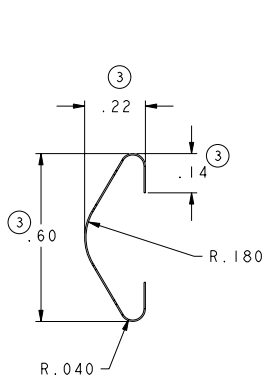
sales@integrated-circuit.com



FLAT PATTERN
SCALE 1:1



SCALE 2:1



DWG. NO.	
0077-0057-02	
REVISIONS	
ECO-E984 REMOVED RADII FROM FINGER ENDS. AD 06/16/99 EWS 06/17/99	02
ECO-E1787 ADDED TOL'S. 2PL DIM'S WAS 3PL RKM 07/21/00 EWS 7-25-00	03
ECO-E2637 ± .015 WAS ± .005 RKM 12/04/01 EWS 12/04/01	04
ECO-E2711 16.066 WAS 16.00. ADDED 16.042 RKM 01/28/02 EWS 01/28/02	05
ECO-E5328 REMOVED MATERIAL WIDTH SDH 02/22/06 EWS 03/02/06	06

MATERIAL:	.005±.0002 THICK (6) BeCu ALLOY 25 1/4 HARD
HEAT TREAT:	TO DPH 373 MIN USING A 500 GRAM LOAD
THICKNESS AFTER:	CLEANING & BEFORE PLATING .0046 MIN.
FINISH:	BRIGHT FINISH

TOLERANCES NOT SHOWN	
DECIMAL 2 PL'S	± .020
DECIMAL 3 PL'S	± .015 (4)
ANGULAR	± ---
THIRD ANGLE PROJECTION	
UNITS:	INCH [MM]
SCALE:	3:1

Laird TECHNOLOGIES		DELAWARE WATER GAP PENNSYLVANIA
DRAWN BY:	AD	DATE: 05/18/99
CHECKED:	ES	DATE: 12/04/01
APPROVED:	EWS	DATE: 05/26/99
REF. DWG. NO.	0077-0011-01	
DWG. NO.	0077-0057-02	REV 06
SHEET 1 OF 1		

THIS INFORMATION IS CONFIDENTIAL AND PROPRIETARY TO LAIRD TECHNOLOGIES.
IT MAY NOT BE DISCLOSED TO ANYONE, OTHER THAN LAIRD TECHNOLOGIES
PERSONNEL, WITHOUT WRITTEN AUTHORIZATION FROM LAIRD TECHNOLOGIES.

DWG. NO. 0077-0057-02

CAD MAINTAINED DRAWING. MANUAL CHANGES UNAUTHORIZED. ©