

## Excellent Integrated System Limited

Stocking Distributor

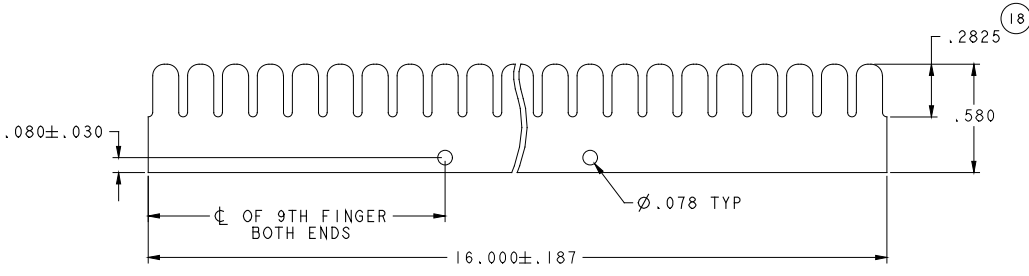
Click to view price, real time Inventory, Delivery & Lifecycle Information:

[Laird Technologies EMI](#)  
[0097061002](#)

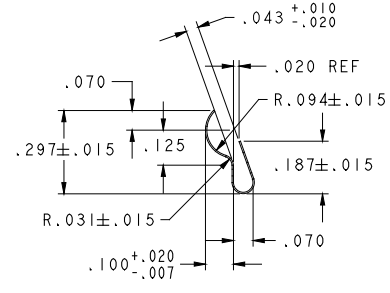
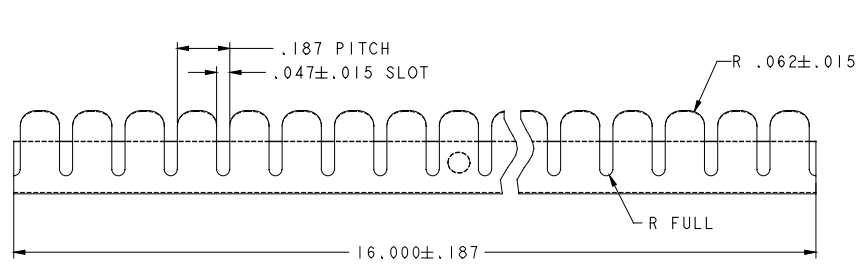
For any questions, you can email us directly:

[sales@integrated-circuit.com](mailto:sales@integrated-circuit.com)

|                                                                                             |    |
|---------------------------------------------------------------------------------------------|----|
| DWG. NO.<br>0097-0610-02                                                                    |    |
| REVISIONS                                                                                   |    |
| ECO-E4187<br>2825 DIM WAS .312<br>UPDATED TO CURRENT FORMAT<br>SDH 11/25/03<br>EWS 11/25/03 | 18 |



FLAT PATTERN  
SCALE 2:1



|                                                           |                      |                        |                           |                   |
|-----------------------------------------------------------|----------------------|------------------------|---------------------------|-------------------|
| MATERIAL:<br>.005 ± .0003 THICK<br>BeCu ALLOY Z5 1/4 HARD | TOLERANCES NOT SHOWN |                        | DRAWN BY:<br>JR           | DATE:<br>02/27/89 |
|                                                           | DECIMAL 2 PL'S ±     | DECIMAL 3 PL'S ± .010  |                           | CHECKED:<br>BJ    |
| HEAT TREAT:<br>TO DPH 373 MIN<br>USING A 500 GRAM LOAD    | ANGULAR ±            | THIRD ANGLE PROJECTION | APPROVED:<br>BJ           | DATE:<br>03/23/89 |
| THICKNESS AFTER:<br>CLEANING .0046 MIN                    |                      |                        |                           |                   |
| FINISH:<br>AS REQUIRED                                    | UNITS:<br>INCH (MM)  | SCALE:<br>3:1          | REF. DWG NO. SK-072182-AE |                   |
| CAD MAINTAINED DRAWING. MANUAL CHANGES UNAUTHORIZED.      |                      |                        | DWG. NO. 0097-0610-02     | REV 18            |

THIS INFORMATION IS CONFIDENTIAL AND PROPRIETARY TO LAIRD TECHNOLOGIES. IT MAY NOT BE DISCLOSED TO ANYONE OTHER THAN LAIRD TECHNOLOGIES PERSONNEL, WITHOUT WRITTEN AUTHORIZATION FROM LAIRD TECHNOLOGIES.

DWG. NO. 0097-0610-02



.187 PITCH CLIP-ON FINGER STOCK  
SHEET 1 OF 1