

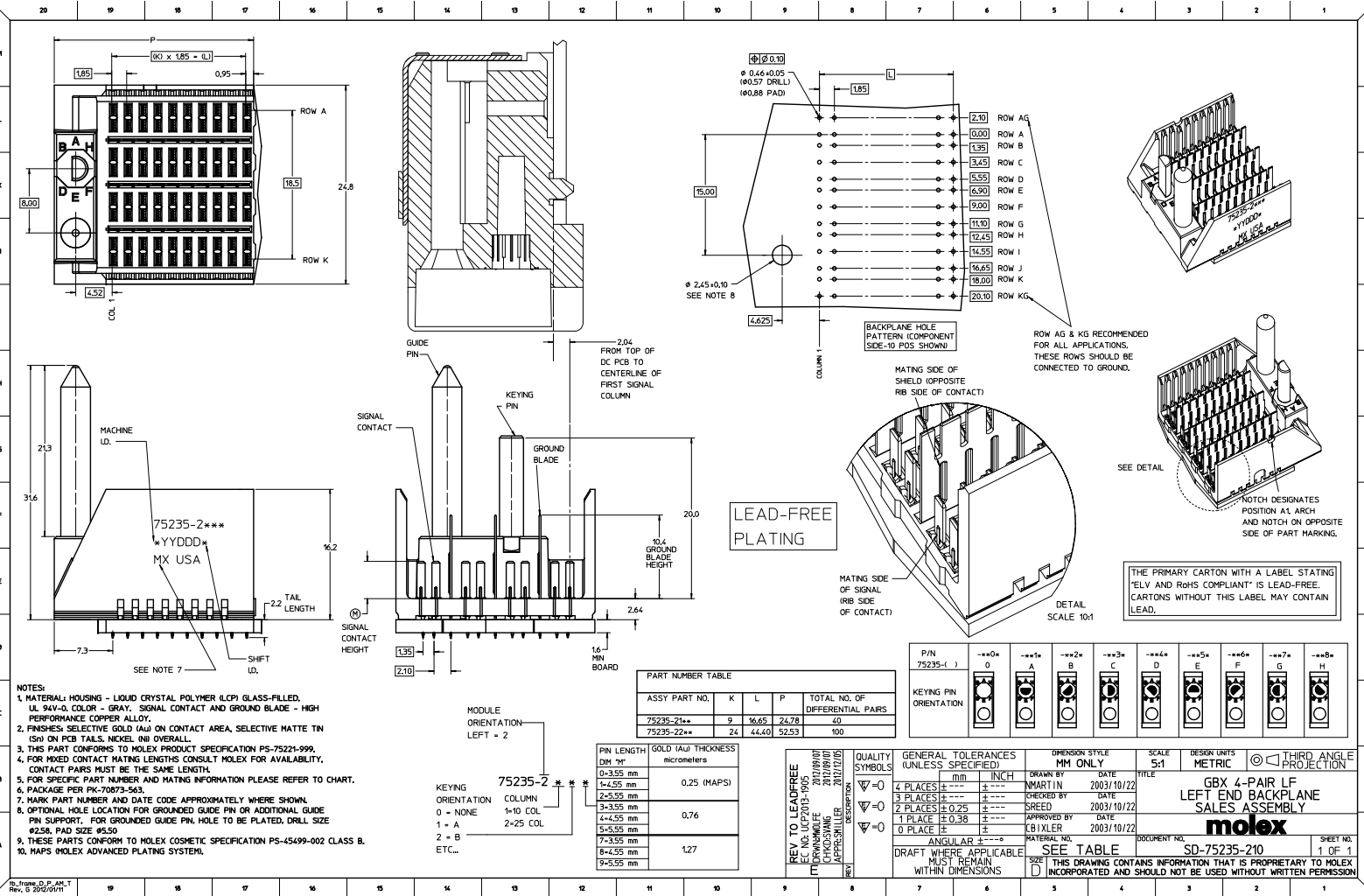
Excellent Integrated System Limited

Stocking Distributor

Click to view price, real time Inventory, Delivery & Lifecycle Information:

[Molex Connector Corporation](#)
[0752352118](#)

For any questions, you can email us directly:
sales@integrated-circuit.com



NOTES:
 1. MATERIAL: HOUSING - LIQUID CRYSTAL POLYMER (LCP) GLASS-FILLED, UL 94V-0, COLOR - GRAY, SIGNAL CONTACT AND GROUND BLADE - HIGH PERFORMANCE COPPER ALLOY.
 2. FINISHES: SELECTIVE GOLD (Au) ON CONTACT AREA, SELECTIVE MATTE TIN (Sn) ON PCB TAILS, NICKEL (Ni) OVERALL.
 3. THIS PART CONFORMS TO MOLEX PRODUCT SPECIFICATION PS-75221-999.
 4. FOR MIXED CONTACT MATING LENGTHS CONSULT MOLEX FOR AVAILABILITY, CONTACT PAIRS MUST BE THE SAME LENGTH.
 5. FOR SPECIFIC PART NUMBER AND MATING INFORMATION PLEASE REFER TO CHART.
 6. PACKAGE PER PK-70873-563.
 7. MARK PART NUMBER AND DATE CODE APPROXIMATELY WHERE SHOWN.
 8. OPTIONAL: HOLE LOCATION FOR GROUNDED GUIDE PIN OR ADDITIONAL GUIDE PIN SUPPORT, FOR GROUNDED GUIDE PIN, HOLE TO BE PLATED, DRILL SIZE #258, PAD SIZE #550.
 9. THESE PARTS CONFORM TO MOLEX COSMETIC SPECIFICATION PS-45499-002 CLASS B.
 10. MAPS: MOLEX ADVANCED PLATING SYSTEM.

PART NUMBER TABLE				
ASSY PART NO.	K	L	P	TOTAL NO. OF DIFFERENTIAL PAIRS
75235-21**	9	16.65	24.78	40
75235-22**	24	44.40	52.53	100

PIN LENGTH	GOLD (Au) THICKNESS
mm	micrometers
0-3.55 mm	0.25 (MAPS)
4-4.55 mm	
5-5.55 mm	0.76
7-7.55 mm	
8-8.55 mm	1.27
9-9.55 mm	

KEYING ORIENTATION
 0 = NONE
 1 = A
 2 = B
 ETC...

P/N	0	A	B	C	D	E	F	G	H
75235-1	0	A	B	C	D	E	F	G	H

QUALITY SYMBOLS	GENERAL TOLERANCES (UNLESS SPECIFIED)	MM ONLY	INCH	DRAWN BY	DATE	TITLE
∇=0	4 PLACES ±---	±---	±---	MARTIN	2003/10/22	GBX 4-PAIR LF LEFT END BACKPLANE SALES ASSEMBLY
∇=0	3 PLACES ±---	±---	±---	SREED	2003/10/22	
∇=0	2 PLACES ±0.25	±---	±---	APPROVED BY	DATE	
∇=0	1 PLACE ±0.38	±---	±---	CBIXLER	2003/10/22	
∇=0	0 PLACE ±---	±---	±---			

THE PRIMARY CARTON WITH A LABEL STATING "ELV AND RoHS COMPLIANT" IS LEAD-FREE. CARTONS WITHOUT THIS LABEL MAY CONTAIN LEAD.