

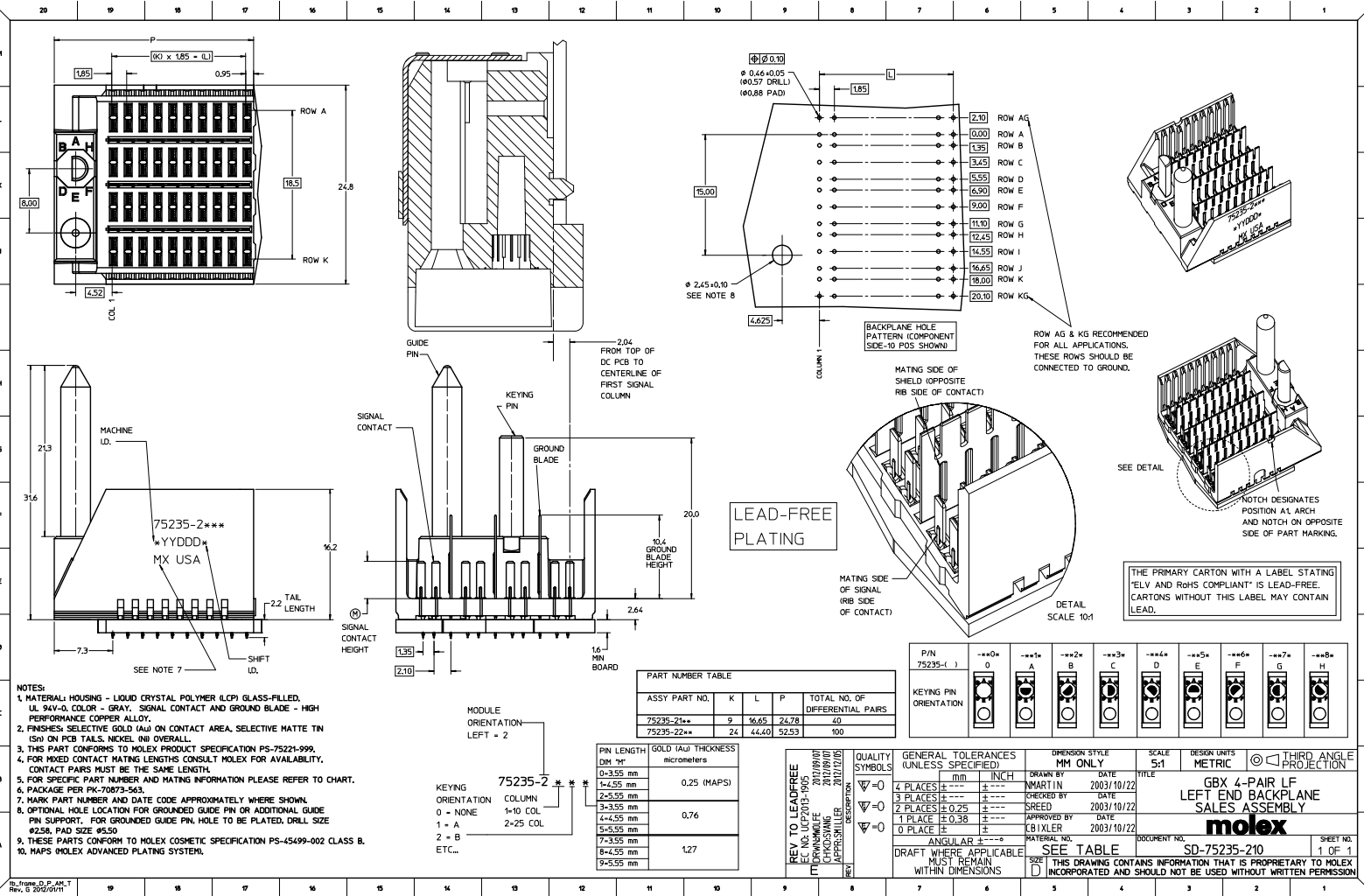
## Excellent Integrated System Limited

Stocking Distributor

Click to view price, real time Inventory, Delivery & Lifecycle Information:

[Molex Connector Corporation](#)  
[0752352187](#)

For any questions, you can email us directly:  
[sales@integrated-circuit.com](mailto:sales@integrated-circuit.com)



**NOTES:**  
 1. MATERIAL: HOUSING - LIQUID CRYSTAL POLYMER (LCP) GLASS-FILLED, UL 94V-0, COLOR - GRAY, SIGNAL CONTACT AND GROUND BLADE - HIGH PERFORMANCE COPPER ALLOY.  
 2. FINISHES: SELECTIVE GOLD (Au) ON CONTACT AREA, SELECTIVE MATTE TIN (Sn) ON PCB TAILS, NICKEL (Ni) OVERALL.  
 3. THIS PART CONFORMS TO MOLEX PRODUCT SPECIFICATION PS-75221-999.  
 4. FOR MIXED CONTACT MATING LENGTHS CONSULT MOLEX FOR AVAILABILITY, CONTACT PAIRS MUST BE THE SAME LENGTH.  
 5. FOR SPECIFIC PART NUMBER AND MATING INFORMATION PLEASE REFER TO CHART.  
 6. PACKAGE PER PK-70873-563.  
 7. MARK PART NUMBER AND DATE CODE APPROXIMATELY WHERE SHOWN.  
 8. OPTIONAL: HOLE LOCATION FOR GROUNDED GUIDE PIN OR ADDITIONAL GUIDE PIN SUPPORT, FOR GROUNDED GUIDE PIN, HOLE TO BE PLATED, DRILL SIZE #258, PAD SIZE #550.  
 9. THESE PARTS CONFORM TO MOLEX COSMETIC SPECIFICATION PS-45499-002 CLASS B.  
 10. MAPS: MOLEX ADVANCED PLATING SYSTEM.

**PART NUMBER TABLE**

ASSY PART NO.	K	L	P	TOTAL NO. OF DIFFERENTIAL PAIRS
75235-21**	9	16.65	24.78	40
75235-22**	24	44.40	52.53	100

**PIN LENGTH GOLD (Au) THICKNESS**

PIN LENGTH DIM "M"	GOLD (Au) THICKNESS micrometers
0-3.55 mm	0.25 (MAPS)
3-4.55 mm	0.25
4-5.55 mm	0.76
5-5.55 mm	0.76
7-3.55 mm	1.27
8-4.55 mm	1.27
9-5.55 mm	1.27

**REV TO LEAD-FREE**  
 EIC NO. 10/2013-005  
 DATE: 2012/09/07  
 CHOWSHANG  
 APPROVED: 2012/10/05  
 DATE: 2012/10/05

**KEYING PIN ORIENTATION**

P/N	0	A	B	C	D	E	F	G	H
75235-1	0	A	B	C	D	E	F	G	H

**QUALITY SYMBOLS**

SYMBOL	DESCRIPTION
∇=0	4 PLACES ±---
∇=0	3 PLACES ±---
∇=0	2 PLACES ±0.25 ±---
∇=0	1 PLACE ±0.38 ±---

**GENERAL TOLERANCES (UNLESS SPECIFIED):**

UNIT	TOLERANCE
mm	±0.25
inch	±0.010

**GENERAL TOLERANCES (UNLESS SPECIFIED):**

UNIT	TOLERANCE
mm	±0.25
inch	±0.010

**QUALITY SYMBOLS**

SYMBOL	DESCRIPTION
∇=0	4 PLACES ±---
∇=0	3 PLACES ±---
∇=0	2 PLACES ±0.25 ±---
∇=0	1 PLACE ±0.38 ±---

**GENERAL TOLERANCES (UNLESS SPECIFIED):**

UNIT	TOLERANCE
mm	±0.25
inch	±0.010

**QUALITY SYMBOLS**

SYMBOL	DESCRIPTION
∇=0	4 PLACES ±---
∇=0	3 PLACES ±---
∇=0	2 PLACES ±0.25 ±---
∇=0	1 PLACE ±0.38 ±---

**GENERAL TOLERANCES (UNLESS SPECIFIED):**

UNIT	TOLERANCE
mm	±0.25
inch	±0.010

**QUALITY SYMBOLS**

SYMBOL	DESCRIPTION
∇=0	4 PLACES ±---
∇=0	3 PLACES ±---
∇=0	2 PLACES ±0.25 ±---
∇=0	1 PLACE ±0.38 ±---

**GENERAL TOLERANCES (UNLESS SPECIFIED):**

UNIT	TOLERANCE
mm	±0.25
inch	±0.010

**QUALITY SYMBOLS**

SYMBOL	DESCRIPTION
∇=0	4 PLACES ±---
∇=0	3 PLACES ±---
∇=0	2 PLACES ±0.25 ±---
∇=0	1 PLACE ±0.38 ±---

**GENERAL TOLERANCES (UNLESS SPECIFIED):**

UNIT	TOLERANCE
mm	±0.25
inch	±0.010

**QUALITY SYMBOLS**

SYMBOL	DESCRIPTION
∇=0	4 PLACES ±---
∇=0	3 PLACES ±---
∇=0	2 PLACES ±0.25 ±---
∇=0	1 PLACE ±0.38 ±---

**GENERAL TOLERANCES (UNLESS SPECIFIED):**

UNIT	TOLERANCE
mm	±0.25
inch	±0.010

**QUALITY SYMBOLS**

SYMBOL	DESCRIPTION
∇=0	4 PLACES ±---
∇=0	3 PLACES ±---
∇=0	2 PLACES ±0.25 ±---
∇=0	1 PLACE ±0.38 ±---

**GENERAL TOLERANCES (UNLESS SPECIFIED):**

UNIT	TOLERANCE
mm	±0.25
inch	±0.010

**QUALITY SYMBOLS**

SYMBOL	DESCRIPTION
∇=0	4 PLACES ±---
∇=0	3 PLACES ±---
∇=0	2 PLACES ±0.25 ±---
∇=0	1 PLACE ±0.38 ±---

**GENERAL TOLERANCES (UNLESS SPECIFIED):**

UNIT	TOLERANCE
mm	±0.25
inch	±0.010

**QUALITY SYMBOLS**

SYMBOL	DESCRIPTION
∇=0	4 PLACES ±---
∇=0	3 PLACES ±---
∇=0	2 PLACES ±0.25 ±---
∇=0	1 PLACE ±0.38 ±---

**GENERAL TOLERANCES (UNLESS SPECIFIED):**

UNIT	TOLERANCE
mm	±0.25
inch	±0.010

**QUALITY SYMBOLS**

SYMBOL	DESCRIPTION
∇=0	4 PLACES ±---
∇=0	3 PLACES ±---
∇=0	2 PLACES ±0.25 ±---
∇=0	1 PLACE ±0.38 ±---

**GENERAL TOLERANCES (UNLESS SPECIFIED):**

UNIT	TOLERANCE
mm	±0.25
inch	±0.010

**QUALITY SYMBOLS**

SYMBOL	DESCRIPTION
∇=0	4 PLACES ±---
∇=0	3 PLACES ±---
∇=0	2 PLACES ±0.25 ±---
∇=0	1 PLACE ±0.38 ±---

**GENERAL TOLERANCES (UNLESS SPECIFIED):**

UNIT	TOLERANCE
mm	±0.25
inch	±0.010

**QUALITY SYMBOLS**

SYMBOL	DESCRIPTION
∇=0	4 PLACES ±---
∇=0	3 PLACES ±---
∇=0	2 PLACES ±0.25 ±---
∇=0	1 PLACE ±0.38 ±---

**GENERAL TOLERANCES (UNLESS SPECIFIED):**

UNIT	TOLERANCE
mm	±0.25
inch	±0.010

**QUALITY SYMBOLS**

SYMBOL	DESCRIPTION
∇=0	4 PLACES ±---
∇=0	3 PLACES ±---
∇=0	2 PLACES ±0.25 ±---
∇=0	1 PLACE ±0.38 ±---

**GENERAL TOLERANCES (UNLESS SPECIFIED):**

UNIT	TOLERANCE
mm	±0.25
inch	±0.010

**QUALITY SYMBOLS**

SYMBOL	DESCRIPTION
∇=0	4 PLACES ±---
∇=0	3 PLACES ±---
∇=0	2 PLACES ±0.25 ±---
∇=0	1 PLACE ±0.38 ±---

**GENERAL TOLERANCES (UNLESS SPECIFIED):**

UNIT	TOLERANCE
mm	±0.25
inch	±0.010

**QUALITY SYMBOLS**

SYMBOL	DESCRIPTION
∇=0	4 PLACES ±---
∇=0	3 PLACES ±---
∇=0	2 PLACES ±0.25 ±---
∇=0	1 PLACE ±0.38 ±---

**GENERAL TOLERANCES (UNLESS SPECIFIED):**

UNIT	TOLERANCE
mm	±0.25
inch	±0.010

**QUALITY SYMBOLS**

SYMBOL	DESCRIPTION
∇=0	4 PLACES ±---
∇=0	3 PLACES ±---
∇=0	2 PLACES ±0.25 ±---
∇=0	1 PLACE ±0.38 ±---

**GENERAL TOLERANCES (UNLESS SPECIFIED):**

UNIT	TOLERANCE
mm	±0.25
inch	±0.010

**QUALITY SYMBOLS**

SYMBOL	DESCRIPTION
∇=0	4 PLACES ±---
∇=0	3 PLACES ±---
∇=0	2 PLACES ±0.25 ±---
∇=0	1 PLACE ±0.38 ±---

**GENERAL TOLERANCES (UNLESS SPECIFIED):**

UNIT	TOLERANCE
mm	±0.25
inch	±0.010

**QUALITY SYMBOLS**

SYMBOL	DESCRIPTION
∇=0	4 PLACES ±---
∇=0	3 PLACES ±---
∇=0	2 PLACES ±0.25 ±---
∇=0	1 PLACE ±0.38 ±---

**GENERAL TOLERANCES (UNLESS SPECIFIED):**

UNIT	TOLERANCE
mm	±0.25
inch	±0.010

**QUALITY SYMBOLS**

SYMBOL	DESCRIPTION
∇=0	4 PLACES ±---
∇=0	3 PLACES ±---
∇=0	2 PLACES ±0.25 ±---
∇=0	1 PLACE ±0.38 ±---

**GENERAL TOLERANCES (UNLESS SPECIFIED):**

UNIT	TOLERANCE
mm	±0.25
inch	±0.010

**QUALITY SYMBOLS**

SYMBOL	DESCRIPTION
∇=0	4 PLACES ±---
∇=0	3 PLACES ±---
∇=0	2 PLACES ±0.25 ±---
∇=0	1 PLACE ±0.38 ±---

**GENERAL TOLERANCES (UNLESS SPECIFIED):**

UNIT	TOLERANCE
mm	±0.25
inch	±0.010

**QUALITY SYMBOLS**

SYMBOL	DESCRIPTION
∇=0	4 PLACES ±---
∇=0	3 PLACES ±---
∇=0	2 PLACES ±0.25 ±---
∇=0	1 PLACE ±0.38 ±---

**GENERAL TOLERANCES (UNLESS SPECIFIED):**

UNIT	TOLERANCE
mm	±0.25
inch	±0.010

**QUALITY SYMBOLS**

SYMBOL	DESCRIPTION
∇=0	4 PLACES ±---
∇=0	3 PLACES ±---
∇=0	2 PLACES ±0.25 ±---
∇=0	1 PLACE ±0.38 ±---

**GENERAL TOLERANCES (UNLESS SPECIFIED):**

UNIT	TOLERANCE
mm	±0.25
inch	±0.010

**QUALITY SYMBOLS**

SYMBOL	DESCRIPTION
∇=0	4 PLACES ±---
∇=0	3 PLACES ±---
∇=0	2 PLACES ±0.25 ±---
∇=0	1 PLACE ±0.38 ±---

**GENERAL TOLERANCES (UNLESS SPECIFIED):**

UNIT	TOLERANCE
mm	±0.25
inch	±0.010

**QUALITY SYMBOLS**

SYMBOL	DESCRIPTION
∇=0	4 PLACES ±---
∇=0	3 PLACES ±---
∇=0	2 PLACES ±0.25 ±---
∇=0	1 PLACE ±0.38 ±---

**GENERAL TOLERANCES (UNLESS SPECIFIED):**

UNIT	TOLERANCE
mm	±0.25
inch	±0.010

**QUALITY SYMBOLS**

SYMBOL	DESCRIPTION
∇=0	4 PLACES ±---
∇=0	3 PLACES ±---
∇=0	2 PLACES ±0.25 ±---
∇=0	1 PLACE ±0.38 ±---

**GENERAL TOLERANCES (UNLESS SPECIFIED):**

UNIT	TOLERANCE
mm	±0.25
inch	±0.010

**QUALITY SYMBOLS**

SYMBOL	DESCRIPTION
∇=0	4 PLACES ±---
∇=0	3 PLACES ±---
∇=0	2 PLACES ±0.25 ±---
∇=0	1 PLACE ±0.38 ±---

**GENERAL TOLERANCES (UNLESS SPECIFIED):**

UNIT	TOLERANCE
mm	±0.25
inch	±0.010

**QUALITY SYMBOLS**

SYMBOL	DESCRIPTION
∇=0	4 PLACES ±---
∇=0	3 PLACES ±---
∇=0	2 PLACES ±0.25 ±---
∇=0	1 PLACE ±0.38 ±---

**GENERAL TOLERANCES (UNLESS SPECIFIED):**

UNIT	TOLERANCE
mm	±0.25
inch	±0.010

**QUALITY SYMBOLS**

SYMBOL	DESCRIPTION
∇=0	4 PLACES ±---
∇=0	3 PLACES ±---
∇=0	2 PLACES ±0.25 ±---
∇=0	1 PLACE ±0.38 ±---

**GENERAL TOLERANCES (UNLESS SPECIFIED):**

UNIT	TOLERANCE
mm	±0.25
inch	±0.010

**QUALITY SYMBOLS**

SYMBOL	DESCRIPTION
∇=0	4 PLACES ±---
∇=0	3 PLACES ±---
∇=0	2 PLACES ±0.25 ±---
∇=0	1 PLACE ±0.38 ±---

**GENERAL TOLERANCES (UNLESS SPECIFIED):**

UNIT	TOLERANCE
mm	±0.25
inch	±0.010

**QUALITY SYMBOLS**

SYMBOL	DESCRIPTION
∇=0	4 PLACES ±---
∇=0	3 PLACES ±---
∇=0	2 PLACES ±0.25 ±---
∇=0	1 PLACE ±0.38 ±---

**GENERAL TOLERANCES (UNLESS SPECIFIED):**

UNIT	TOLERANCE
mm	±0.25
inch	±0.010

**QUALITY SYMBOLS**

SYMBOL	DESCRIPTION
∇=0	4 PLACES ±---
∇=0	3 PLACES ±---
∇=0	2 PLACES ±0.25 ±---
∇=0	1 PLACE ±0.38 ±---

**GENERAL TOLERANCES (UNLESS SPECIFIED):**

UNIT	TOLERANCE
mm	±0.25
inch	±0.010

**QUALITY SYMBOLS**

SYMBOL	DESCRIPTION
∇=0	4 PLACES ±---
∇=0	3 PLACES ±---
∇=0	2 PLACES ±0.25 ±---
∇=0	1 PLACE ±0.38 ±---

**GENERAL TOLERANCES (UNLESS SPECIFIED):**

UNIT	TOLERANCE
mm	±0.25
inch	±0.010

**QUALITY SYMBOLS**

SYMBOL	DESCRIPTION
∇=0	4 PLACES ±---
∇=0	3 PLACES ±---
∇=0	2 PLACES ±0.25 ±---
∇=0	1 PLACE ±0.38 ±---

**GENERAL TOLERANCES (UNLESS SPECIFIED):**

UNIT	TOLERANCE
mm	±0.25
inch	±0.010

**QUALITY SYMBOLS**

SYMBOL	DESCRIPTION
∇=0	4 PLACES ±---
∇=0	3 PLACES ±---
∇=0	2 PLACES ±0.25 ±---
∇=0	1 PLACE ±0.38 ±---

**GENERAL TOLERANCES (UNLESS SPECIFIED):**

UNIT	TOLERANCE
mm	±0.25
inch	±0.010

**QUALITY SYMBOLS**

SYMBOL	DESCRIPTION
∇=0	4 PLACES ±---
∇=0	3 PLACES ±---
∇=0	2 PLACES ±0.25 ±---
∇=0	1 PLACE ±0.38 ±---

**GENERAL TOLERANCES (UNLESS SPECIFIED):**

UNIT	TOLERANCE
mm	±0.25
inch	±0.010

**QUALITY SYMBOLS**

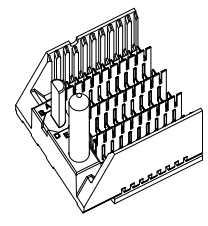
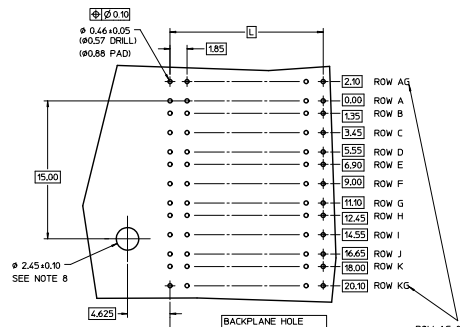
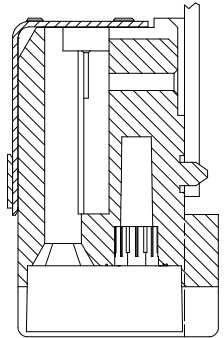
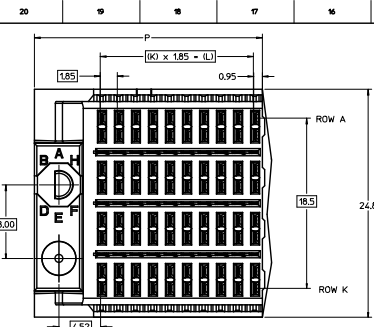
SYMBOL	DESCRIPTION
∇=0	4 PLACES ±---
∇=0	3 PLACES ±---
∇=0	2 PLACES ±0.25 ±---
∇=0	1 PLACE ±0.38 ±---

**GENERAL TOLERANCES (UNLESS SPECIFIED):**

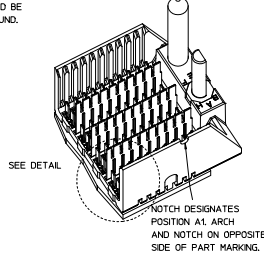
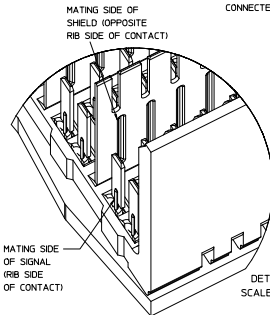
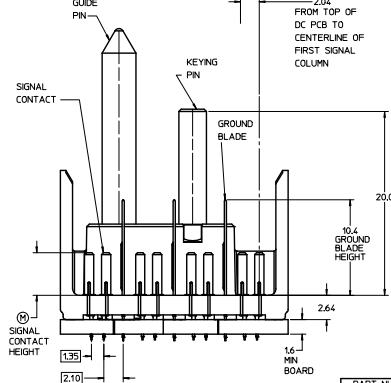
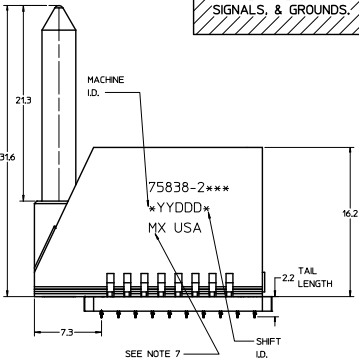
UNIT	TOLERANCE
mm	±0.25
inch	±0.010

**QUALITY SYMBOLS**

SYMBOL	DESCRIPTION
∇=0	4 PLACES ±---
∇=0	



**LEAD-FREE PLATING ON SIGNALS, & GROUNDS.**



- NOTES:**
1. MATERIAL: HOUSING - LIQUID CRYSTAL POLYMER (LCP) GLASS-FILLED, UL 94V-0, COLOR - GRAY, SIGNAL CONTACT AND GROUND BLADE - HIGH PERFORMANCE COPPER ALLOY.
  2. FINISHES: SELECTIVE GOLD (Au) 0.25 (MAPS), 0.76, OR 1.27 micrometers THICKNESS ON CONTACT AREA, SELECTIVE MATTE TIN (Sn) ON PCB TAILS, NICKEL (Ni) OVERALL.
  3. THIS PART CONFORMS TO MOLEX PRODUCT SPECIFICATION PS-75231-999.
  4. FOR MIXED CONTACT MATING LENGTHS CONSULT MOLEX FOR AVAILABILITY, CONTACT PAIRS MUST BE THE SAME LENGTH.
  5. FOR SPECIFIC PART NUMBER AND MATING INFORMATION PLEASE REFER TO CHART.
  6. PACKAGE PER PK-70873-563.
  7. EITHER MARK PART NUMBER AND DATE CODE APPROXIMATELY WHERE SHOWN OR PLACE A LABEL ON THE TUBE.
  8. OPTIONAL HOLE LOCATION FOR GROUNDED GUIDE PIN OR ADDITIONAL GUIDE PIN SUPPORT, FOR GROUNDED GUIDE PIN HOLE TO BE PLATED, DRILL SIZE #258, PAD SIZE #550.
  9. THESE PARTS CONFORM TO MOLEX COSMETIC SPECIFICATION PS-45499-02 CLASS B.

PART NUMBER TABLE				
ASSY PART NO.	K	L	P	TOTAL NO. OF DIFFERENTIAL PAIRS
75838-21**	9	16.65	24.78	20
75838-22**	24	44.40	52.53	100

P/N	**0*	**1*	**2*	**3*	**4*	**5*	**6*	**7*	**8*
75838-( )	0	A	B	C	D	E	F	G	H

KEYING PIN ORIENTATION

PIN LENGTH	GOLD (Au) THICKNESS
DIM "M"	micrometers
0-3.55 mm	0.25
1-4.25 mm	
2-5.55 mm	
3-3.55 mm	0.76
4-4.55 mm	
7-3.55 mm	
8-4.55 mm	1.27
9-5.55 mm	

ADD MAPS PLATING EC NO. ICP/2002-3688 DRAWN/DATE 2007/05/16 CHOCOMALLEY 2007/05/16 APPROVALS/DATE

QUALITY SYMBOLS	GENERAL TOLERANCES (UNLESS SPECIFIED)	DIMENSION STYLE	SCALE	DESIGN UNITS	THIRD ANGLE PROJECTION
∇=0	4 PLACES ±--- ±---	MM ONLY	5:1	METRIC	☉
∇=0	3 PLACES ±--- ±---				
∇=0	2 PLACES ±0.25 ±---				
∇=0	1 PLACE ±0.38 ±---				
∇=0	0 PLACE ±--- ±---				

ANGULAR ±---

DRAFT WHERE APPLICABLE MUST REMAIN WITHIN DIMENSIONS

SEE TABLE

INCORPORATED AND SHOULD NOT BE USED WITHOUT WRITTEN PERMISSION

DOCUMENT NO. SD-75838-210

TITLE: GBX 4-PAIR LEFT END BACKPLANE ASSEMBLY LEAD-FREE SALES DRAWING

**molex**

SHEET NO. 1 OF 1