

## Excellent Integrated System Limited

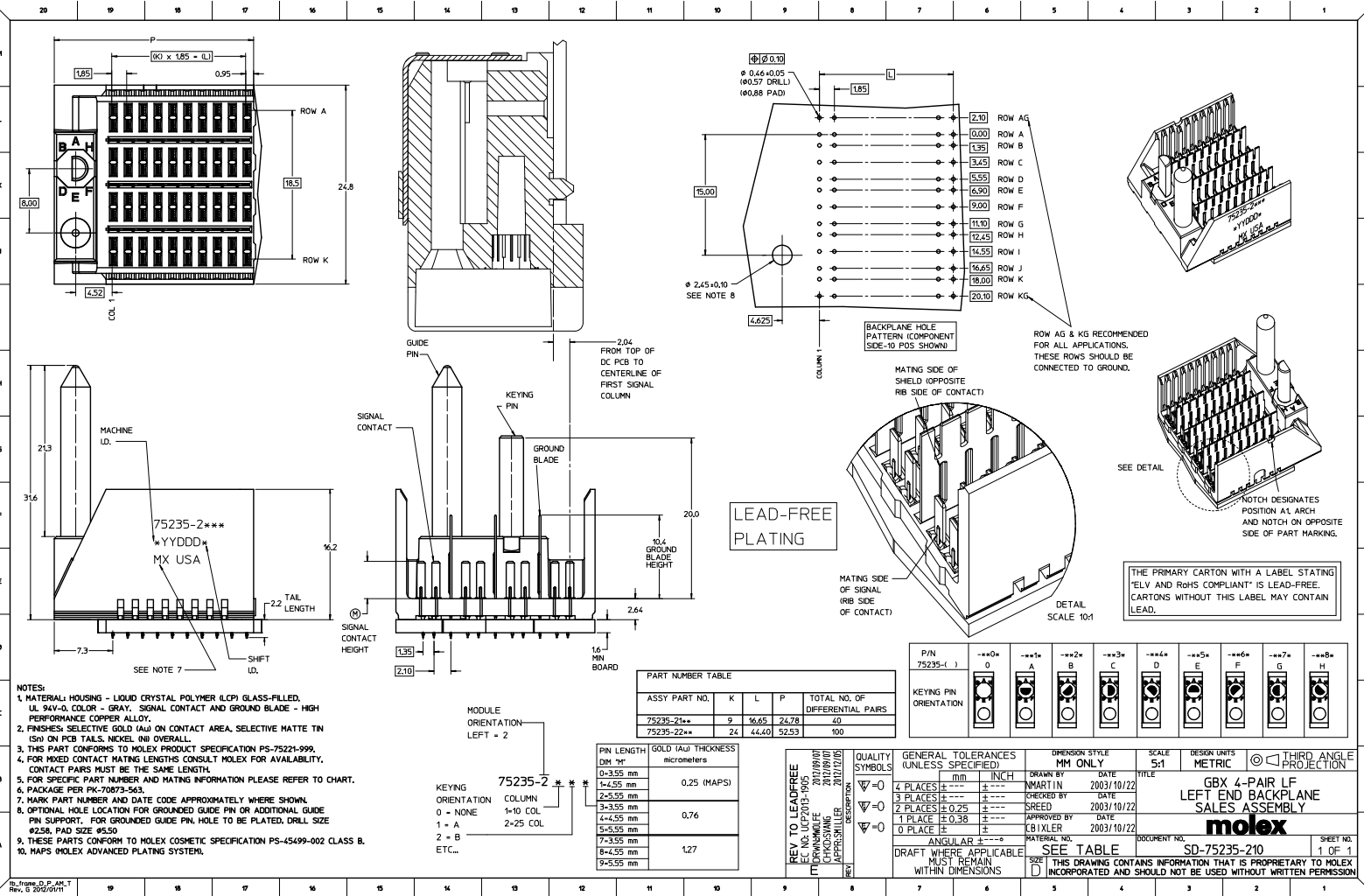
Stocking Distributor

Click to view price, real time Inventory, Delivery & Lifecycle Information:

[Molex Connector Corporation](#)  
[0752352235](#)

For any questions, you can email us directly:

[sales@integrated-circuit.com](mailto:sales@integrated-circuit.com)



**NOTES:**  
 1. MATERIAL: HOUSING - LIQUID CRYSTAL POLYMER (LCP) GLASS-FILLED, UL 94V-0, COLOR - GRAY, SIGNAL CONTACT AND GROUND BLADE - HIGH PERFORMANCE COPPER ALLOY.  
 2. FINISHES: SELECTIVE GOLD (Au) ON CONTACT AREA, SELECTIVE MATTE TIN (Sn) ON PCB TAILS, NICKEL (Ni) OVERALL.  
 3. THIS PART CONFORMS TO MOLEX PRODUCT SPECIFICATION PS-75221-999.  
 4. FOR MIXED CONTACT MATING LENGTHS CONSULT MOLEX FOR AVAILABILITY, CONTACT PAIRS MUST BE THE SAME LENGTH.  
 5. FOR SPECIFIC PART NUMBER AND MATING INFORMATION PLEASE REFER TO CHART.  
 6. PACKAGE PER PK-70873-563.  
 7. MARK PART NUMBER AND DATE CODE APPROXIMATELY WHERE SHOWN.  
 8. OPTIONAL: HOLE LOCATION FOR GROUNDED GUIDE PIN OR ADDITIONAL GUIDE PIN SUPPORT, FOR GROUNDED GUIDE PIN, HOLE TO BE PLATED, DRILL SIZE #258, PAD SIZE #550.  
 9. THESE PARTS CONFORM TO MOLEX COSMETIC SPECIFICATION PS-45499-002 CLASS B.  
 10. MAPS: MOLEX ADVANCED PLATING SYSTEM.

**PART NUMBER TABLE**

ASSY PART NO.	K	L	P	TOTAL NO. OF DIFFERENTIAL PAIRS
75235-21**	9	16.65	24.78	40
75235-22**	24	44.40	52.53	100

**PIN LENGTH GOLD (Au) THICKNESS**

PIN LENGTH (mm)	GOLD (Au) THICKNESS (micrometers)
0-3.55 mm	0.25 (MAPS)
4-4.55 mm	0.25 (MAPS)
5-5.55 mm	0.76
7-7.55 mm	1.27
8-8.55 mm	1.27
9-9.55 mm	1.27

**REV TO LEAD-FREE**  
 EIC NO. 10/2013-005  
 DATE: 2012/09/07  
 CHENGSHANG  
 APPROVED: 2012/10/05  
 DATE: 2012/10/05

**KEYING PIN ORIENTATION**

P/N	0	A	B	C	D	E	F	G	H
75235-1	0	A	B	C	D	E	F	G	H

**QUALITY SYMBOLS**

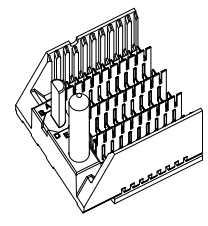
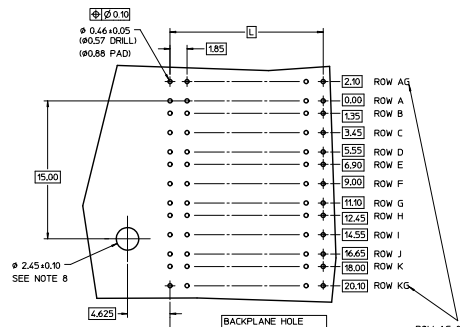
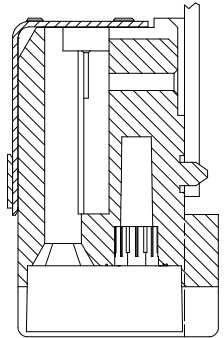
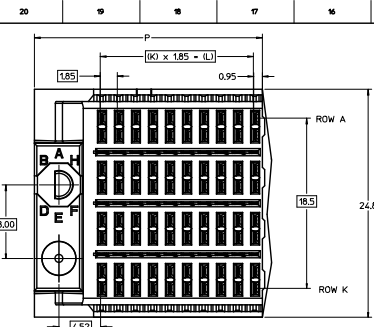
SYMBOL	DESCRIPTION
∇=0	4 PLACES ±---
∇=0	3 PLACES ±---
∇=0	2 PLACES ±0.25 ±---
∇=0	1 PLACE ±0.38 ±---

**GENERAL TOLERANCES (UNLESS SPECIFIED):**  
 DIMENSION STYLE: MM ONLY  
 SCALE: 5:1  
 DESIGN UNITS: METRIC  
 THIRD ANGLE PROJECTION

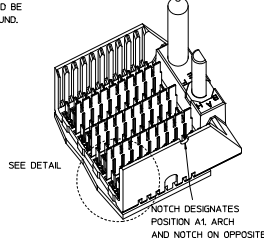
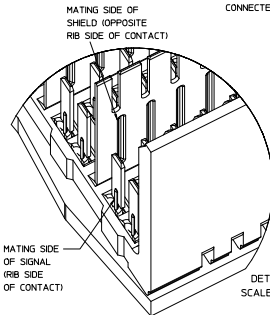
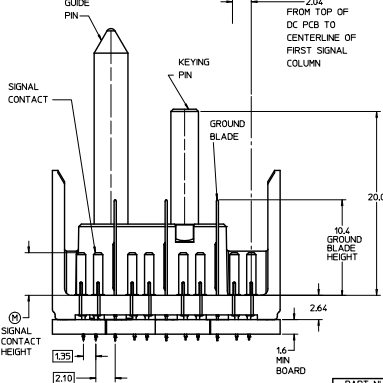
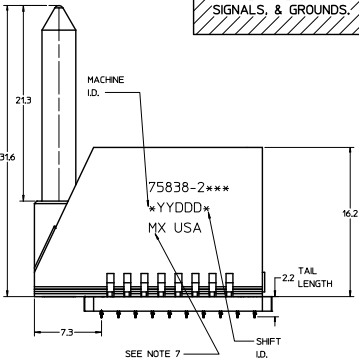
**DATE**  
 DRAWN BY: MARTIN 2003/10/22  
 CHECKED BY: SREED 2003/10/22  
 APPROVED BY: CBIXLER 2003/10/22

**DOCUMENT NO. SD-75235-210**

**THE PRIMARY CARTON WITH A LABEL STATING "ELV AND RoHS COMPLIANT" IS LEAD-FREE. CARTONS WITHOUT THIS LABEL MAY CONTAIN LEAD.**



LEAD-FREE PLATING ON SIGNALS, & GROUNDS.



- NOTES:
1. MATERIAL: HOUSING - LIQUID CRYSTAL POLYMER (LCP) GLASS-FILLED, UL 94V-0, COLOR - GRAY, SIGNAL CONTACT AND GROUND BLADE - HIGH PERFORMANCE COPPER ALLOY.
  2. FINISHES: SELECTIVE GOLD (Au) 0.25 (INAPS), 0.76, OR 1.27 micrometers THICKNESS ON CONTACT AREA, SELECTIVE MATTE TIN (Sn) ON PCB TAILS, NICKEL (Ni) OVERALL.
  3. THIS PART CONFORMS TO MOLEX PRODUCT SPECIFICATION PS-75231-999.
  4. FOR MIXED CONTACT MATING LENGTHS CONSULT MOLEX FOR AVAILABILITY, CONTACT Pairs MUST BE THE SAME LENGTH.
  5. FOR SPECIFIC PART NUMBER AND MATING INFORMATION PLEASE REFER TO CHART.
  6. PACKAGE PER PK-70873-563.
  7. EITHER MARK PART NUMBER AND DATE CODE APPROXIMATELY WHERE SHOWN OR PLACE A LABEL ON THE TUBE.
  8. OPTIONAL HOLE LOCATION FOR GROUNDED GUIDE PIN OR ADDITIONAL GUIDE PIN SUPPORT, FOR GROUNDED GUIDE PIN HOLE TO BE PLATED, DRILL SIZE Ø2.58, PAD SIZE Ø5.50.
  9. THESE PARTS CONFORM TO MOLEX COSMETIC SPECIFICATION PS-45499-02 CLASS B.

PART NUMBER TABLE				
ASSY PART NO.	K	L	P	TOTAL NO. OF DIFFERENTIAL PAIRS
75838-21**	9	16.65	24.78	20
75838-22**	24	44.40	52.53	100

P/N	**0*	**1*	**2*	**3*	**4*	**5*	**6*	**7*	**8*
75838-( )	0	A	B	C	D	E	F	G	H

PIN LENGTH	GOLD (Au) THICKNESS
DIM "M"	micrometers
0-3.55 mm	0.25
1-4.25 mm	
2-5.55 mm	
3-3.55 mm	0.76
4-4.55 mm	
5-5.55 mm	
7-3.55 mm	
8-4.55 mm	1.27
9-5.55 mm	

ADD MAPS PLATING EC NO. ICP/2002-3688 DRAWN/DATE 2007/05/16 CHOCOMALLEY 2007/05/16 APPROVALS/DATE

QUALITY SYMBOLS	GENERAL TOLERANCES (UNLESS SPECIFIED)	DIMENSION STYLE	SCALE	DESIGN UNITS	THIRD ANGLE PROJECTION
∇=0	4 PLACES ±--- ±---	MM ONLY	5:1	METRIC	THIRD ANGLE PROJECTION
∇=0	3 PLACES ±--- ±---				
∇=0	2 PLACES ±0.25 ±---				
∇=0	1 PLACE ±0.38 ±---				
∇=0	0 PLACE ±--- ±---				

DOCUMENT NO. SD-75838-210 SHEET NO. 1 OF 1

**molex**

GBX 4-PAIR LEFT END BACKPLANE ASSEMBLY LEAD-FREE SALES DRAWING