

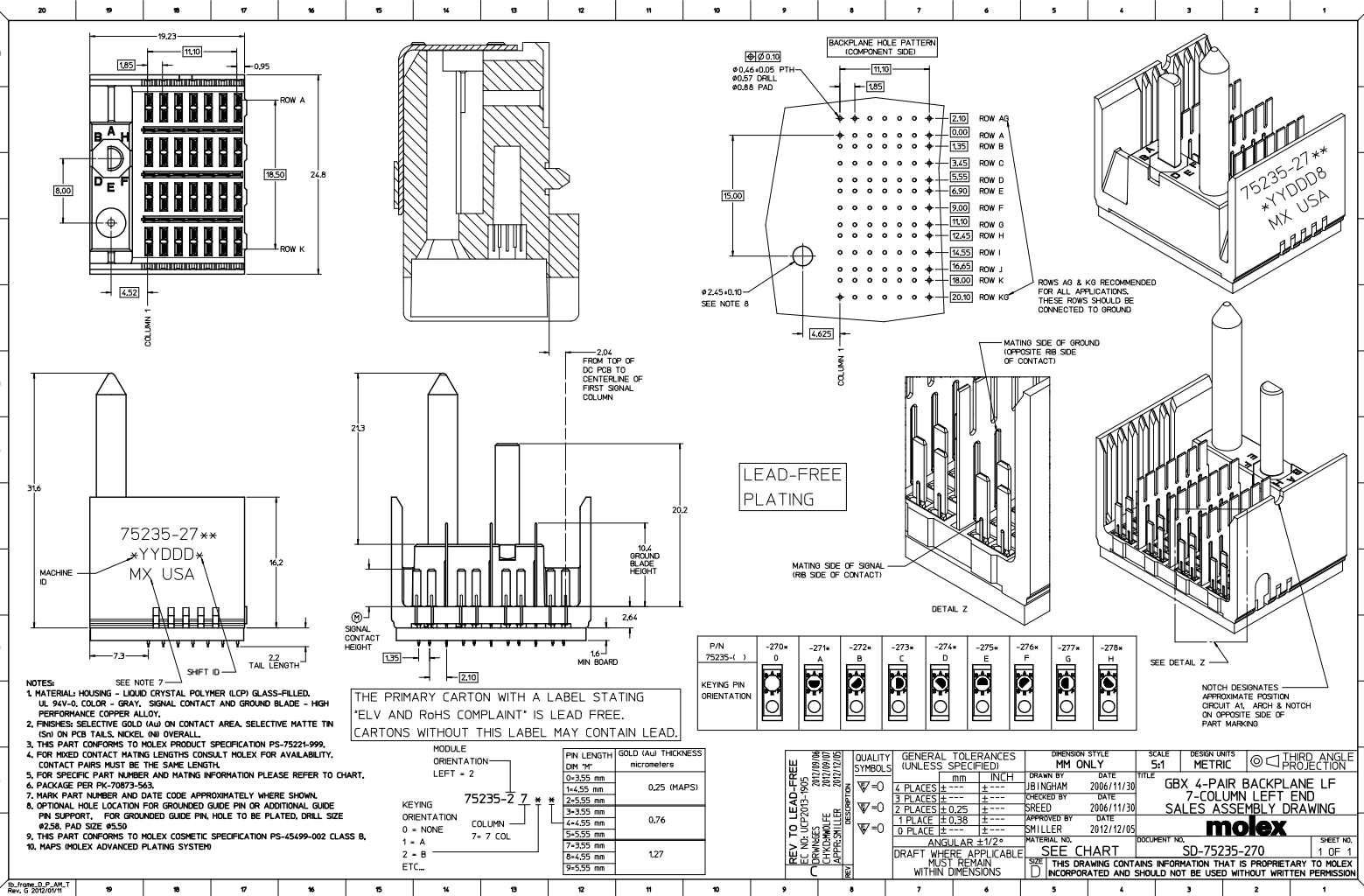
Excellent Integrated System Limited

Stocking Distributor

Click to view price, real time Inventory, Delivery & Lifecycle Information:

[Molex Connector Corporation](#)
[0752352724](#)

For any questions, you can email us directly:
sales@integrated-circuit.com



NOTES:
 1. MATERIAL: HOUSING - LIQUID CRYSTAL POLYMER (LCP) GLASS-FILLED, UL 94V-0, COLOR - GRAY, SIGNAL CONTACT AND GROUND BLADE - HIGH PERFORMANCE COPPER ALLOY.
 2. FINISHES: SELECTIVE GOLD (Au) ON CONTACT AREA, SELECTIVE MATTE TIN (Sn) ON PCB TAILS, NICKEL (Ni) OVERALL.
 3. THIS PART CONFORMS TO MOLEX PRODUCT SPECIFICATION PS-75221-999.
 4. FOR MIXED CONTACT MATING LENGTHS CONSULT MOLEX FOR AVAILABILITY. CONTACT PAIRS MUST BE THE SAME LENGTH.
 5. FOR SPECIFIC PART NUMBER AND MATING INFORMATION PLEASE REFER TO CHART.
 6. PACKAGE PER PK-70873-963.
 7. MARK PART NUMBER AND DATE CODE APPROXIMATELY WHERE SHOWN.
 8. OPTIONAL HOLE LOCATION FOR GROUNDED GUIDE PIN OR ADDITIONAL GUIDE PIN SUPPORT. FOR GROUNDED GUIDE PIN, HOLE TO BE PLATED, DRILL SIZE #258, PAD SIZE #650.
 9. THIS PART CONFORMS TO MOLEX COSMETIC SPECIFICATION PS-45499-002 CLASS B.
 10. MAPS (MOLEX ADVANCED PLATING SYSTEM)

THE PRIMARY CARTON WITH A LABEL STATING 'ELV AND RoHS COMPLIANT' IS LEAD FREE. CARTONS WITHOUT THIS LABEL MAY CONTAIN LEAD.

MODULE ORIENTATION	PIN LENGTH DIM "M"	GOLD (Au) THICKNESS micrometers
LEFT = 2	0-3.55 mm	0.25 (MAPS)
	1-4.55 mm	
	2-5.55 mm	
	3-3.55 mm	0.76
	4-4.55 mm	
RIGHT = 1	5-5.55 mm	
	6-4.55 mm	1.27
	9-5.35 mm	

P/N	-270*	-271*	-272*	-273*	-274*	-275*	-276*	-277*	-278*
75235-(L)	0	A	B	C	D	E	F	G	H
KEYING PIN ORIENTATION									

REV TO LEAD-FREE	QUALITY SYMBOLS	GENERAL TOLERANCES (UNLESS SPECIFIED)	DIMENSION STYLE	SCALE	DESIGN UNITS	THIRD ANGLE PROJECTION
REV 1: 07/07/05 REV 2: 07/07/05 REV 3: 07/07/05 REV 4: 07/07/05 REV 5: 07/07/05 REV 6: 07/07/05 REV 7: 07/07/05 REV 8: 07/07/05 REV 9: 07/07/05 REV 10: 07/07/05 REV 11: 07/07/05 REV 12: 07/07/05 REV 13: 07/07/05 REV 14: 07/07/05 REV 15: 07/07/05 REV 16: 07/07/05 REV 17: 07/07/05 REV 18: 07/07/05 REV 19: 07/07/05 REV 20: 07/07/05	4 PLACES ±0.10 3 PLACES ±0.15 2 PLACES ±0.25 1 PLACE ±0.38 0 PLACE ±0.50	mm INCH	MM ONLY	5:1	METRIC	DRAWN BY: J. BINGHAM CHECKED BY: SREED APPROVED BY: SMILLER DATE: 2006/11/30 DATE: 2006/11/30 DATE: 2012/12/05

NOTCH DESIGNATES APPROXIMATE POSITION CIRCUIT A1, ARCH & NOTCH ON OPPOSITE SIDE OF PART MARKING