

Excellent Integrated System Limited

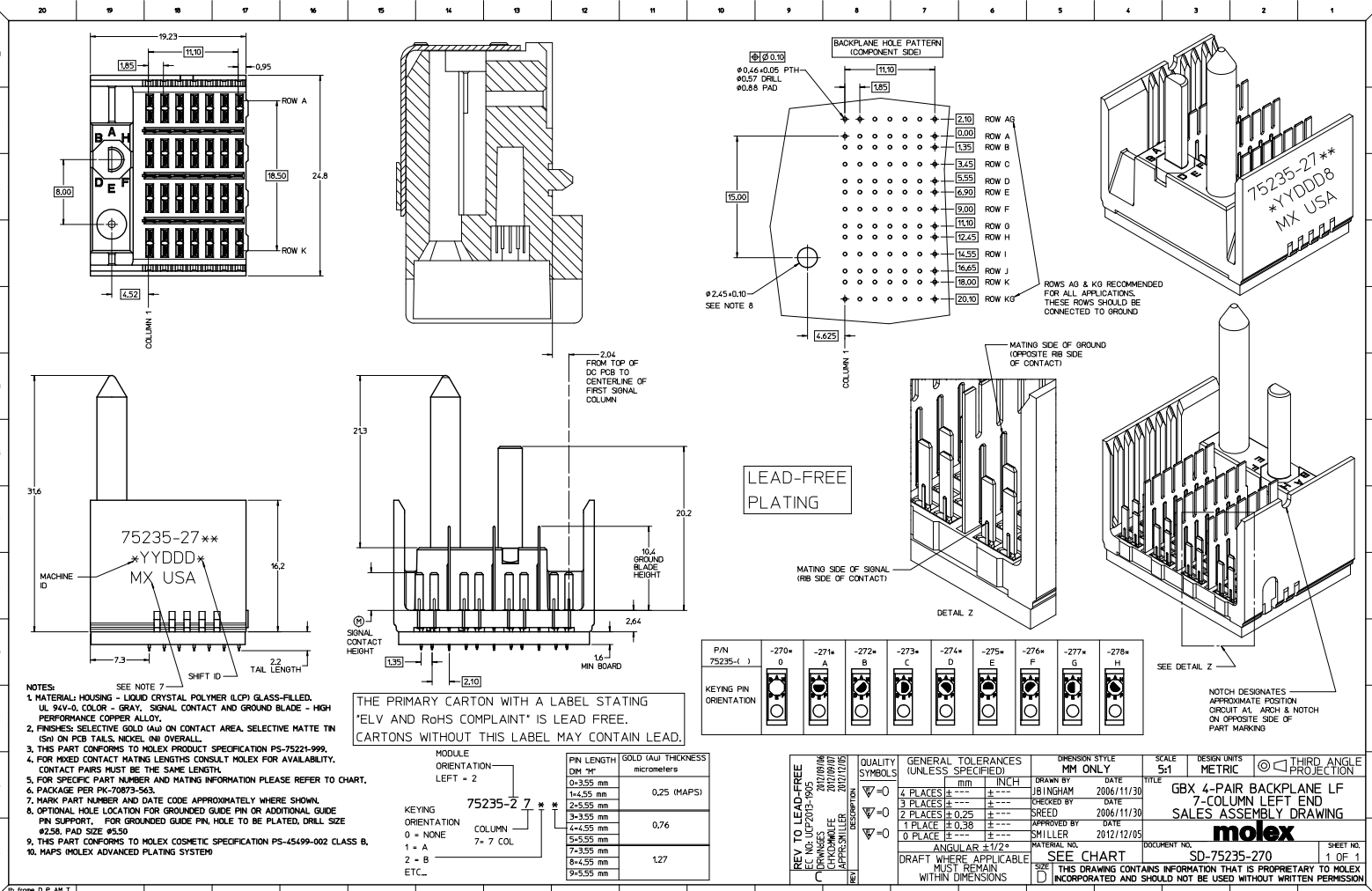
Stocking Distributor

Click to view price, real time Inventory, Delivery & Lifecycle Information:

[Molex Connector Corporation](#)
[0752352728](#)

For any questions, you can email us directly:

sales@integrated-circuit.com



- NOTES:
1. MATERIAL: HOUSING - LIQUID CRYSTAL POLYMER (LCP) GLASS-FILLED, UL 94V-0, COLOR - GRAY, SIGNAL CONTACT AND GROUND BLADE - HIGH PERFORMANCE COPPER ALLOY.
 2. FINISHES: SELECTIVE GOLD (Au) ON CONTACT AREA, SELECTIVE MATTE TIN (Sn) ON PCB TAILS, NICKEL (Ni) OVERALL.
 3. THIS PART CONFORMS TO MOLEX PRODUCT SPECIFICATION PS-75221-999.
 4. FOR MIXED CONTACT MATING LENGTHS CONSULT MOLEX FOR AVAILABILITY. CONTACT PAIRS MUST BE THE SAME LENGTH.
 5. FOR SPECIFIC PART NUMBER AND MATING INFORMATION PLEASE REFER TO CHART.
 6. PACKAGE PER PK-70873-963.
 7. MARK PART NUMBER AND DATE CODE APPROXIMATELY WHERE SHOWN.
 8. OPTIONAL HOLE LOCATION FOR GROUNDED GUIDE PIN OR ADDITIONAL GUIDE PIN SUPPORT. FOR GROUNDED GUIDE PIN, HOLE TO BE PLATED, DRILL SIZE #258, PAD SIZE #650.
 9. THIS PART CONFORMS TO MOLEX COSMETIC SPECIFICATION PS-45499-002 CLASS B.
 10. MAPS (MOLEX ADVANCED PLATING SYSTEM)

THE PRIMARY CARTON WITH A LABEL STATING 'ELV AND RoHS COMPLIANT' IS LEAD FREE. CARTONS WITHOUT THIS LABEL MAY CONTAIN LEAD.

| MODULE ORIENTATION | PIN LENGTH DIM "M" | GOLD (Au) THICKNESS micrometers |
|--------------------|--------------------|---------------------------------|
| LEFT = 2 | 0-3.55 mm | 0.25 (MAPS) |
| | 1-4.55 mm | |
| | 2-5.55 mm | |
| | 3-3.55 mm | 0.76 |
| | 4-4.55 mm | |
| RIGHT = 7 | 5-5.55 mm | |
| | 6-4.55 mm | 1.27 |
| | 9-5.55 mm | |

| PIN 75235-() | -270° | -271° | -272° | -273° | -274° | -275° | -276° | -277° | -278° |
|------------------------|-------|-------|-------|-------|-------|-------|-------|-------|-------|
| KEYING PIN ORIENTATION | | | | | | | | | |

| QUALITY SYMBOLS | GENERAL TOLERANCES (UNLESS SPECIFIED) | | DIMENSION STYLE | | SCALE | DESIGN UNITS | THIRD ANGLE PROJECTION |
|---|---------------------------------------|------|-----------------|------------------------|--------------|---------------------------|--|
| | MM | INCH | MM ONLY | INCH ONLY | | | |
| ▽=0 | 4 PLACES ± | --- | DRAWN BY | DATE | 5:1 | METRIC | GBX 4-PAIR BACKPLANE LF 7-COLUMN LEFT END SALES ASSEMBLY DRAWING |
| ▽=0 | 3 PLACES ± | --- | J BINGHAM | 2006/11/30 | | | |
| ▽=0 | 2 PLACES ± | 0.25 | CHECKED BY | DATE | | | |
| ▽=0 | 1 PLACE ± | 0.38 | SREED | 2006/11/30 | | | |
| ▽=0 | 0 PLACE ± | --- | APPROVED BY | DATE | molex | | |
| ▽=0 | 0 PLACE ± | --- | SMILLER | 2012/12/05 | | | |
| DRAFT WHERE APPLICABLE MUST REMAIN WITHIN DIMENSIONS | | | | MATERIAL NO. SEE CHART | | DOCUMENT NO. SD-75235-270 | |
| ANGULAR ±1/2° | | | | SEE CHART | | SHEET NO. 1 OF 1 | |
| THIS DRAWING CONTAINS INFORMATION THAT IS PROPRIETARY TO MOLEX INCORPORATED AND SHOULD NOT BE USED WITHOUT WRITTEN PERMISSION | | | | | | | |