

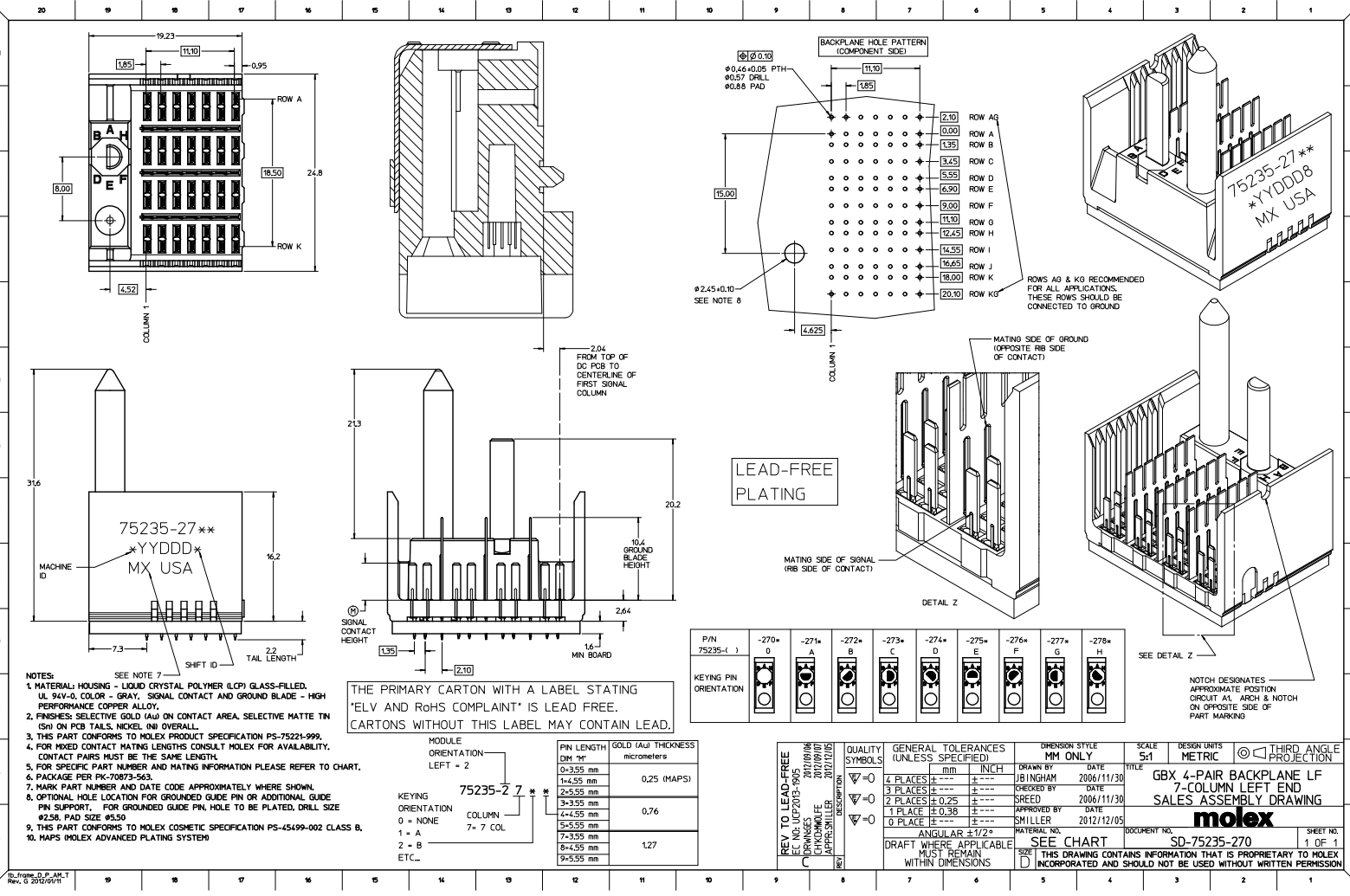
Excellent Integrated System Limited

Stocking Distributor

Click to view price, real time Inventory, Delivery & Lifecycle Information:

[Molex Connector Corporation](#)
[0752352789](#)

For any questions, you can email us directly:
sales@integrated-circuit.com



- NOTES:**
1. MATERIAL: HOUSING - LIQUID CRYSTAL POLYMER (LCP) GLASS-FILLED, UL 94V-0, COLOR - GRAY, SIGNAL CONTACT AND GROUND BLADE - HIGH PERFORMANCE COPPER ALLOY.
 2. FINISHES: SELECTIVE GOLD (Au) ON CONTACT AREA, SELECTIVE MATTE TIN (Sn) ON PCB TAILS, NICKEL (Ni) OVERALL.
 3. THIS PART CONFORMS TO MOLEX PRODUCT SPECIFICATION PS-75221-999.
 4. FOR MIXED CONTACT MATING LENGTHS CONSULT MOLEX FOR AVAILABILITY. CONTACT PAIRS MUST BE THE SAME LENGTH.
 5. FOR SPECIFIC PART NUMBER AND MATING INFORMATION PLEASE REFER TO CHART.
 6. PACKAGE PER PK-70873-963.
 7. MARK PART NUMBER AND DATE CODE APPROXIMATELY WHERE SHOWN.
 8. OPTIONAL HOLE LOCATION FOR GROUNDED GUIDE PIN OR ADDITIONAL GUIDE PIN SUPPORT. FOR GROUNDED GUIDE PIN, HOLE TO BE PLATED, DRILL SIZE #258, PAD SIZE #650.
 9. THIS PART CONFORMS TO MOLEX COSMETIC SPECIFICATION PS-45499-002 CLASS B.
 10. MAPS (MOLEX ADVANCED PLATING SYSTEM)

THE PRIMARY CARTON WITH A LABEL STATING 'ELV AND RoHS COMPLIANT*' IS LEAD FREE. CARTONS WITHOUT THIS LABEL MAY CONTAIN LEAD.

MODULE ORIENTATION	PIN LENGTH DIM "M"	GOLD (Au) THICKNESS micrometers
LEFT = 2	0-3.55 mm	0.25 (MAPS)
	1-4.55 mm	
	2-5.55 mm	0.76
	3-3.55 mm	
	4-4.55 mm	
RIGHT = 1	5-5.55 mm	1.27
	6-4.55 mm	
	9-5.55 mm	

PIN ORIENTATION	-270*	-271*	-272*	-273*	-274*	-275*	-276*	-277*	-278*
KEYING PIN ORIENTATION									

QUALITY SYMBOLS	GENERAL TOLERANCES (UNLESS SPECIFIED)	DIMENSION STYLE	SCALE	DESIGN UNITS	THIRD ANGLE PROJECTION
$\nabla=0$	4 PLACES \pm mm	MM ONLY	5:1	METRIC	
$\nabla=0.25$	3 PLACES \pm mm				
$\nabla=0.38$	2 PLACES \pm mm				
$\nabla=0$	1 PLACE \pm mm				
$\nabla=0$	0 PLACES \pm mm				
	ANGULAR $\pm 1/2^\circ$				
	DRAFT WHERE APPLICABLE MUST REMAIN WITHIN DIMENSIONS				

DRAWN BY	DATE	TITLE	DOCUMENT NO.	SHEET NO.
J. BINGHAM	2006/11/30	GBX 4-PAIR BACKPLANE LF 7-COLUMN LEFT END SALES ASSEMBLY DRAWING	SD-75235-270	1 OF 1