

Excellent Integrated System Limited

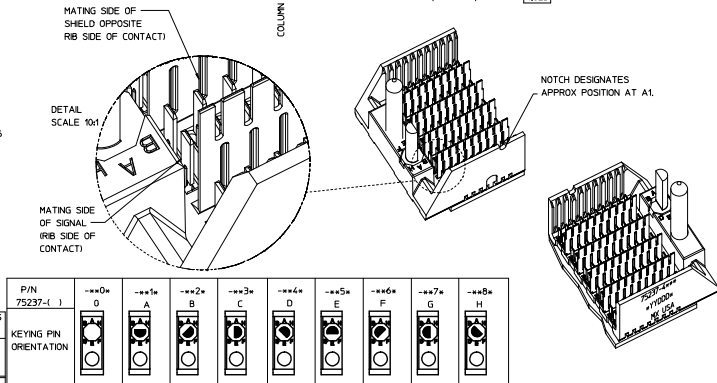
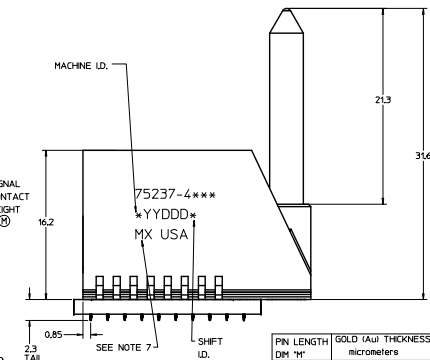
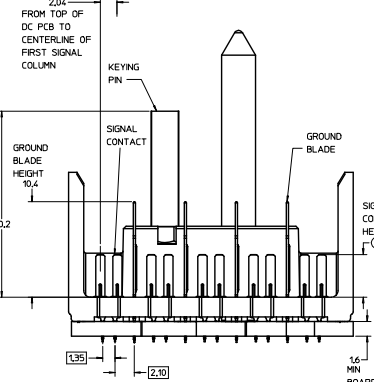
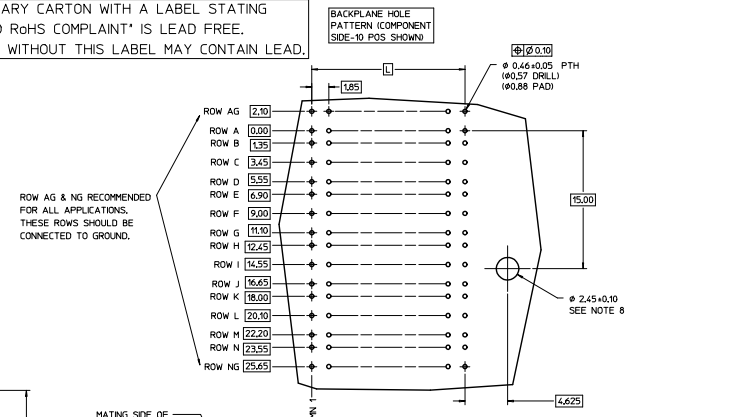
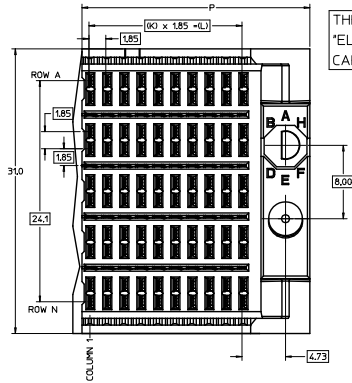
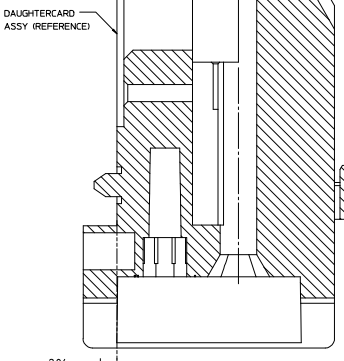
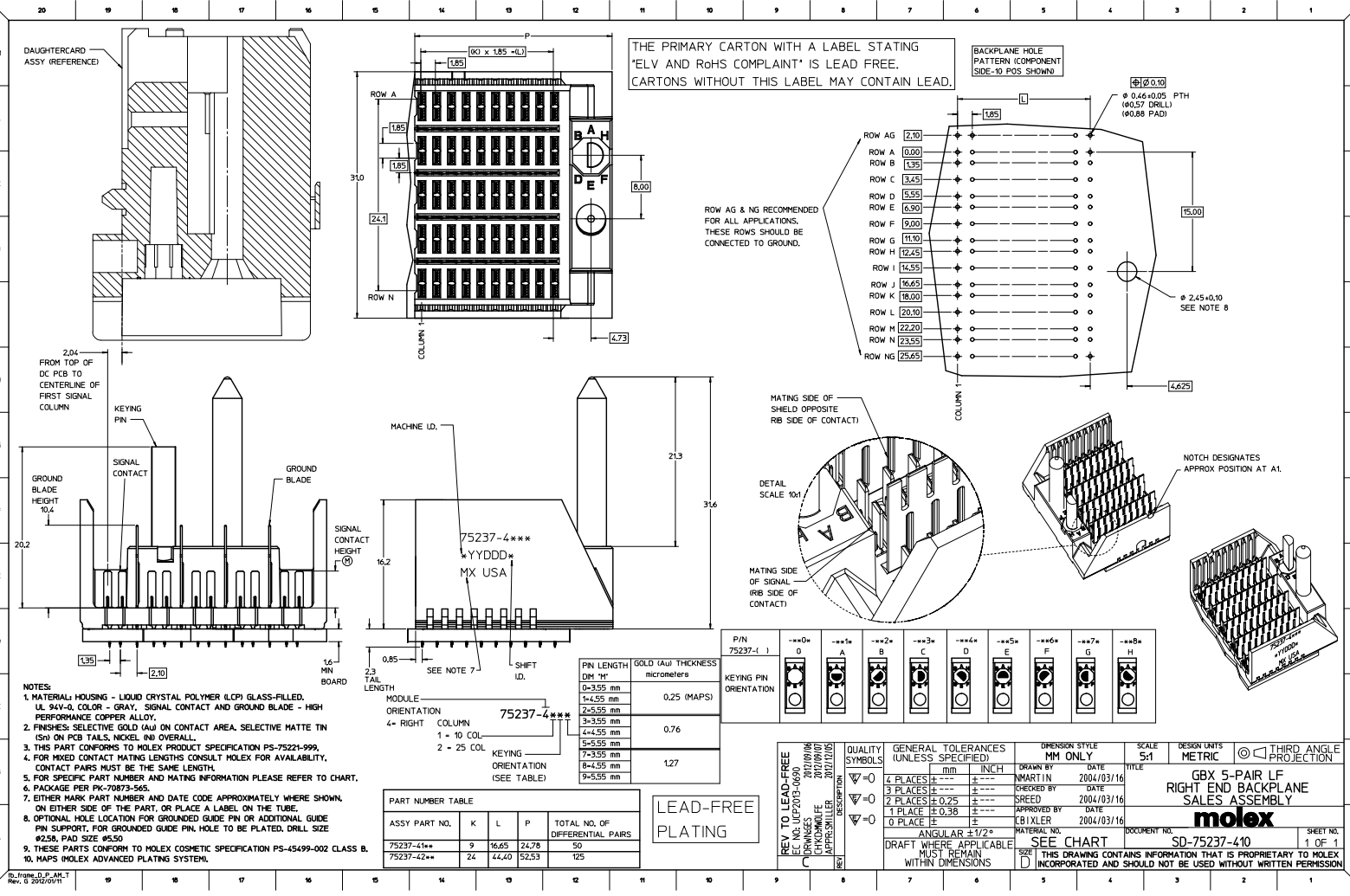
Stocking Distributor

Click to view price, real time Inventory, Delivery & Lifecycle Information:

[Molex Connector Corporation](#)
[0752374145](#)

For any questions, you can email us directly:

sales@integrated-circuit.com



NOTES:

1. MATERIAL: HOUSING - LIQUID CRYSTAL POLYMER (LCP) GLASS-FILLED, UL 94V-0, COLOR - GRAY, SIGNAL CONTACT AND GROUND BLADE - HIGH PERFORMANCE COPPER ALLOY.
2. FINISHES: SELECTIVE GOLD (Au) ON CONTACT AREA, SELECTIVE MATTE TIN (Sn) ON PCB TAILS, NICKEL (Ni) OVERALL.
3. THIS PART CONFORMS TO MOLEX PRODUCT SPECIFICATION PS-75221-999.
4. FOR MIXED CONTACT MATING LENGTHS CONSULT MOLEX FOR AVAILABILITY, CONTACT PAIRS MUST BE THE SAME LENGTH.
5. FOR SPECIFIC PART NUMBER AND MATING INFORMATION PLEASE REFER TO CHART.
6. PACKAGE PER PK-70873-565.
7. EITHER MARK PART NUMBER AND DATE CODE APPROXIMATELY WHERE SHOWN, ON EITHER SIDE OF THE PART, OR PLACE A LABEL ON THE TUBE.
8. OPTIONAL HOLE LOCATION FOR GROUNDED GUIDE PIN OR ADDITIONAL GUIDE PIN SUPPORT, FOR GROUNDED GUIDE PIN HOLE TO BE PLATED, DRILL SIZE Ø25H, PAD SIZE Ø55H.
9. THESE PARTS CONFORM TO MOLEX COSMETIC SPECIFICATION PS-45499-002 CLASS B.
10. MAPS (MOLEX ADVANCED PLATING SYSTEM).

P/N	75237-4	1
KEYING PIN ORIENTATION	0	1
	2	3
	4	5
	6	7
	8	9
	10	11
	12	13
	14	15
	16	17
	18	19
	20	21
	22	23
	24	25

PIN LENGTH DIM #1	GOLD (Au) THICKNESS micrometers
0-4.55 mm	0.25 (MAPS)
4.55-5.55 mm	0.76
5.55-7.35 mm	1.27
7.35-8.45 mm	
8.45-9.55 mm	

PART NUMBER TABLE			
ASSY PART NO.	K	L	P
75237-41**	9	16.65	24.78
75237-42**	24	44.40	52.53
			TOTAL NO. OF DIFFERENTIAL PAIRS
			50
			125

QUALITY SYMBOLS	GENERAL TOLERANCES (UNLESS SPECIFIED)	DIMENSION STYLE	SCALE	DESIGN UNITS	THIRD ANGLE PROJECTION
∇=0	4 PLACES ±0.10	MM ONLY	5:1	METRIC	THIRD ANGLE PROJECTION
∇=0	3 PLACES ±0.25				
∇=0	2 PLACES ±0.38				
∇=0	1 PLACE ±0.50				
	ANGULAR ±1/2°				
	DRAFT WHERE APPLICABLE MUST REMAIN WITHIN DIMENSIONS				

REV TO LEAD-FREE	DATE	BY	APPROVAL
REV 1	2007/09/06	2007/09/07	2007/07/05
REV 2	2007/09/06	2007/09/07	2007/07/05
REV 3	2007/09/06	2007/09/07	2007/07/05

DATE	BY	APPROVAL	DESCRIPTION
2004/03/16	MARTIN	2004/03/16	DATE
2004/03/16	SREED	2004/03/16	DATE
2004/03/16	OBILIER	2004/03/16	DATE

DOCUMENT NO.	TITLE	SHEET NO.
SD-75237-410	GBX 5-PAIR LF RIGHT END BACKPLANE SALES ASSEMBLY	1 OF 1

MOLEX
SEE CHART
THIS DRAWING CONTAINS INFORMATION THAT IS PROPRIETARY TO MOLEX AND SHOULD NOT BE USED WITHOUT WRITTEN PERMISSION