

Excellent Integrated System Limited

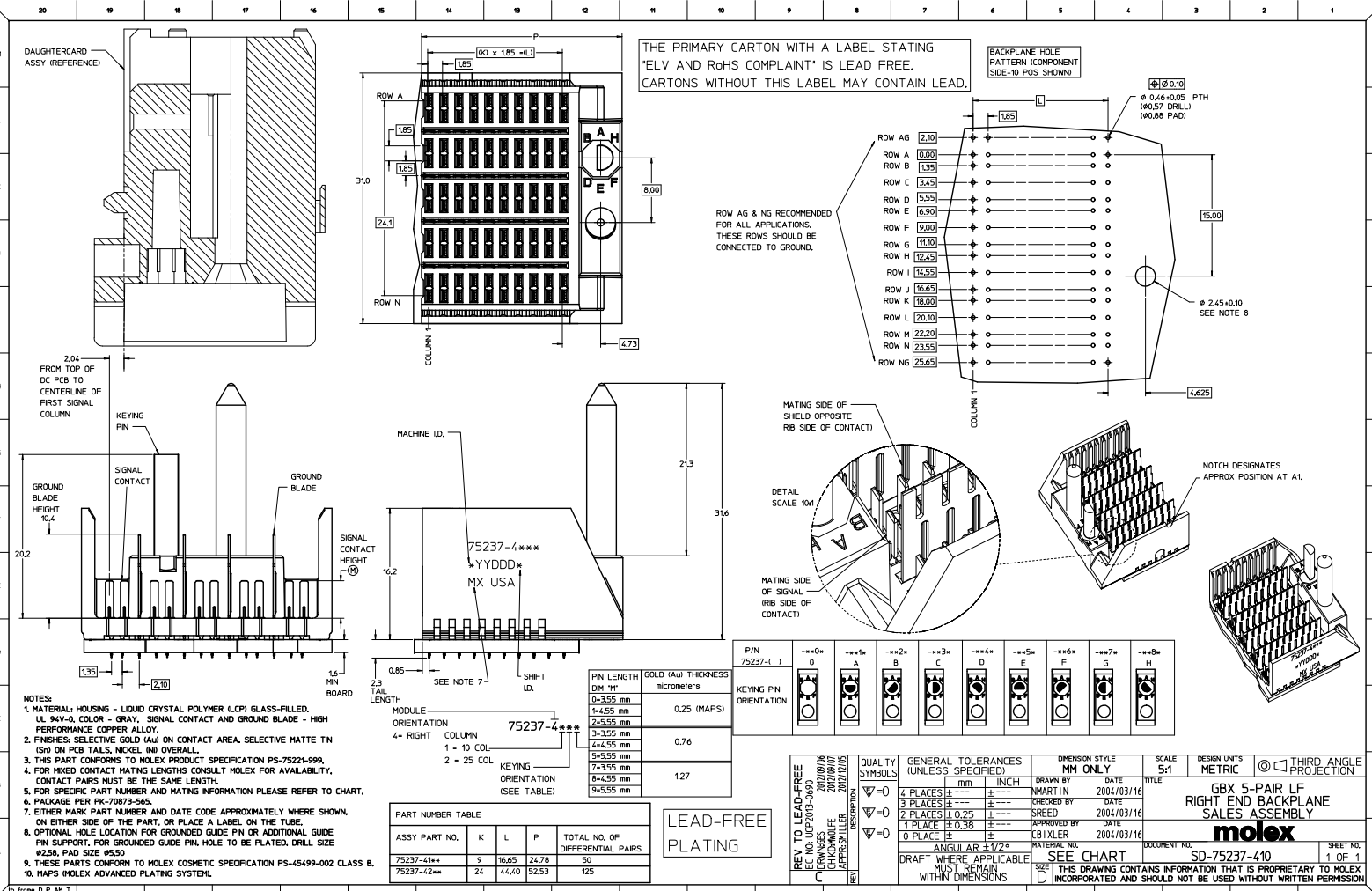
Stocking Distributor

Click to view price, real time Inventory, Delivery & Lifecycle Information:

[Molex Connector Corporation](#)
[0752374175](#)

For any questions, you can email us directly:

sales@integrated-circuit.com



- NOTES:**
- MATERIAL: HOUSING - LIQUID CRYSTAL POLYMER (LCP) GLASS-FILLED, UL 94V-0, COLOR - GRAY, SIGNAL CONTACT AND GROUND BLADE - HIGH PERFORMANCE COPPER ALLOY.
 - FINISHES: SELECTIVE GOLD (Au) ON CONTACT AREA, SELECTIVE MATTE TIN (Sn) ON PCB TAILS, NICKEL (Ni) OVERALL.
 - THIS PART CONFORMS TO MOLEX PRODUCT SPECIFICATION PS-75221-999.
 - FOR MIXED CONTACT MATING LENGTHS CONSULT MOLEX FOR AVAILABILITY, CONTACT PAIRS MUST BE THE SAME LENGTH.
 - FOR SPECIFIC PART NUMBER AND MATING INFORMATION PLEASE REFER TO CHART.
 - PACKAGE PER PK-70873-565.
 - EITHER MARK PART NUMBER AND DATE CODE APPROXIMATELY WHERE SHOWN, ON EITHER SIDE OF THE PART, OR PLACE A LABEL ON THE TUBE.
 - OPTIONAL HOLE LOCATION FOR GROUNDED GUIDE PIN OR ADDITIONAL GUIDE PIN SUPPORT, FOR GROUNDED GUIDE PIN HOLE TO BE PLATED, DRILL SIZE #258, PAD SIZE #550.
 - THESE PARTS CONFORM TO MOLEX COSMETIC SPECIFICATION PS-45499-002 CLASS B.
 - HAPS (MOLEX ADVANCED PLATING SYSTEM).

P/N	75237-4	1
KEYING PIN ORIENTATION	0	1
	2	3
	4	5
	6	7
	8	9
	10	11
	12	13
	14	15
	16	17
	18	19
	20	21

PART NUMBER TABLE	
ASSY PART NO.	TOTAL NO. OF DIFFERENTIAL PAIRS
75237-41**	50
75237-42**	125

LEAD-FREE PLATING

REV TO LEAD-FREE EC NO. UFP2013-0690 DRAWINGS: 2012/09/06 CHECKED: 2012/09/07 APPROVED: 2012/07/05 PREPARED: 2012/07/05	QUALITY SYMBOLS ∇=0 ∇=0 ∇=0	GENERAL TOLERANCES (UNLESS SPECIFIED) 4 PLACES ±0.25 3 PLACES ±0.25 2 PLACES ±0.25 1 PLACE ±0.38 ANGULAR ±1/2°	MM ONLY DRAWN BY: NMARTIN CHECKED BY: SREED APPROVED BY: CBIXLER DATE: 2004/03/16 DATE: 2004/03/16 DATE: 2004/03/16	SCALE: 5:1 DESIGN UNITS: METRIC THIRD ANGLE PROJECTION	GBX 5-PAIR LF RIGHT END BACKPLANE SALES ASSEMBLY molex	DOCUMENT NO: SD-75237-410 SHEET NO: 1 OF 1