

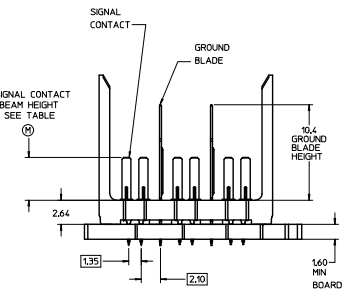
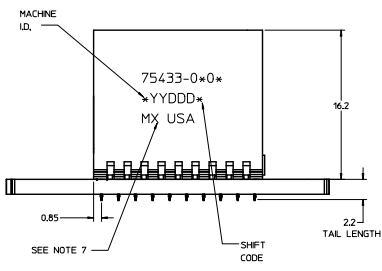
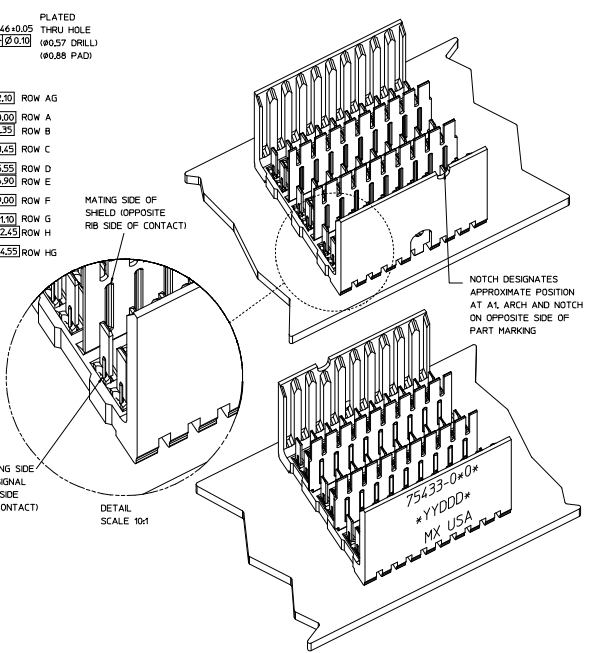
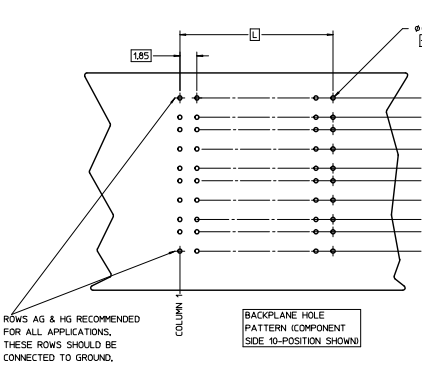
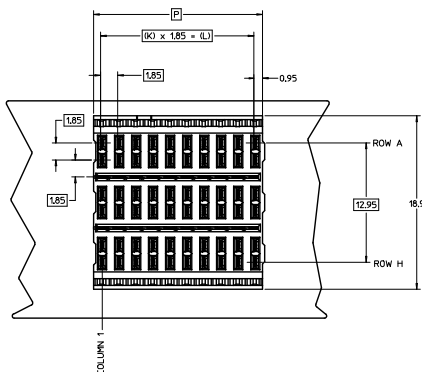
Excellent Integrated System Limited

Stocking Distributor

Click to view price, real time Inventory, Delivery & Lifecycle Information:

[Molex Connector Corporation](#)
[0754330503](#)

For any questions, you can email us directly:
sales@integrated-circuit.com



- NOTES:**
1. MATERIAL: HOUSING - LIQUID CRYSTAL POLYMER (LCP) GLASS-FILLED, UL 94V-0, COLOR - GRAY, SIGNAL CONTACT AND GROUND BLADE - HIGH PERFORMANCE COPPER ALLOY.
 2. FINISHES: SELECTIVE GOLD (Au) ON CONTACT AREA, SELECTIVE MATTE TIN (Sn) ON PCB TAILS, NICKEL (Ni) OVERALL.
 3. THIS PART CONFORMS TO MOLEX PRODUCT SPECIFICATION PS-75221-999, CONTACT PAIRS MUST BE THE SAME LENGTH.
 4. FOR FIXED CONTACT MATING LENGTHS CONSULT MOLEX FOR AVAILABILITY.
 5. FOR SPECIFIC PART NUMBER AND MATING INFORMATION PLEASE REFER TO CHART.
 6. PACKAGE PER PK-70873-576.
 7. EITHER MARK PART NUMBER AND DATE CODE APPROXIMATELY WHERE SHOWN OR PLACE A LABEL ON THE TUBE.
 8. MAPS (ADVANCED PLATING SYSTEM).

COLUMN	KEYING	ORIENTATION	OPEN = 0 (NONE)
01 - 10 COL			
02 - 25 COL			
05 - 5 COL			

PIN LENGTH DIM "M"	GOLD (Au) THICKNESS micrometers
0-3.55 mm	0.25 (MAPS)
1-4.55 mm	
2-5.55 mm	0.76
3-6.55 mm	
4-7.55 mm	1.27
5-8.55 mm	
6-9.55 mm	

ASSY PART NO.	K	L	P	TOTAL NO. OF DIFFERENTIAL PAIRS
75433-010*	9	16.65	18.35	30
75433-020*	24	44.40	46.10	75
75433-050*	6	7.40	9.10	15

LEAD-FREE
PLATING

THE PRIMARY CARTON WITH A LABEL STATING "ELV AND RoHS COMPLIANT" IS LEAD FREE. CARTONS WITHOUT THIS LABEL MAY CONTAIN LEAD.

REV TO LEAD-FREE EC NO. 1472013-9005 DRAWINGS: 2010/09/07 CHECKED: 2010/09/07 APPROVED: 2010/10/05 PREPARED: 2010/09/07	QUALITY SYMBOLS 4 PLACES ±0 3 PLACES ±0 2 PLACES ±0 1 PLACE ±0 0 PLACE ±0	GENERAL TOLERANCES (UNLESS SPECIFIED) mm INCH ±0.25 ±0.010 ±0.38 ±0.015 ±0.50 ±0.020 ±0.75 ±0.030 ±1.00 ±0.040 ±1.50 ±0.060 ±2.00 ±0.080 ±3.00 ±0.120 ±4.00 ±0.160 ±5.00 ±0.200 ±6.00 ±0.240 ±8.00 ±0.320 ±10.00 ±0.400 ±15.00 ±0.600 ±20.00 ±0.800 ±30.00 ±1.200 ±40.00 ±1.600 ±50.00 ±2.000 ±60.00 ±2.400 ±80.00 ±3.200 ±100.00 ±4.000 ANGULAR ±1/2° DRAFT WHERE APPLICABLE MUST REMAIN WITHIN DIMENSIONS	DIMENSION STYLE MM ONLY	SCALE 5:1	DESIGN UNITS METRIC	THIRD ANGLE PROJECTION	
	DRAWN BY: NMARTIN CHECKED BY: SREED APPROVED BY: JL LAUR	DATE: 2004/02/09 DATE: 2004/02/09 DATE: 2009/11/24	TITLE: GBX 3-PAIR LF OPEN END BACKPLANE SALES ASSEMBLY	MATERIAL NO.: SEE CHART SIZE: THIS DRAWING CONTAINS INFORMATION THAT IS PROPRIETARY TO MOLEX INCORPORATED AND SHOULD NOT BE USED WITHOUT WRITTEN PERMISSION	DOCUMENT NO.: SD-75433-010	SHEET NO.: 1 OF 1	